

Datasheet for ABIN2855845
anti-ETS2 antibody (Center)[Go to Product page](#)

7 Images

3 Publications

Overview

Quantity:	100 µL
Target:	ETS2
Binding Specificity:	Center
Reactivity:	Human, Rat
Host:	Rabbit
Clonality:	Polyclonal
Conjugate:	This ETS2 antibody is un-conjugated
Application:	Western Blotting (WB), Immunofluorescence (IF), Immunohistochemistry (Paraffin-embedded Sections) (IHC (p)), Immunoprecipitation (IP), Immunocytochemistry (ICC), Chromatin Immunoprecipitation (ChIP)

Product Details

Immunogen:	Recombinant protein encompassing a sequence within the center region of human ETS2. The exact sequence is proprietary.
Isotype:	IgG
Characteristics:	Rabbit Polyclonal antibody to ETS2 (v-ets erythroblastosis virus E26 oncogene homolog 2 (avian)) ETS2 antibody
Purification:	Purified by antigen-affinity chromatography.

Target Details

Target:	ETS2
Alternative Name:	ETS2 (ETS2 Products)
Background:	<p>ETS transcriptions factors, such as ETS2, regulate numerous genes and are involved in stem cell development, cell senescence and death, and tumorigenesis. The conserved ETS domain within these proteins is a winged helix-turn-helix DNA-binding domain that recognizes the core consensus DNA sequence GGAA/T of target genes (Dwyer et al., 2007 [PubMed 17986575]).[supplied by OMIM]</p> <p>Cellular Localization: Nucleus</p>
Molecular Weight:	53 kDa
Gene ID:	2114
Pathways:	EGFR Signaling Pathway , Myometrial Relaxation and Contraction

Application Details

Application Notes:	<p>Suggested dilution Reference ChIP assay Assay-dependent dilution ICC/IF 1:100-1:1000* IHC (Formalin-fixed paraffin-embedded sections) 1:100-1:1000* Immunoprecipitation 1:100-1:500* Western blot 1:500-1:3000* Not tested in other applications. *Optimal dilutions/concentrations should be determined by the researcher.Suggested dilutionReferenceChIP assayAssay-dependent dilution ICC/IF1:100-1:1000* IHC (Formalin-fixed paraffin-embedded sections)1:100-1:1000* Immunoprecipitation1:100-1:500* Western blot1:500-1:3000*</p>
Comment:	Positive Control: HeLa
Restrictions:	For Research Use only

Handling

Format:	Liquid
Concentration:	1 mg/mL
Buffer:	1XPBS, 1 % BSA, 20 % Glycerol (pH 7). 0.01 % Thimerosal was added as a preservative.
Preservative:	Thimerosal (Merthiolate)
Precaution of Use:	This product contains Thimerosal (Merthiolate): a POISONOUS AND HAZARDOUS SUBSTANCE which should be handled by trained staff only.
Storage:	-20 °C

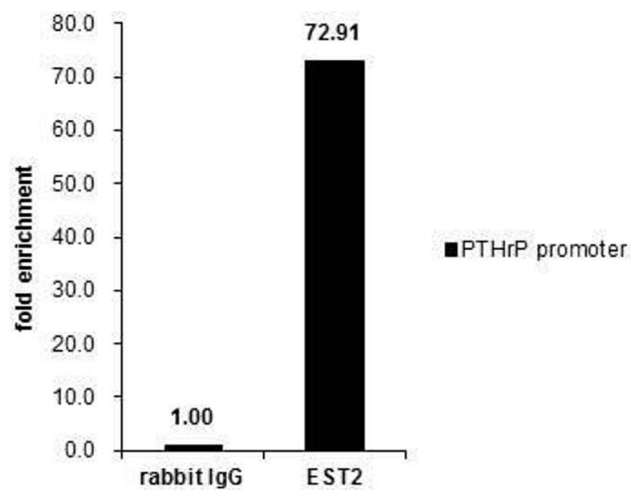
Handling

Storage Comment: Keep as concentrated solution. Aliquot and store at -20°C or below. Avoid multiple freeze-thaw cycles.

Publications

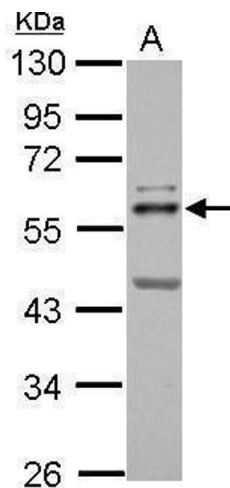
Product cited in: Salzman, Nakamura, Nallur, Dookwah, Metheetrairut, Slack, Weidhaas: "miR-34 activity is modulated through 5'-end phosphorylation in response to DNA damage." in: **Nature communications**, Vol. 7, pp. 10954, (2016) ([PubMed](#)).

Images



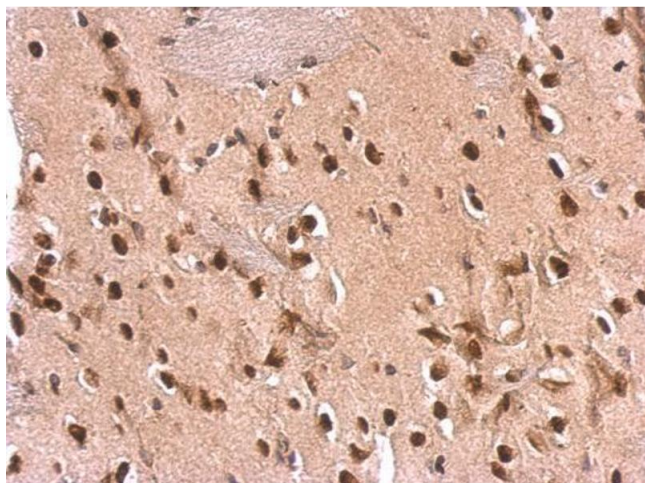
Chromatin Immunoprecipitation

Image 1. ChIP Image Cross-linked ChIP was performed with MCF-7 chromatin extract and 5 µg of either control rabbit IgG or anti-ETS2 antibody. The precipitated DNA was detected by PCR with primer set targeting to PTHrP promoter.



Western Blotting

Image 2. WB Image Sample (30 ug of whole cell lysate) A: HeLa 10% SDS PAGE antibody diluted at 1:1000



Immunohistochemistry

Image 3. IHC-P Image ETS2 antibody detects ETS2 protein at nucleus on rat fore brain by immunohistochemical analysis. Sample: Paraffin-embedded rat fore brain. ETS2 antibody , dilution: 1:500.

Please check the [product details page](#) for more images. Overall 7 images are available for ABIN2855845.