

Datasheet for ABIN2855846  
**anti-LIM Domain Binding 1 Protein antibody**

## 7 Images

[Go to Product page](#)

## Overview

Quantity:	100 µL
Target:	LIM Domain Binding 1 Protein (LDB1)
Reactivity:	Human
Host:	Rabbit
Clonality:	Polyclonal
Conjugate:	This LIM Domain Binding 1 Protein antibody is un-conjugated
Application:	Western Blotting (WB), Immunoprecipitation (IP), Immunohistochemistry (Paraffin-embedded Sections) (IHC (p)), Immunocytochemistry (ICC), Immunofluorescence (IF)

## Product Details

Immunogen:	Recombinant protein encompassing a sequence within the center region of human LDB1. The exact sequence is proprietary.
Isotype:	IgG
Cross-Reactivity:	Human, Mouse, Rat
Characteristics:	Rabbit Polyclonal antibody to LDB1 (LIM domain binding 1) LDB1 antibody [N2C3]
Purification:	Purified by antigen-affinity chromatography.
Grade:	KO Validated

## Target Details

Target:	LIM Domain Binding 1 Protein (LDB1)
---------	-------------------------------------

## Target Details

Alternative Name:	LIM domain binding 1 ( <a href="#">LDB1 Products</a> )
Background:	<p>Binds to the LIM domain of a wide variety of LIM domain-containing transcription factors. May regulate the transcriptional activity of LIM-containing proteins by determining specific partner interactions. May play a role in the development of motor neurons. Acts synergistically with LHX1/LIM1 in axis formation and activation of gene expression. Acts with LMO2 in the regulation of red blood cell development, maintaining erythroid precursors in an immature state.</p> <p>Cellular Localization: Nucleus</p>
Molecular Weight:	47 kDa
Gene ID:	8861
UniProt:	<a href="#">Q86U70</a>
Pathways:	<a href="#">Stem Cell Maintenance</a> , <a href="#">Chromatin Binding</a>

## Application Details

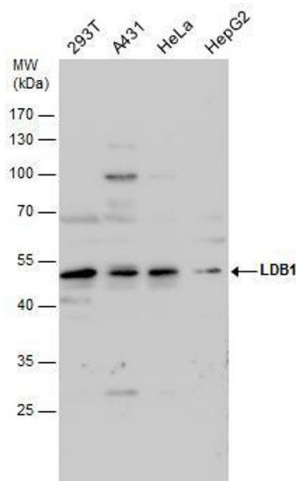
Application Notes:	WB: 1:500-1:3000. ICC/IF: 1:100-1:1000. IHC-P: 1:100-1:1000. IP: 1:100-1:500. Optimal dilutions/concentrations should be determined by the researcher. Not tested in other applications.
Comment:	<p>Positive Control: Mouse brain , HeLa</p> <p>Validation: KO/KD</p>
Restrictions:	For Research Use only

## Handling

Format:	Liquid
Concentration:	1 mg/mL
Buffer:	1XPBS ( pH 7), 20 % Glycerol, 0.025 % ProClin 300
Preservative:	ProClin
Precaution of Use:	This product contains ProClin: a POISONOUS AND HAZARDOUS SUBSTANCE which should be handled by trained staff only.
Storage:	4 °C,-20 °C

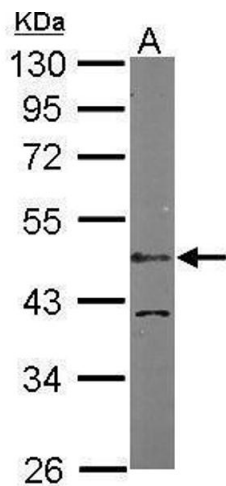
Storage Comment: Store as concentrated solution. Centrifuge briefly prior to opening vial. For short-term storage (1-2 weeks), store at 4°C. For long-term storage, aliquot and store at -20°C or below. Avoid multiple freeze-thaw cycles.

Images



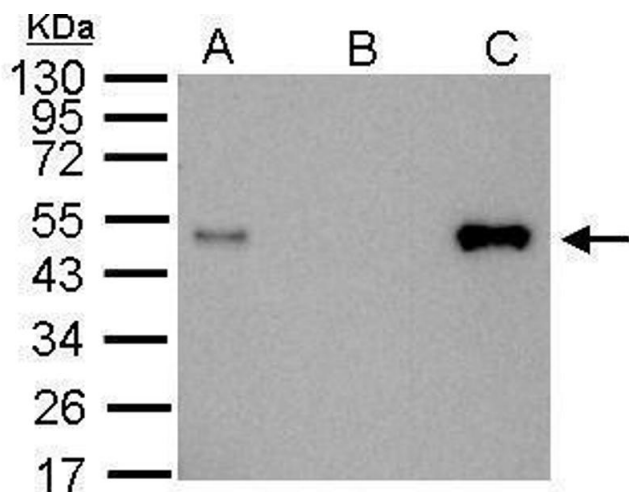
Western Blotting

**Image 1.** WB Image LDB1 antibody detects LDB1 protein by western blot analysis. Various whole cell extracts (30 µg) were separated by 10% SDS-PAGE, and the membrane was blotted with LDB1 antibody, diluted by 1:1000.



Western Blotting

**Image 2.** WB Image Sample (50 ug of whole cell lysate) A: Mouse brain 10% SDS PAGE antibody diluted at 1:1000



Immunoprecipitation

**Image 3.** IP Image LDB1 antibody immunoprecipitates LDB1 protein in IP experiments. IP Sample: 1000 µg 293T whole cell lysate/extract A. 20 µg 293T whole cell lysate/extract B. Control with 2.5 µg of preimmune rabbit IgG C. Immunoprecipitation of LDB1 protein by 2.5 µg of LDB1 antibody, 12% SDS-PAGE The immunoprecipitated LDB1 protein was detected by LDB1 antibody, diluted at 1:1000. EasyBlot anti-rabbit IgG was used as a secondary reagent.

Please check the [product details page](#) for more images. Overall 7 images are available for ABIN2855846.