

Datasheet for ABIN2855847  
**anti-Splicing Factor 1 antibody**[Go to Product page](#)

## 2 Images

## Overview

Quantity:	100 µL
Target:	Splicing Factor 1 (SF1)
Reactivity:	Human
Host:	Rabbit
Clonality:	Polyclonal
Conjugate:	This Splicing Factor 1 antibody is un-conjugated
Application:	Western Blotting (WB), Immunofluorescence (IF), Immunoprecipitation (IP), Immunocytochemistry (ICC)

## Product Details

Immunogen:	Recombinant protein encompassing a sequence within the center region of human splicing factor 1. The exact sequence is proprietary.
Isotype:	IgG
Specificity:	Knockdown/Knockout validation was supported by references (PMID:26990993)
Cross-Reactivity:	Human
Characteristics:	Rabbit polyclonal antibody to Splicing factor 1 (splicing factor 1) splicing factor 1 antibody [N1N3]
Purification:	Purified by antigen-affinity chromatography.
Grade:	KO Validated

## Target Details

Target:	Splicing Factor 1 (SF1)
Alternative Name:	splicing factor 1 ( <a href="#">SF1 Products</a> )
Background:	<p>This gene encodes a nuclear pre-mRNA splicing factor. The encoded protein specifically recognizes the intron branch point sequence and is required for the early stages of spliceosome assembly. Alternate splicing results in multiple transcript variants.</p> <p>Cellular Localization: Nucleus</p>
Molecular Weight:	68 kDa
Gene ID:	7536
UniProt:	<a href="#">Q15637</a>
Pathways:	<a href="#">Nuclear Receptor Transcription Pathway</a> , <a href="#">Steroid Hormone Mediated Signaling Pathway</a> , <a href="#">Ribonucleoprotein Complex Subunit Organization</a> , <a href="#">Maintenance of Protein Location</a>

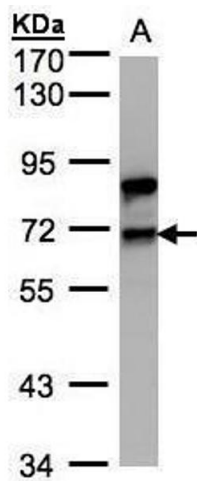
## Application Details

Application Notes:	WB: 1:500-1:3000. ICC/IF: 1:100-1:1000. Optimal dilutions/concentrations should be determined by the researcher. Not tested in other applications.
Comment:	<p>Positive Control: Raji</p> <p>Validation: KO/KD</p>
Restrictions:	For Research Use only

## Handling

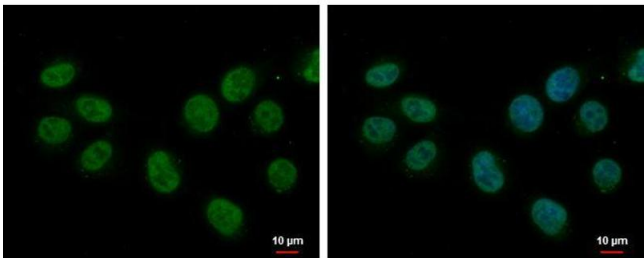
Format:	Liquid
Concentration:	0.77 mg/mL
Buffer:	0.1M Tris-Glycine ( pH 7), 10 % Glycerol, 0.01 % Thimerosal
Preservative:	Thimerosal (Merthiolate)
Precaution of Use:	This product contains Thimerosal (Merthiolate): a POISONOUS AND HAZARDOUS SUBSTANCE which should be handled by trained staff only.
Storage:	4 °C,-20 °C
Storage Comment:	Store as concentrated solution. Centrifuge briefly prior to opening vial. For short-term storage (1-2 weeks), store at 4°C. For long-term storage, aliquot and store at -20°C or below. Avoid

multiple freeze-thaw cycles.



Western Blotting

**Image 1.** WB Image Sample(30 ug whole cell lysate) A:Raji , 7.5% SDS PAGE antibody diluted at 1:1000



Immunofluorescence

**Image 2.** ICC/IF Image splicing factor 1 antibody [N1N3] detects splicing factor 1 protein at nucleus by immunofluorescent analysis. Sample: A375 cells were fixed in 4% paraformaldehyde at RT for 15 min. Green: splicing factor 1 protein stained by splicing factor 1 antibody [N1N3] , diluted at 1:500. Blue: Hoechst 33342 staining.