

Datasheet for ABIN2855852
anti-ANGPTL3 antibody[Go to Product page](#)

2 Images

Overview

Quantity:	100 µL
Target:	ANGPTL3
Reactivity:	Human
Host:	Rabbit
Clonality:	Polyclonal
Conjugate:	This ANGPTL3 antibody is un-conjugated
Application:	Western Blotting (WB), Immunohistochemistry (Paraffin-embedded Sections) (IHC (p))

Product Details

Immunogen:	Recombinant protein encompassing a sequence within the center region of human ANGPTL3. The exact sequence is proprietary.
Isotype:	IgG
Cross-Reactivity:	Human
Characteristics:	Rabbit Polyclonal antibody to ANGPTL3 (angiopoietin-like 3) ANGPTL3 antibody
Purification:	Purified by antigen-affinity chromatography.

Target Details

Target:	ANGPTL3
Alternative Name:	angiopoietin like 3 (ANGPTL3 Products)

Target Details

Background: The protein encoded by this gene is a member of the angiopoietin-like family of secreted factors. It is predominantly expressed in the liver, and has the characteristic structure of angiopoietins, consisting of a signal peptide, N-terminal coiled-coil domain and the C-terminal fibrinogen (FBN)-like domain. The FBN-like domain in angiopoietin-like 3 protein was shown to bind alpha-5/beta-3 integrins, and this binding induced endothelial cell adhesion and migration. This protein may also play a role in the regulation of angiogenesis.

Cellular Localization: Secreted

Molecular Weight: 54 kDa

Gene ID: 27329

UniProt: [Q9Y5C1](#)

Application Details

Application Notes: WB: 1:500-1:3000. IHC-P: 1:100-1:1000. Optimal dilutions/concentrations should be determined by the researcher. Not tested in other applications.

Restrictions: For Research Use only

Handling

Format: Liquid

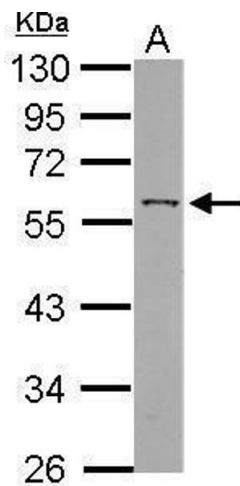
Concentration: 1.4 mg/mL

Buffer: PBS, No Preservative

Preservative: Without preservative

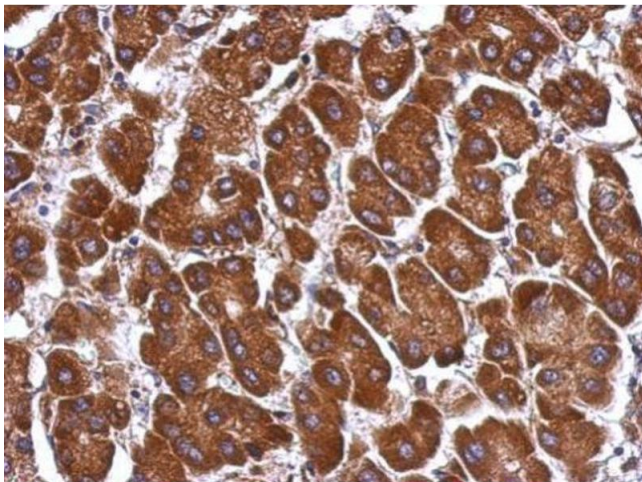
Storage: 4 °C, -20 °C

Storage Comment: Store as concentrated solution. Centrifuge briefly prior to opening vial. For short-term storage (1-2 weeks), store at 4°C. For long-term storage, aliquot and store at -20°C or below. Avoid multiple freeze-thaw cycles.



Western Blotting

Image 1. WB Image Sample (30 ug of whole cell lysate) A: HepG2 10% SDS PAGE antibody diluted at 1:1000



Immunohistochemistry

Image 2. IHC-P Image Immunohistochemical analysis of paraffin-embedded human hepatoma, using ANGPTL3, antibody at 1:500 dilution.