



Datasheet for ABIN2855854
anti-MMP2 antibody



[Go to Product page](#)

8 Images

9 Publications

Overview

Quantity:	100 µL
Target:	MMP2
Reactivity:	Human
Host:	Rabbit
Clonality:	Polyclonal
Conjugate:	This MMP2 antibody is un-conjugated
Application:	Western Blotting (WB), Immunofluorescence (IF), Immunoprecipitation (IP), Immunohistochemistry (Paraffin-embedded Sections) (IHC (p)), Immunocytochemistry (ICC), Immunohistochemistry (Frozen Sections) (IHC (fro))

Product Details

Immunogen:	Recombinant protein encompassing a sequence within the center region of human MMP2. The exact sequence is proprietary.
Isotype:	IgG
Cross-Reactivity:	Human, Mouse, Pig, Rat
Characteristics:	Rabbit Polyclonal antibody to MMP2 (matrix metalloproteinase 2 (gelatinase A, 72 kDa gelatinase, 72 kDa type IV collagenase)) MMP2 antibody
Purification:	Purified by antigen-affinity chromatography.

Target Details

Target:	MMP2
Alternative Name:	matrix metalloproteinase 2 (MMP2 Products)
Background:	<p>Proteins of the matrix metalloproteinase (MMP) family are involved in the breakdown of extracellular matrix in normal physiological processes, such as embryonic development, reproduction, and tissue remodeling, as well as in disease processes, such as arthritis and metastasis. Most MMP's are secreted as inactive proproteins which are activated when cleaved by extracellular proteinases. This gene encodes an enzyme which degrades type IV collagen, the major structural component of basement membranes. The enzyme plays a role in endometrial menstrual breakdown, regulation of vascularization and the inflammatory response. Mutations in this gene have been associated with Winchester syndrome and Nodulosis-Arthropathy-Osteolysis (NAO) syndrome. Two transcript variants encoding different isoforms have been found for this gene.</p> <p>Cellular Localization: Secreted , extracellular space , extracellular matrix</p>
Molecular Weight:	74 kDa
Gene ID:	4313
UniProt:	P08253
Pathways:	Activation of Innate immune Response

Application Details

Application Notes:	WB: 1:500-1:3000. ICC/IF: 1:100-1:1000. IHC-P: 1:100-1:1000. IP: 1:100-1:500. Optimal dilutions/concentrations should be determined by the researcher. Not tested in other applications.
Comment:	Validation: Orthogonal
Restrictions:	For Research Use only

Handling

Format:	Liquid
Concentration:	0.4 mg/mL
Buffer:	1XPBS pH 7, 1 % BSA, 20 % Glycerol, 0.025 % ProClin 300
Preservative:	ProClin

Handling

Precaution of Use: This product contains ProClin: a POISONOUS AND HAZARDOUS SUBSTANCE which should be handled by trained staff only.

Storage: 4 °C, -20 °C

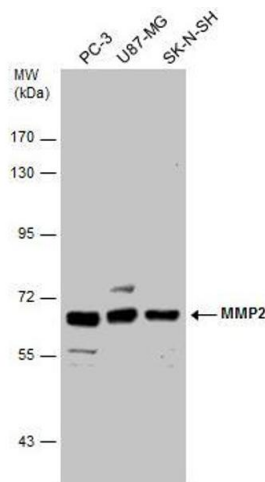
Storage Comment: Store as concentrated solution. Centrifuge briefly prior to opening vial. For short-term storage (1-2 weeks), store at 4°C. For long-term storage, aliquot and store at -20°C or below. Avoid multiple freeze-thaw cycles.

Publications

Product cited in: Alfonso-Pérez, Hayward, Holder, Gruneberg, Barr: "MAD1-dependent recruitment of CDK1-CCNB1 to kinetochores promotes spindle checkpoint signaling." in: **The Journal of cell biology**, Vol. 218, Issue 4, pp. 1108-1117, (2020) ([PubMed](#)).

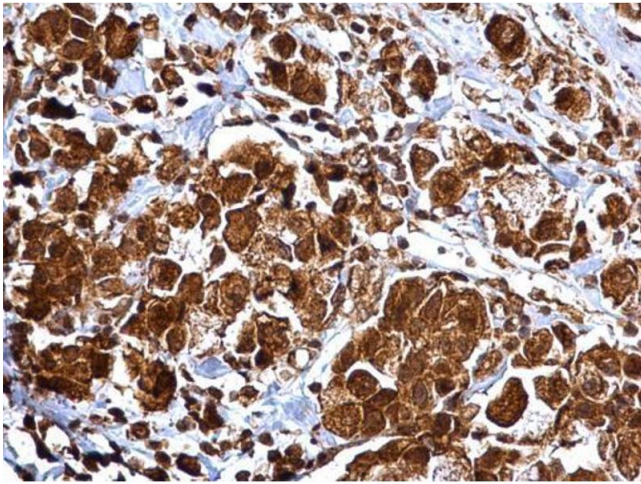
There are more publications referencing this product on: [Product page](#)

Images



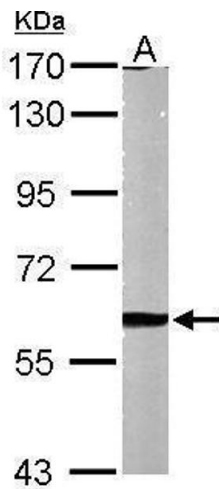
Western Blotting

Image 1. WB Image MMP2 antibody detects MMP2 protein by western blot analysis. Various whole cell extracts (30 µg) were separated by 7.5% SDS-PAGE, and the membrane was blotted with MMP2 antibody, diluted by 1:3000.



Immunohistochemistry

Image 2. IHC-P Image MMP2 antibody detects MMP2 protein at cytosol and nucleus on human breast carcinoma by immunohistochemical analysis. Sample: Paraffin-embedded human breast carcinoma. MMP2 antibody , dilution: 1:500.



Western Blotting

Image 3. WB Image Sample (50 ug of whole cell lysate) A: Mouse brain 7.5% SDS PAGE antibody diluted at 1:1000

Please check the [product details page](#) for more images. Overall 8 images are available for ABIN2855854.