



Datasheet for ABIN2855857  
**anti-Dystrobrevin beta antibody**



[Go to Product page](#)

2 Images

Overview

Quantity:	100 µL
Target:	Dystrobrevin beta (DTNB)
Reactivity:	Human
Host:	Rabbit
Clonality:	Polyclonal
Conjugate:	This Dystrobrevin beta antibody is un-conjugated
Application:	Western Blotting (WB), Immunohistochemistry (Paraffin-embedded Sections) (IHC (p))

Product Details

Immunogen:	Recombinant protein encompassing a sequence within the center region of human Dystrobrevin beta. The exact sequence is proprietary.
Isotype:	IgG
Cross-Reactivity:	Human, Mouse
Characteristics:	Rabbit Polyclonal antibody to Dystrobrevin beta (dystrobrevin, beta) Dystrobrevin beta antibody
Purification:	Purified by antigen-affinity chromatography.

Target Details

Target:	Dystrobrevin beta (DTNB)
Alternative Name:	dystrobrevin beta ( <a href="#">DTNB Products</a> )

## Target Details

---

**Background:** This gene encodes dystrobrevin beta, a component of the dystrophin-associated protein complex (DPC). The DPC consists of dystrophin and several integral and peripheral membrane proteins, including dystroglycans, sarcoglycans, syntrophins and dystrobrevin alpha and beta. The DPC localizes to the sarcolemma and its disruption is associated with various forms of muscular dystrophy. Dystrobrevin beta is thought to interact with syntrophin and the DP71 short form of dystrophin. Alternatively spliced transcript variants encoding different isoforms have been identified.

Cellular Localization: Cytoplasm

---

**Molecular Weight:** 71 kDa

---

**Gene ID:** 1838

---

**UniProt:** [O60941](#)

## Application Details

---

**Application Notes:** WB: 1:500-1:3000. IHC-P: 1:100-1:1000. Optimal dilutions/concentrations should be determined by the researcher. Not tested in other applications.

---

**Comment:** Positive Control: Mouse muscle

---

**Restrictions:** For Research Use only

## Handling

---

**Format:** Liquid

---

**Concentration:** 0.81 mg/mL

---

**Buffer:** 1XPBS ( pH 7), 1 % BSA, 20 % Glycerol, 0.01 % Thimerosal

---

**Preservative:** Thimerosal (Merthiolate)

---

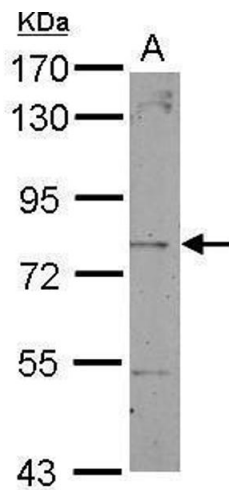
**Precaution of Use:** This product contains Thimerosal (Merthiolate): a POISONOUS AND HAZARDOUS SUBSTANCE which should be handled by trained staff only.

---

**Storage:** 4 °C,-20 °C

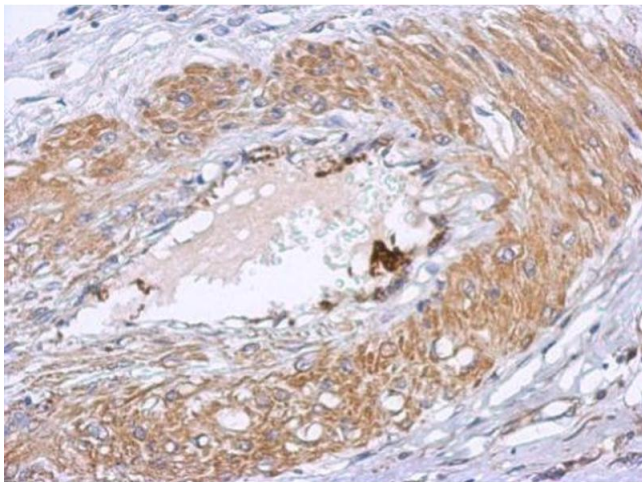
---

**Storage Comment:** Store as concentrated solution. Centrifuge briefly prior to opening vial. For short-term storage (1-2 weeks), store at 4°C. For long-term storage, aliquot and store at -20°C or below. Avoid multiple freeze-thaw cycles.



### Western Blotting

**Image 1.** WB Image Sample (50 ug of whole cell lysate) A: mouse muscle 7.5% SDS PAGE antibody diluted at 1:3000



### Immunohistochemistry

**Image 2.** IHC-P Image Immunohistochemical analysis of paraffin-embedded human gastric cancer, using Dystrobrevin beta, antibody at 1:500 dilution.