

Datasheet for ABIN2855858
anti-ERCC6 antibody (Internal Region)

5 Images

[Go to Product page](#)

Overview

Quantity:	100 µL
Target:	ERCC6
Binding Specificity:	Internal Region
Reactivity:	Human, Rat, Mouse
Host:	Rabbit
Clonality:	Polyclonal
Conjugate:	This ERCC6 antibody is un-conjugated
Application:	Western Blotting (WB), Immunoprecipitation (IP), Immunohistochemistry (Paraffin-embedded Sections) (IHC (p)), Immunofluorescence (IF), Immunocytochemistry (ICC)

Product Details

Immunogen:	Recombinant protein encompassing a sequence within the center region of human CSB. The exact sequence is proprietary.
Isotype:	IgG
Characteristics:	Rabbit Polyclonal antibody to CSB (excision repair cross-complementing rodent repair deficiency, complementation group 6) CSB antibody [N2C1], Internal
Purification:	Purified by antigen-affinity chromatography.

Target Details

Target:	ERCC6
---------	-------

Target Details

Alternative Name:	CSB (ERCC6 Products)
Background:	<p>This gene encodes a DNA-binding protein that is important in transcription-coupled excision repair. The protein has ATP-stimulated ATPase activity, there are contradictory publications reporting presence or absence of helicase activity. The protein appears to interact with several transcription and excision repair proteins, and may promote complex formation at repair sites. Mutations in this gene result in Cockayne syndrome type B.</p> <p>Cellular Localization: Nucleus</p>
Molecular Weight:	168 kDa
Gene ID:	2074
Pathways:	DNA Damage Repair , Chromatin Binding

Application Details

Application Notes:	<p>Suggested dilution Reference ICC/IF 1:100-1:1000* IHC (Formalin-fixed paraffin-embedded sections) 1:100-1:1000* Immunoprecipitation 1:100-1:500* Western blot 1:500-1:3000* Not tested in other applications. *Optimal dilutions/concentrations should be determined by the researcher.Suggested dilutionReferenceICC/IF1:100-1:1000* IHC (Formalin-fixed paraffin-embedded sections)1:100-1:1000* Immunoprecipitation1:100-1:500* Western blot1:500-1:3000*</p>
Comment:	Positive Control: 293T , A431 , HeLa , HepG2
Restrictions:	For Research Use only

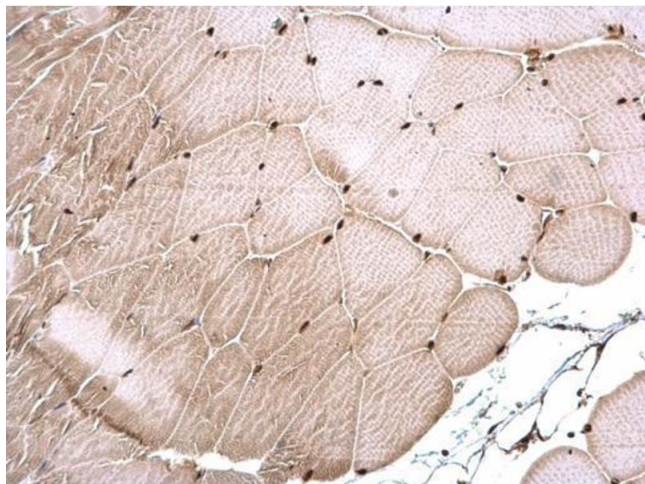
Handling

Format:	Liquid
Concentration:	0.2 mg/mL
Buffer:	1XPBS, 0.2M Tris, 0.2M Glycine, 1 mM EGTA, 50 % Glycerol (pH 7). 0.025 % ProClin 300 was added as a preservative.
Preservative:	ProClin
Precaution of Use:	This product contains ProClin: a POISONOUS AND HAZARDOUS SUBSTANCE which should be handled by trained staff only.
Storage:	-20 °C

Handling

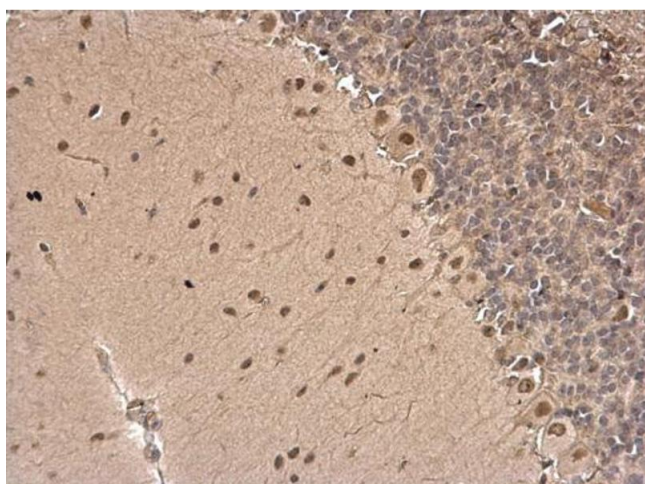
Storage Comment: Keep as concentrated solution. Aliquot and store at -20°C or below. Avoid multiple freeze-thaw cycles.

Images



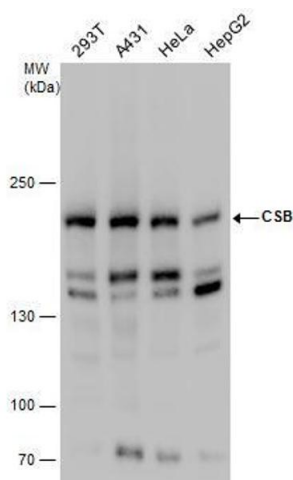
Immunohistochemistry

Image 1. IHC-P Image CSB antibody [N2C1], Internal detects CSB protein at nucleus on mouse muscle by immunohistochemical analysis. Sample: Paraffin-embedded mouse muscle. CSB antibody [N2C1], Internal, dilution: 1:500.



Immunohistochemistry

Image 2. IHC-P Image CSB antibody [N2C1], Internal detects CSB protein at nucleus on rat hind brain by immunohistochemical analysis. Sample: Paraffin-embedded rat hind brain. CSB antibody [N2C1], Internal, dilution: 1:500.



Western Blotting

Image 3. WB Image CSB antibody detects CSB protein by western blot analysis. Various whole cell extracts (30 µg) were separated by 5% SDS-PAGE, and the membrane was blotted with CSB antibody, diluted at a dilution of 1:500.

Please check the [product details page](#) for more images. Overall 5 images are available for ABIN2855858.