

Datasheet for ABIN2855860
anti-GAL3ST1 antibody



[Go to Product page](#)

1 Image

Overview

Quantity:	100 µL
Target:	GAL3ST1
Reactivity:	Human
Host:	Rabbit
Clonality:	Polyclonal
Conjugate:	This GAL3ST1 antibody is un-conjugated
Application:	Western Blotting (WB)

Product Details

Immunogen:	Recombinant protein encompassing a sequence within the center region of human GAL3ST1. The exact sequence is proprietary.
Isotype:	IgG
Cross-Reactivity:	Human
Characteristics:	Rabbit polyclonal antibody to GAL3ST1 (galactose-3-O-sulfotransferase 1) GAL3ST1 antibody [N1C3]
Purification:	Purified by antigen-affinity chromatography.

Target Details

Target:	GAL3ST1
Alternative Name:	galactose-3-O-sulfotransferase 1 (GAL3ST1 Products)

Target Details

Background: Sulfonation, an important step in the metabolism of many drugs, xenobiotics, hormones, and neurotransmitters, is catalyzed by sulfotransferases. The product of this gene is galactosylceramide sulfotransferase which catalyzes the conversion between 3'-phosphoadenylylsulfate + a galactosylceramide to adenosine 3',5'-bisphosphate + galactosylceramide sulfate. Activity of this sulfotransferase is enhanced in renal cell carcinoma.

Cellular Localization: Golgi apparatus membrane, Single-pass type II membrane protein

Molecular Weight: 49 kDa

Gene ID: 9514

UniProt: [Q99999](#)

Application Details

Application Notes: WB: 1:500-1:3000. Optimal dilutions/concentrations should be determined by the researcher. Not tested in other applications.

Restrictions: For Research Use only

Handling

Format: Liquid

Concentration: 0.48 mg/mL

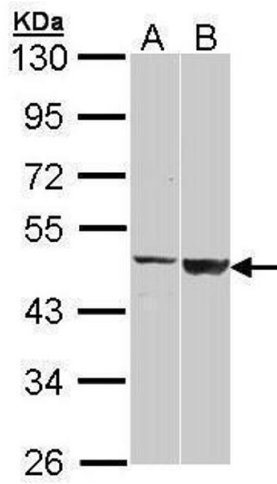
Buffer: 1XPBS pH 7, 1 % BSA, 20 % Glycerol, 0.025 % ProClin 300

Preservative: ProClin

Precaution of Use: This product contains ProClin: a POISONOUS AND HAZARDOUS SUBSTANCE which should be handled by trained staff only.

Storage: 4 °C, -20 °C

Storage Comment: Store as concentrated solution. Centrifuge briefly prior to opening vial. For short-term storage (1-2 weeks), store at 4°C. For long-term storage, aliquot and store at -20°C or below. Avoid multiple freeze-thaw cycles.



Western Blotting

Image 1. WB Image Sample (30 ug of whole cell lysate) A:
H1299 B: Raji 10% SDS PAGE antibody diluted at 1:1000