

Datasheet for ABIN2855867
anti-TPI1 antibody (C-Term)

7 Images

1 Publication

[Go to Product page](#)

Overview

Quantity:	100 µL
Target:	TPI1
Binding Specificity:	C-Term
Reactivity:	Human
Host:	Rabbit
Clonality:	Polyclonal
Conjugate:	This TPI1 antibody is un-conjugated
Application:	Western Blotting (WB), ELISA, Immunofluorescence (IF), Immunohistochemistry (Paraffin-embedded Sections) (IHC (p)), Immunocytochemistry (ICC)

Product Details

Immunogen:	Carrier-protein conjugated synthetic peptide encompassing a sequence within the C-terminus region of human Triosephosphate isomerase. The exact sequence is proprietary.
Isotype:	IgG
Cross-Reactivity:	Human, Mouse, Rat
Characteristics:	Rabbit Polyclonal antibody to Triosephosphate isomerase (triosephosphate isomerase 1) Triosephosphate isomerase antibody [C2C3], C-term
Purification:	Purified by antigen-affinity chromatography.
Grade:	KO Validated

Target Details

Target:	TPI1
Alternative Name:	triosephosphate isomerase 1 (TPI1 Products)
Background:	<p>This gene encodes an enzyme, consisting of two identical proteins, which catalyzes the isomerization of glyceraldehydes 3-phosphate (G3P) and dihydroxy-acetone phosphate (DHAP) in glycolysis and gluconeogenesis. Mutations in this gene are associated with triosephosphate isomerase deficiency. Pseudogenes have been identified on chromosomes 1, 4, 6 and 7.</p> <p>Alternative splicing results in multiple transcript variants.</p>
Molecular Weight:	31 kDa
Gene ID:	7167
UniProt:	P60174
Pathways:	Cell RedoxHomeostasis

Application Details

Application Notes:	WB: 1:500-1:3000. ICC/IF: 1:100-1:1000. IHC-P: 1:100-1:1000. Optimal dilutions/concentrations should be determined by the researcher. Not tested in other applications.
Comment:	<p>Positive Control: Neuro2A , GL261 , C8D30 , NIH-3T3 , BCL-1 , Raw264.7 , C2C12 , PC-12 , Rat2 , 293T , A431 , HeLa , HepG2</p> <p>Validation: KO/KD, Orthogonal</p>
Restrictions:	For Research Use only

Handling

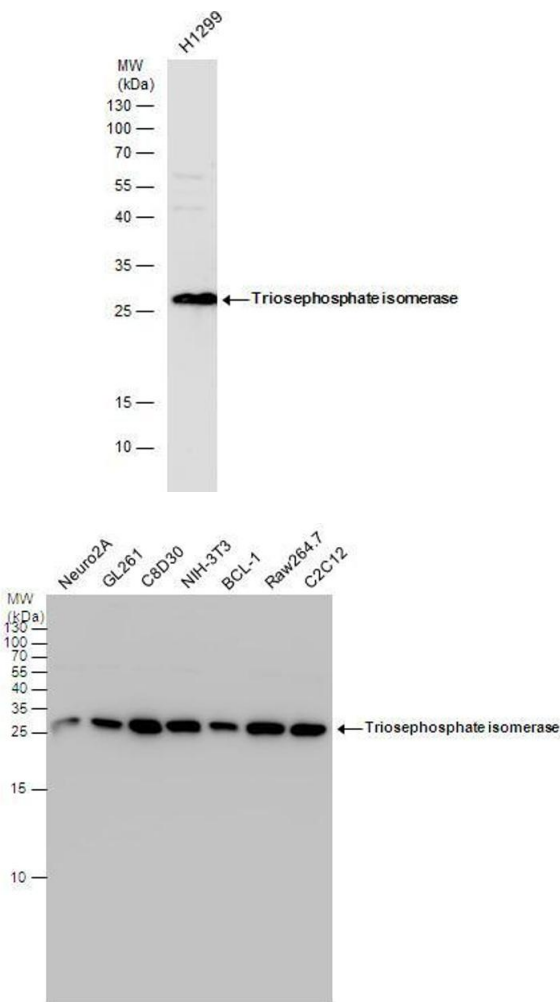
Format:	Liquid
Concentration:	0.27 mg/mL
Buffer:	1XPBS (pH 7), 1 % BSA, 20 % Glycerol, 0.025 % ProClin 300
Preservative:	ProClin
Precaution of Use:	This product contains ProClin: a POISONOUS AND HAZARDOUS SUBSTANCE which should be handled by trained staff only.
Storage:	4 °C,-20 °C
Storage Comment:	Store as concentrated solution. Centrifuge briefly prior to opening vial. For short-term storage

(1-2 weeks), store at 4°C. For long-term storage, aliquot and store at -20°C or below. Avoid multiple freeze-thaw cycles.

Publications

Product cited in: Chen, Lin, Chen, Cheng, Cheng, Imai et al.: "Effect of prednisolone on glyoxalase 1 in an inbred mouse model of aristolochic acid nephropathy using a proteomics method with fluorogenic derivatization-liquid chromatography-tandem mass ..." in: **PLoS ONE**, Vol. 15, Issue 1, pp. e0227838, (2020) ([PubMed](#)).

Images

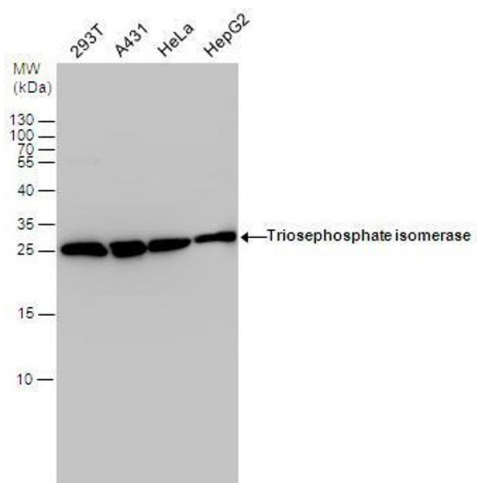


Western Blotting

Image 1. WB Image Triosephosphate isomerase antibody detects Triosephosphate isomerase protein by western blot analysis. Whole cell extracts (30 µg) was separated by 15 % SDS-PAGE, and blotted with Triosephosphate isomerase antibody , diluted by 1:1000

Western Blotting

Image 2. WB Image Triosephosphate isomerase antibody detects Triosephosphate isomerase protein by western blot analysis. Various whole cell extracts (30 µg) were separated by 15% SDS-PAGE, and the membrane was blotted with Triosephosphate isomerase antibody , diluted by 1:1000.



Western Blotting

Image 3. WB Image Triosephosphate isomerase antibody detects Triosephosphate isomerase protein by western blot analysis. Various whole cell extracts (30 µg) were separated by 15% SDS-PAGE, and the membrane was blotted with Triosephosphate isomerase antibody, diluted by 1:1000.

Please check the [product details page](#) for more images. Overall 7 images are available for ABIN2855867.