

Datasheet for ABIN2855871
anti-HSD11B1 antibody (C-Term)

3 Images

1 Publication

[Go to Product page](#)

Overview

Quantity:	100 µL
Target:	HSD11B1
Binding Specificity:	C-Term
Reactivity:	Human
Host:	Rabbit
Clonality:	Polyclonal
Conjugate:	This HSD11B1 antibody is un-conjugated
Application:	Western Blotting (WB), Immunohistochemistry (Paraffin-embedded Sections) (IHC (p)), Immunocytochemistry (ICC), Immunofluorescence (IF), Immunohistochemistry (Frozen Sections) (IHC (fro))

Product Details

Immunogen:	Carrier-protein conjugated synthetic peptide encompassing a sequence within the C-terminus region of human HSD11B1. The exact sequence is proprietary.
Isotype:	IgG
Cross-Reactivity:	Human, Sheep
Characteristics:	Rabbit Polyclonal antibody to HSD11B1 (hydroxysteroid (11-beta) dehydrogenase 1) HSD11B1 antibody
Purification:	Purified by antigen-affinity chromatography.

Target Details

Target:	HSD11B1
Alternative Name:	hydroxysteroid 11-beta dehydrogenase 1 (HSD11B1 Products)
Background:	<p>The protein encoded by this gene is a microsomal enzyme that catalyzes the conversion of the stress hormone cortisol to the inactive metabolite cortisone. In addition, the encoded protein can catalyze the reverse reaction, the conversion of cortisone to cortisol. Too much cortisol can lead to central obesity, and a particular variation in this gene has been associated with obesity and insulin resistance in children. Two transcript variants encoding the same protein have been found for this gene.</p> <p>Cellular Localization: Endoplasmic reticulum membrane</p>
Molecular Weight:	32 kDa
Gene ID:	3290
UniProt:	P28845
Pathways:	Metabolism of Steroid Hormones and Vitamin D , Steroid Hormone Biosynthesis , Regulation of Carbohydrate Metabolic Process

Application Details

Application Notes:	WB: 1:500-1:3000. ICC/IF: 1:100-1:1000. IHC-P: 1:100-1:1000. Optimal dilutions/concentrations should be determined by the researcher. Not tested in other applications.
Comment:	Positive Control: HepG2
Restrictions:	For Research Use only

Handling

Format:	Liquid
Concentration:	1 mg/mL
Buffer:	1XPBS (pH 7), 40 % Glycerol, 0.01 % Thimerosal
Preservative:	Thimerosal (Merthiolate)
Precaution of Use:	This product contains Thimerosal (Merthiolate): a POISONOUS AND HAZARDOUS SUBSTANCE which should be handled by trained staff only.
Storage:	4 °C,-20 °C

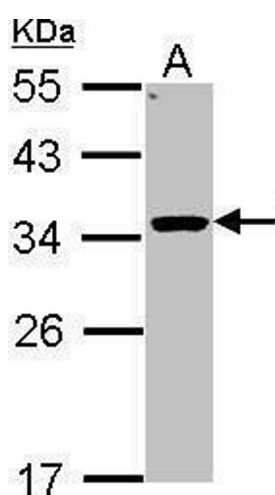
Handling

Storage Comment: Store as concentrated solution. Centrifuge briefly prior to opening vial. For short-term storage (1-2 weeks), store at 4°C. For long-term storage, aliquot and store at -20°C or below. Avoid multiple freeze-thaw cycles.

Publications

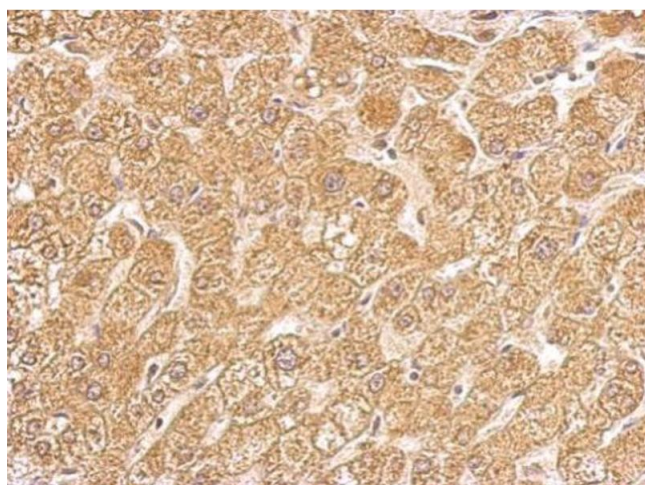
Product cited in: Pfeifer, Thurner, Kessel, Fadle, Kheiroddin, Regitz, Hoffmann, Kos, Preuss, Fischer, Roemer, Lohse, Heyne, Detemple, Fedlmeier, Juenger, Sauer, Meyer, Rohrer, Wittkowski, Becker, Masjosthusmann, Bals et al.: "Autoantibodies against interleukin-1 receptor antagonist in multisystem inflammatory syndrome in children: a multicentre, retrospective, cohort study. ..." in: **The Lancet. Rheumatology**, Vol. 4, Issue 5, pp. e329-e337, (2022) ([PubMed](#)).

Images



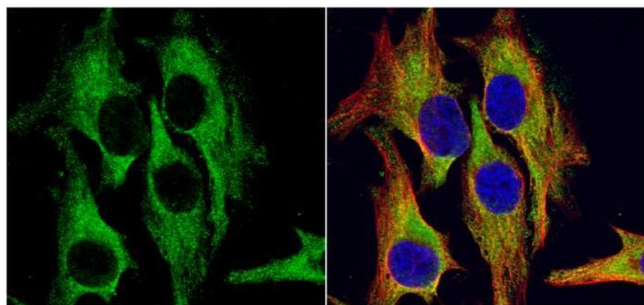
Western Blotting

Image 1. WB Image Sample (30 ug of whole cell lysate) A: Hep G2, 12% SDS PAGE antibody diluted at 1:1000



Immunohistochemistry

Image 2. IHC-P Image HSD11B1 antibody detects HSD11B1 protein at cytosol on human hepatoma by immunohistochemical analysis. Sample: Paraffin-embedded hepatoma. HSD11B1 antibody, dilution: 1:500.



Immunofluorescence

Image 3. ICC/IF Image HSD11B1 antibody detects HSD11B1 protein at cytoplasm by immunofluorescent analysis. Sample: HeLa cells were fixed in 4% paraformaldehyde at RT for 15 min. Green: HSD11B1 protein stained by HSD11B1 antibody, diluted at 1:500. Red: alpha Tubulin, a cytoskeleton marker, stained by alpha Tubulin antibody [B-5-1-2], diluted at 1:10000. Blue: Hoechst 33342 staining.