



[Go to Product page](#)

Datasheet for ABIN2855876
anti-ZBTB24 antibody (C-Term)

4 Images

Overview

Quantity:	100 µL
Target:	ZBTB24
Binding Specificity:	C-Term
Reactivity:	Human, Mouse
Host:	Rabbit
Clonality:	Polyclonal
Conjugate:	This ZBTB24 antibody is un-conjugated
Application:	Western Blotting (WB), Immunohistochemistry (Paraffin-embedded Sections) (IHC (p)), Immunofluorescence (IF), Immunocytochemistry (ICC)

Product Details

Immunogen:	Carrier-protein conjugated synthetic peptide encompassing a sequence within the C-terminus region of human Bif-1. The exact sequence is proprietary.
Isotype:	IgG
Cross-Reactivity:	Rat (Rattus), Zebrafish (Danio rerio), Xenopus laevis, Xenopus tropicalis, Pig (Porcine), Chicken, Rhesus Monkey, Cow (Bovine)
Cross-Reactivity (Details):	Rat (100 %), Zebrafish (100 %), Xenopus laevis (100 %), Xenopus Tropicalis (100 %), Pig (93 %), Chicken (100 %), Rhesus Monkey (100 %), Bovine (93 %)
Characteristics:	Rabbit Polyclonal antibody to Bif1 (SH3-domain GRB2-like endophilin B1) Bif-1 antibody [C2C3], C-term
Purification:	Purified by antigen-affinity chromatography.

Target Details

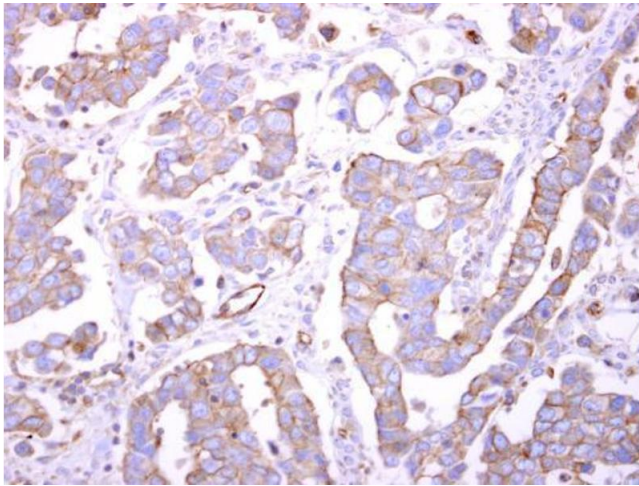
Target:	ZBTB24
Alternative Name:	Bif-1 (ZBTB24 Products)
Background:	May be required for normal outer mitochondrial membrane dynamics. Required for coatomer-mediated retrograde transport in certain cells. May recruit other proteins to membranes with high curvature. May promote membrane fusion. Cellular Localization: Cytoplasm , Golgi apparatus membrane, Peripheral membrane protein (By similarity) , Mitochondrion outer membrane, Peripheral membrane protein
Molecular Weight:	41 kDa
Gene ID:	51100

Application Details

Application Notes:	Suggested dilution Reference ICC/IF 1:100-1:1000* IHC (Formalin-fixed paraffin-embedded sections) 1:100-1:1000* Western blot 1:500-1:3000* Not tested in other applications. *Optimal dilutions/concentrations should be determined by the researcher.Suggested dilutionReferenceICC/IF1:100-1:1000* IHC (Formalin-fixed paraffin-embedded sections)1:100-1:1000* Western blot1:500-1:3000*
Comment:	Positive Control: H1299 , NIH-3T3 , JC , BCL-1
Restrictions:	For Research Use only

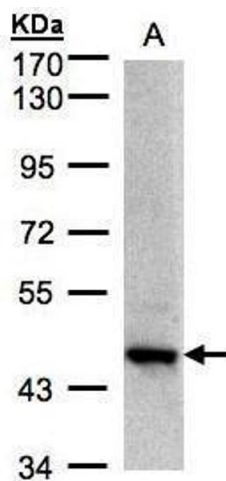
Handling

Format:	Liquid
Concentration:	0.57 mg/mL
Buffer:	0.1M Tris, 0.1M Glycine, 10 % Glycerol (pH 7). 0.01 % Thimerosal was added as a preservative.
Preservative:	Thimerosal (Merthiolate)
Precaution of Use:	This product contains Thimerosal (Merthiolate): a POISONOUS AND HAZARDOUS SUBSTANCE which should be handled by trained staff only.
Storage:	-20 °C
Storage Comment:	Keep as concentrated solution. Aliquot and store at -20°C or below. Avoid multiple freeze-thaw cycles.



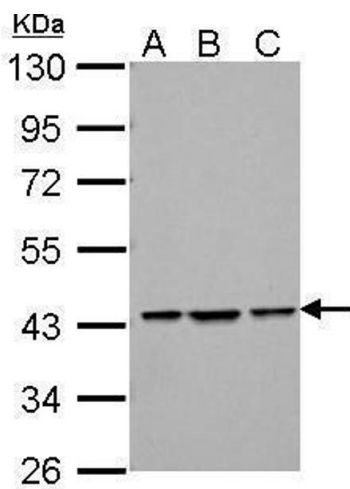
Immunohistochemistry

Image 1. IHC-P Image Bif-1 antibody detects Bif-1 protein at cytosol on human ovarian carcinoma by immunohistochemical analysis. Sample: Paraffin-embedded human ovarian carcinoma. Bif-1 antibody, dilution: 1:500.



Western Blotting

Image 2. WB Image Sample(30 µg of whole cell lysate) A:H1299 7.5% SDS PAGE antibody diluted at 1:1000



Western Blotting

Image 3. WB Image Sample (30 ug of whole cell lysate) A: NIH-3T3 B: JC C: BCL-1 10% SDS PAGE antibody diluted at 1:1000

Please check the [product details page](#) for more images. Overall 4 images are available for ABIN2855876.