

Datasheet for ABIN2855881  
**anti-USP15 antibody (C-Term)**[Go to Product page](#)

## 4 Images

## Overview

|                      |  |
|----------------------|--|
| Quantity:            | 100 µL   |
| Target:              | USP15  |
| Binding Specificity: | C-Term   |
| Reactivity:          | Human  |
| Host:                | Rabbit   |
| Clonality:           | Polyclonal   |
| Conjugate:           | This USP15 antibody is un-conjugated   |
| Application:         | Western Blotting (WB), Immunofluorescence (IF), Immunohistochemistry (Paraffin-embedded Sections) (IHC (p)), Immunocytochemistry (ICC) |

## Product Details

|                   |  |
|-------------------|--|
| Immunogen:        | Carrier-protein conjugated synthetic peptide encompassing a sequence within the C-terminus region of human USP15. The exact sequence is proprietary. |
| Isotype:          | IgG  |
| Cross-Reactivity: | Human, Mouse   |
| Characteristics:  | Rabbit Polyclonal antibody to USP15 (ubiquitin carboxyl-terminal hydrolase 15)<br>USP15 antibody [C3], C-term  |
| Purification:     | Purified by antigen-affinity chromatography.   |
| Grade:            | KO Validated   |

## Target Details

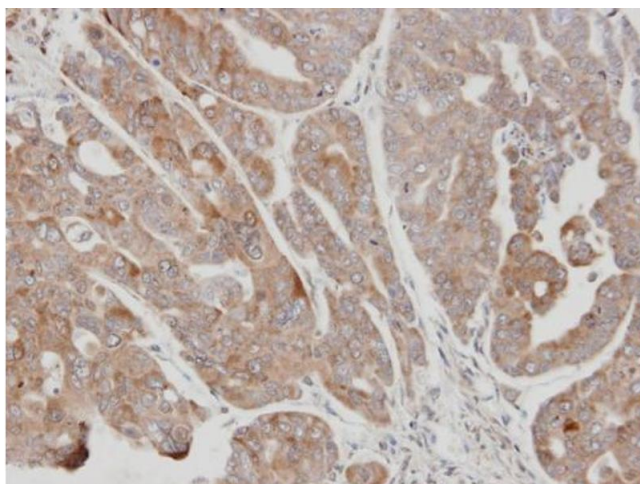
|                   |  |
|-------------------|--|
| Target:           | USP15  |
| Alternative Name: | ubiquitin specific peptidase 15 ( <a href="#">USP15 Products</a> )   |
| Background:       | Ubiquitin (MIM 191339), a highly conserved protein involved in the regulation of intracellular protein breakdown, cell cycle regulation, and stress response, is released from degraded proteins by disassembly of the polyubiquitin chains. The disassembly process is mediated by ubiquitin-specific proteases (USPs). Also see USP1 (MIM 603478).[supplied by OMIM] |
| Molecular Weight: | 112 kDa  |
| Gene ID:          | 9958   |
| UniProt:          | <a href="#">Q9Y4E8</a>   |

## Application Details

|                    |   |
|--------------------|---|
| Application Notes: | WB: 1:500-1:3000. ICC/IF: 1:100-1:1000. IHC-P: 1:100-1:1000. Optimal dilutions/concentrations should be determined by the researcher. Not tested in other applications. |
| Comment:           | Positive Control: NIH-3T3 , JC , BCL-1<br>Validation: KO/KD   |
| Restrictions:      | For Research Use only   |

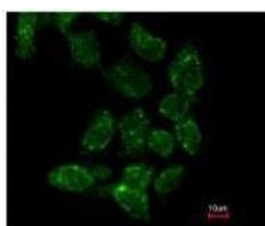
## Handling

|                    |  |
|--------------------|--|
| Format:            | Liquid   |
| Concentration:     | 0.3 mg/mL  |
| Buffer:            | 1XPBS pH 7, 1 % BSA, 20 % Glycerol, 0.025 % ProClin 300  |
| Preservative:      | ProClin  |
| Precaution of Use: | This product contains ProClin: a POISONOUS AND HAZARDOUS SUBSTANCE which should be handled by trained staff only.  |
| Storage:           | 4 °C,-20 °C  |
| Storage Comment:   | Store as concentrated solution. Centrifuge briefly prior to opening vial. For short-term storage (1-2 weeks), store at 4°C. For long-term storage, aliquot and store at -20°C or below. Avoid multiple freeze-thaw cycles. |

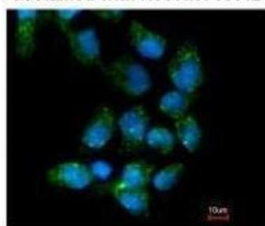


#### Immunohistochemistry

**Image 1.** IHC-P Image Immunohistochemical analysis of paraffin-embedded N87 xenograft, using USP15, antibody at 1:100 dilution.

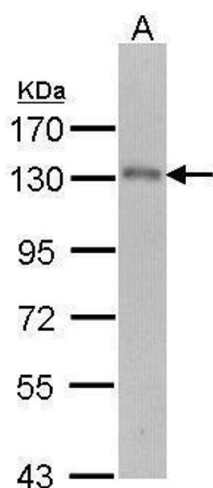


Costained with Hoechst 33342



#### Immunofluorescence

**Image 2.** ICC/IF Image Immunofluorescence analysis of paraformaldehyde-fixed A431, using USP15, antibody at 1:200 dilution.



#### Western Blotting

**Image 3.** WB Image Sample (30 ug of whole cell lysate) A: Molt-4, 7.5% SDS PAGE antibody diluted at 1:1000

Please check the [product details page](#) for more images. Overall 4 images are available for ABIN2855881.