



Datasheet for ABIN2855884
anti-CTDP1 antibody (N-Term)



[Go to Product page](#)

3 Images

Overview

Quantity:	100 µL
Target:	CTDP1
Binding Specificity:	N-Term
Reactivity:	Human
Host:	Rabbit
Clonality:	Polyclonal
Conjugate:	This CTDP1 antibody is un-conjugated
Application:	Western Blotting (WB), Immunohistochemistry (Paraffin-embedded Sections) (IHC (p))

Product Details

Immunogen:	Carrier-protein conjugated synthetic peptide encompassing a sequence within the N-terminus region of human FCP1. The exact sequence is proprietary.
Isotype:	IgG
Characteristics:	Rabbit polyclonal antibody to FCP1 (CTD (carboxy-terminal domain, RNA polymerase II, polypeptide A) phosphatase, subunit 1) FCP1 antibody
Purification:	Purified by antigen-affinity chromatography.

Target Details

Target:	CTDP1
Alternative Name:	FCP1 (CTDP1 Products)

Target Details

Background: This gene encodes a protein which interacts with the carboxy-terminus of transcription initiation factor TFIIIF, a transcription factor which regulates elongation as well as initiation by RNA polymerase II. The protein may also represent a component of an RNA polymerase II holoenzyme complex. Alternative splicing of this gene results in two transcript variants encoding 2 different isoforms.

Cellular Localization: Nucleus

Molecular Weight: 104 kDa

Gene ID: 9150

Application Details

Application Notes: Suggested dilution Reference IHC (Formalin-fixed paraffin-embedded sections) 1:100-1:1000* Western blot 1:500-1:3000* Not tested in other applications. *Optimal dilutions/concentrations should be determined by the researcher. Suggested dilution Reference IHC (Formalin-fixed paraffin-embedded sections) 1:100-1:1000* Western blot 1:500-1:3000*

Comment: Positive Control: 293T , A431 , H1299 , HeLa , HepG2 , Molt-4

Restrictions: For Research Use only

Handling

Format: Liquid

Concentration: 1 mg/mL

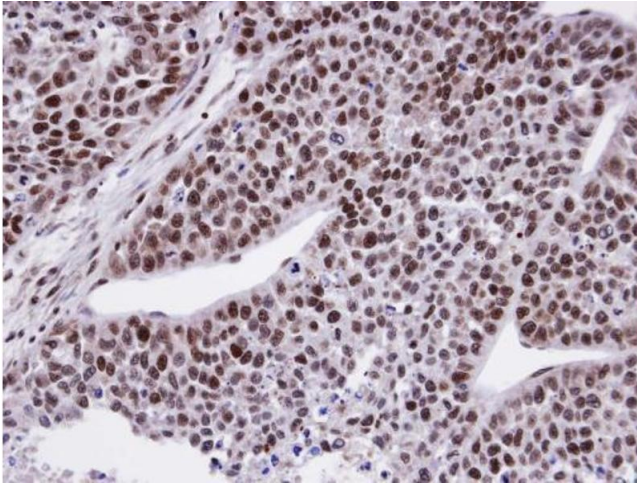
Buffer: 1XPBS, 40 % Glycerol (pH 7). 0.01 % Thimerosal was added as a preservative.

Preservative: Thimerosal (Merthiolate)

Precaution of Use: This product contains Thimerosal (Merthiolate): a POISONOUS AND HAZARDOUS SUBSTANCE which should be handled by trained staff only.

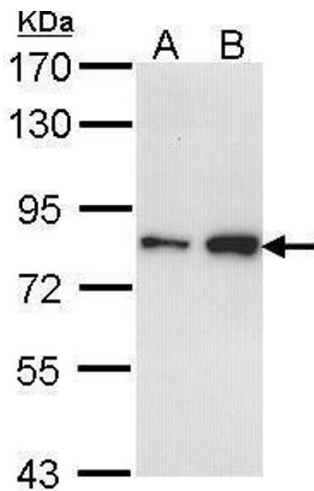
Storage: -20 °C

Storage Comment: Keep as concentrated solution. Aliquot and store at -20°C or below. Avoid multiple freeze-thaw cycles.



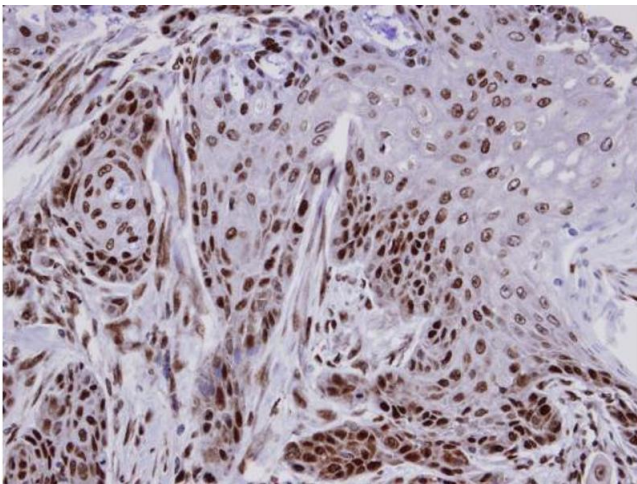
Immunohistochemistry

Image 1. IHC-P Image Immunohistochemical analysis of paraffin-embedded HeLa xenograft, using CTD1P1 , antibody at 1:100 dilution.



Western Blotting

Image 2. WB Image Sample (30 ug of whole cell lysate) A: A431 , B: H1299 7.5% SDS PAGE antibody diluted at 1:1000



Immunohistochemistry

Image 3. IHC-P Image Immunohistochemical analysis of paraffin-embedded Cal27 xenograft, using CTD1P1 , antibody at 1:100 dilution.