

Datasheet for ABIN2855887  
**anti-CLPP antibody (C-Term)**

4 Images

1 Publication

[Go to Product page](#)

## Overview

Quantity:	100 µL
Target:	CLPP
Binding Specificity:	C-Term
Reactivity:	Human
Host:	Rabbit
Clonality:	Polyclonal
Conjugate:	This CLPP antibody is un-conjugated
Application:	Western Blotting (WB), Immunofluorescence (IF), Immunohistochemistry (Paraffin-embedded Sections) (IHC (p)), Immunocytochemistry (ICC)

## Product Details

Immunogen:	Carrier-protein conjugated synthetic peptide encompassing a sequence within the C-terminus region of human CLPP. The exact sequence is proprietary.
Isotype:	IgG
Characteristics:	Rabbit Polyclonal antibody to CLPP (ClpP caseinolytic peptidase, ATP-dependent, proteolytic subunit homolog (E. coli)) CLPP antibody [C2C3], C-term
Purification:	Purified by antigen-affinity chromatography.

## Target Details

Target:	CLPP
---------	------

## Target Details

Alternative Name:	CLPP ( <a href="#">CLPP Products</a> )
Background:	<p>The protein encoded by this gene belongs to the peptidase family S14 and hydrolyzes proteins into small peptides in the presence of ATP and magnesium. The protein is transported into mitochondrial matrix and is associated with the inner mitochondrial membrane.</p> <p>Cellular Localization: Mitochondrion</p>
Molecular Weight:	30 kDa
Gene ID:	8192

## Application Details

Application Notes:	<p>Suggested dilution Reference ICC/IF 1:100-1:1000* IHC (Formalin-fixed paraffin-embedded sections) 1:100-1:1000* Western blot 1:500-1:3000* Not tested in other applications. *Optimal dilutions/concentrations should be determined by the researcher.Suggested dilutionReferenceICC/IF1:100-1:1000* IHC (Formalin-fixed paraffin-embedded sections)1:100-1:1000* Western blot1:500-1:3000*</p>
Comment:	Positive Control: 293T , A431 , H1299 , HepG2 , Molt-4 , Raji , Jurkat , NCI-H929
Restrictions:	For Research Use only

## Handling

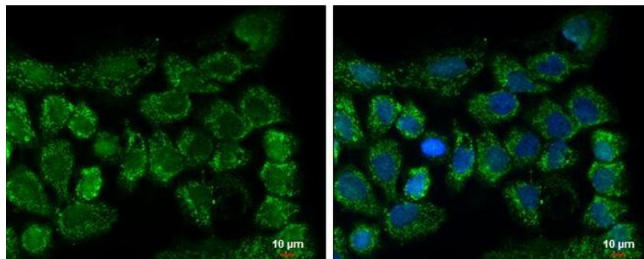
Format:	Liquid
Concentration:	1 mg/mL
Buffer:	1XPBS, 10 % Glycerol ( pH 7). 0.01 % Thimerosal was added as a preservative.
Preservative:	Thimerosal (Merthiolate)
Precaution of Use:	This product contains Thimerosal (Merthiolate): a POISONOUS AND HAZARDOUS SUBSTANCE which should be handled by trained staff only.
Storage:	-20 °C
Storage Comment:	Keep as concentrated solution. Aliquot and store at -20°C or below. Avoid multiple freeze-thaw cycles.

## Publications

Product cited in:	Salzman, Nakamura, Nallur, Dookwah, Metheetrairut, Slack, Weidhaas: "miR-34 activity is
-------------------	---

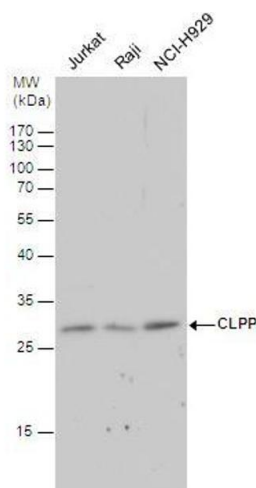
modulated through 5'-end phosphorylation in response to DNA damage." in: **Nature communications**, Vol. 7, pp. 10954, (2016) ([PubMed](#)).

## Images



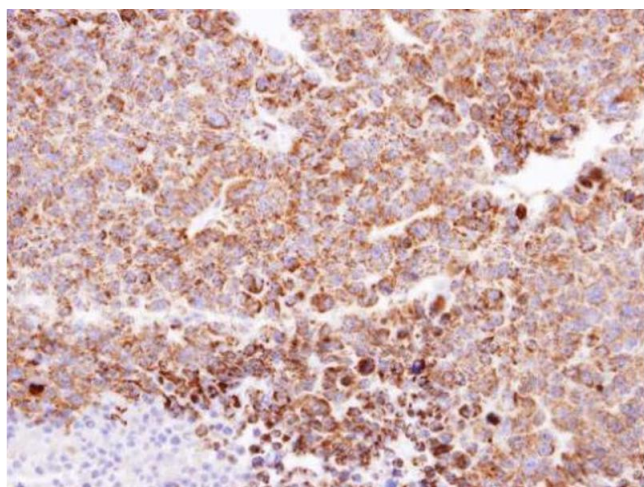
### Immunofluorescence

**Image 1.** ICC/IF Image CLPP antibody [C2C3], C-term detects CLPP protein at mitochondria by immunofluorescent analysis. Sample: A431 cells were fixed in 2% paraformaldehyde/culture medium at RT for 30 min. Green: CLPP protein stained by CLPP antibody [C2C3], C-term, diluted at 1:500. Blue: Hoechst 33342 staining. Scale bar = 10 µm.



### Western Blotting

**Image 2.** WB Image CLPP antibody detects CLPP protein by western blot analysis. Various whole cell extracts (30 µg) were separated by 12% SDS-PAGE, and the membrane was blotted with CLPP antibody, diluted by 1:500.



### Immunohistochemistry

**Image 3.** IHC-P Image Immunohistochemical analysis of paraffin-embedded H520 xenograft, using CLPP, antibody at 1:100 dilution.

Please check the [product details page](#) for more images. Overall 4 images are available for ABIN2855887.