

Datasheet for ABIN2855891

anti-PEPCK antibody**6** Images[Go to Product page](#)

Overview

Quantity:	100 µL
Target:	PEPCK
Reactivity:	Human
Host:	Rabbit
Clonality:	Polyclonal
Conjugate:	This PEPCK antibody is un-conjugated
Application:	Western Blotting (WB), Immunohistochemistry (Paraffin-embedded Sections) (IHC (p)), Immunofluorescence (IF), Immunocytochemistry (ICC)

Product Details

Immunogen:	Carrier-protein conjugated synthetic peptide encompassing a sequence within the center region of human PCK2. The exact sequence is proprietary.
Isotype:	IgG
Cross-Reactivity:	Human, Mouse, Rat
Characteristics:	Rabbit Polyclonal antibody to PCK2 (phosphoenolpyruvate carboxykinase 2 (mitochondrial)) PCK2 antibody [C1C2], Internal
Purification:	Purified by antigen-affinity chromatography.

Target Details

Target:	PEPCK
Alternative Name:	phosphoenolpyruvate carboxykinase 2, mitochondrial (PEPCK Products)

Target Details

Background: This gene encodes a member of the phosphoenolpyruvate carboxykinase (GTP) family. The protein is a mitochondrial enzyme that catalyzes the conversion of oxaloacetate to phosphoenolpyruvate in the presence of GTP. A cytosolic form encoded by a different gene has also been characterized and is the key enzyme of gluconeogenesis in the liver. The encoded protein may serve a similar function, although it is constitutively expressed and not modulated by hormones such as glucagon and insulin that regulate the cytosolic form. Alternatively spliced transcript variants have been described.

Cellular Localization: Mitochondrion

Molecular Weight: 71 kDa

Gene ID: 5106

UniProt: [Q16822](#)

Pathways: [Positive Regulation of Peptide Hormone Secretion](#), [Carbohydrate Homeostasis](#)

Application Details

Application Notes: WB: 1:500-1:3000. ICC/IF: 1:100-1:1000. IHC-P: 1:100-1:1000. Optimal dilutions/concentrations should be determined by the researcher. Not tested in other applications.

Comment: Positive Control: HepG2 , Neuro2A , GL261 , PC-12
Validation: Orthogonal

Restrictions: For Research Use only

Handling

Format: Liquid

Concentration: 1 mg/mL

Buffer: 1XPBS (pH 7), 40 % Glycerol, 0.01 % Thimerosal

Preservative: Thimerosal (Merthiolate)

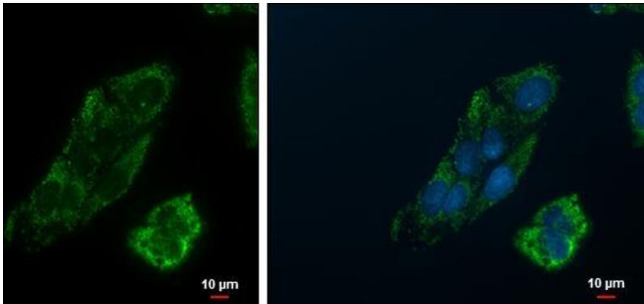
Precaution of Use: This product contains Thimerosal (Merthiolate): a POISONOUS AND HAZARDOUS SUBSTANCE which should be handled by trained staff only.

Storage: 4 °C,-20 °C

Storage Comment: Store as concentrated solution. Centrifuge briefly prior to opening vial. For short-term storage (1-2 weeks), store at 4°C. For long-term storage, aliquot and store at -20°C or below. Avoid

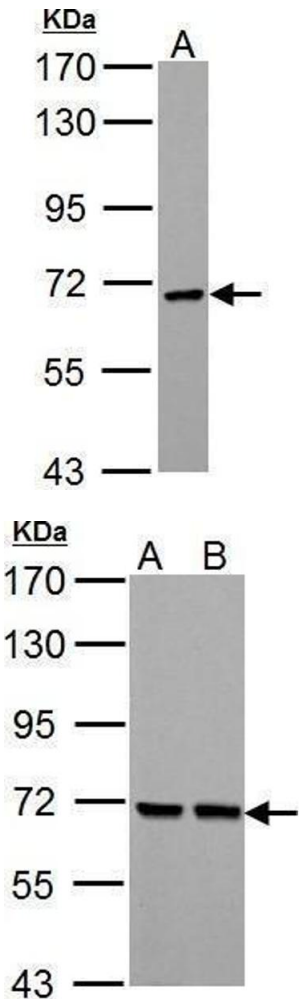
multiple freeze-thaw cycles.

Images



Immunofluorescence

Image 1. ICC/IF Image PCK2 antibody [C1C2], Internal detects PCK2 protein at mitochondria by immunofluorescent analysis. Sample: Hep G2 cells were fixed in 2% paraformaldehyde/culture medium at 37oC for 30 min. Green: PCK2 protein stained by PCK2 antibody [C1C2], Internal , diluted at 1:500. Blue: Hoechst 33342 staining. Scale bar = 10 µm.



Western Blotting

Image 2. WB Image PCK2 antibody [C1C2], Internal detects PCK2 protein by Western blot analysis. A. 30 µg HepG2 whole cell lysate/extract 7.5 % SDS-PAGE PCK2 antibody [C1C2], Internal , dilution: 1:1000

Western Blotting

Image 3. WB Image PCK2 antibody [C1C2], Internal detects PCK2 protein by Western blot analysis. A. 30 µg Neuro2A whole cell lysate/extract B. 30 µg GL261 whole cell lysate/extract 7.5 % SDS-PAGE PCK2 antibody [C1C2], Internal , dilution: 1:1000

Please check the [product details page](#) for more images. Overall 6 images are available for ABIN2855891.