



[Go to Product page](#)

Datasheet for ABIN2855893
anti-RNF25 antibody (C-Term)

3 Images

Overview

Quantity:	100 µL
Target:	RNF25
Binding Specificity:	C-Term
Reactivity:	Human
Host:	Rabbit
Clonality:	Polyclonal
Conjugate:	This RNF25 antibody is un-conjugated
Application:	Western Blotting (WB), Immunohistochemistry (Paraffin-embedded Sections) (IHC (p)), Immunofluorescence (IF), Immunocytochemistry (ICC)

Product Details

Immunogen:	Carrier-protein conjugated synthetic peptide encompassing a sequence within the C-terminus region of human RNF25. The exact sequence is proprietary.
Isotype:	IgG
Cross-Reactivity:	Human
Characteristics:	Rabbit Polyclonal antibody to RNF25 (ring finger protein 25) RNF25 antibody [C2C3], C-term
Purification:	Purified by antigen-affinity chromatography.

Target Details

Target:	RNF25
---------	-------

Target Details

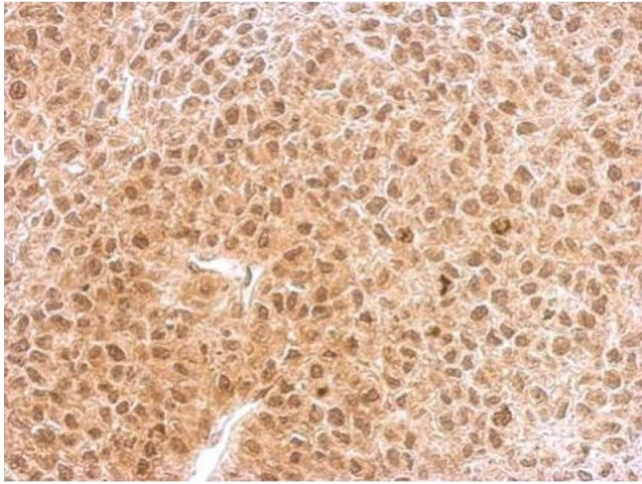
Alternative Name:	ring finger protein 25 (RNF25 Products)
Background:	The protein encoded by this gene contains a RING finger motif. The mouse counterpart of this protein has been shown to interact with RelA, the p65 subunit of NF-kappaB (NFkB), and modulate NFkB-mediated transcription activity. The mouse protein also binds ubiquitin-conjugating enzymes (E2s) and is a substrate for E2-dependent ubiquitination.
Molecular Weight:	51 kDa
Gene ID:	64320
UniProt:	Q96BH1

Application Details

Application Notes:	WB: 1:500-1:3000. ICC/IF: 1:100-1:1000. IHC-P: 1:100-1:1000. Optimal dilutions/concentrations should be determined by the researcher. Not tested in other applications.
Comment:	Positive Control: H1299
Restrictions:	For Research Use only

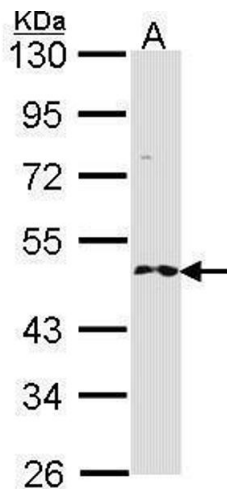
Handling

Format:	Liquid
Concentration:	1 mg/mL
Buffer:	1XPBS (pH 7), 40 % Glycerol, 0.01 % Thimerosal
Preservative:	Thimerosal (Merthiolate)
Precaution of Use:	This product contains Thimerosal (Merthiolate): a POISONOUS AND HAZARDOUS SUBSTANCE which should be handled by trained staff only.
Storage:	4 °C, -20 °C
Storage Comment:	Store as concentrated solution. Centrifuge briefly prior to opening vial. For short-term storage (1-2 weeks), store at 4°C. For long-term storage, aliquot and store at -20°C or below. Avoid multiple freeze-thaw cycles.



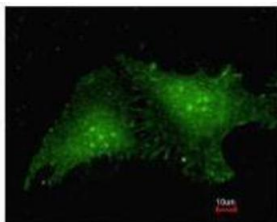
Immunohistochemistry

Image 1. IHC-P Image RNF25 antibody [C2C3], C-term detects RNF25 protein at nucleus and cytosol on HeLa xenograft by immunohistochemical analysis. Sample: Paraffin-embedded HeLa xenograft. RNF25 antibody [C2C3], C-term , dilution: 1:500.

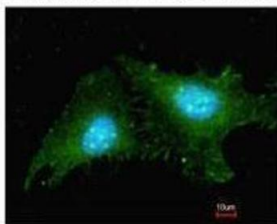


Western Blotting

Image 2. WB Image Sample (30 ug of whole cell lysate) A: H1299 10% SDS PAGE antibody diluted at 1:1000



Costained with Hoechst 33342



Immunofluorescence

Image 3. ICC/IF Image Immunofluorescence analysis of methanol-fixed HeLa, using RNF25, antibody at 1:200 dilution.