



[Go to Product page](#)

Datasheet for ABIN2855897
anti-MAD2L1 antibody (C-Term)

6 Images

Overview

Quantity:	100 µL
Target:	MAD2L1
Binding Specificity:	C-Term
Reactivity:	Human, Rat
Host:	Rabbit
Clonality:	Polyclonal
Conjugate:	This MAD2L1 antibody is un-conjugated
Application:	Western Blotting (WB), Immunofluorescence (IF), Immunoprecipitation (IP), Immunohistochemistry (Paraffin-embedded Sections) (IHC (p)), Immunocytochemistry (ICC)

Product Details

Immunogen:	Carrier-protein conjugated synthetic peptide encompassing a sequence within the C-terminus region of human MAD2L1. The exact sequence is proprietary.
Isotype:	IgG
Cross-Reactivity:	Cow (Bovine), Mouse (Murine), Rhesus Monkey
Cross-Reactivity (Details):	Mouse (92 %), Rhesus Monkey (100 %), Bovine (100 %)
Characteristics:	Rabbit Polyclonal antibody to MAD2L1 (MAD2 mitotic arrest deficient-like 1 (yeast)) MAD2L1 antibody [C2C3], C-term
Purification:	Purified by antigen-affinity chromatography.

Target Details

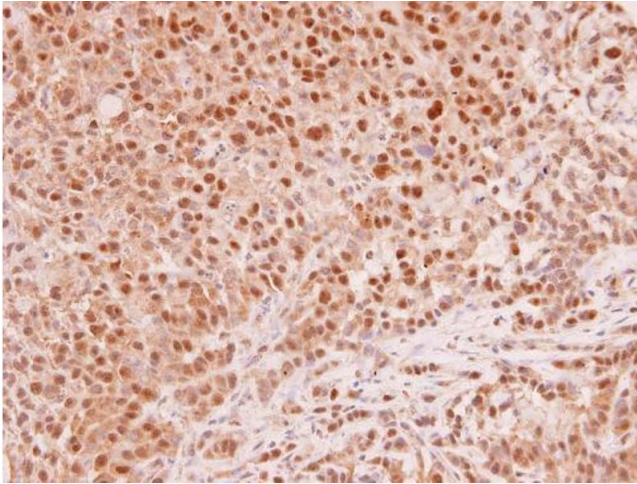
Target:	MAD2L1
Alternative Name:	MAD2L1 (MAD2L1 Products)
Background:	MAD2L1 is a component of the mitotic spindle assembly checkpoint that prevents the onset of anaphase until all chromosomes are properly aligned at the metaphase plate. MAD2L1 is related to the MAD2L2 gene located on chromosome 1. A MAD2 pseudogene has been mapped to chromosome 14.
Molecular Weight:	24 kDa
Gene ID:	4085

Application Details

Application Notes:	Suggested dilution Reference ICC/IF 1:100-1:1000* IHC (Formalin-fixed paraffin-embedded sections) 1:100-1:1000* Immunoprecipitation 1:100-1:500* Western blot 1:500-1:3000* Not tested in other applications. *Optimal dilutions/concentrations should be determined by the researcher.Suggested dilutionReferenceICC/IF1:100-1:1000* IHC (Formalin-fixed paraffin-embedded sections)1:100-1:1000* Immunoprecipitation1:100-1:500* Western blot1:500-1:3000*
Comment:	Positive Control: NCIN87, U2OS, Hep G2, Molt4, Raji
Restrictions:	For Research Use only

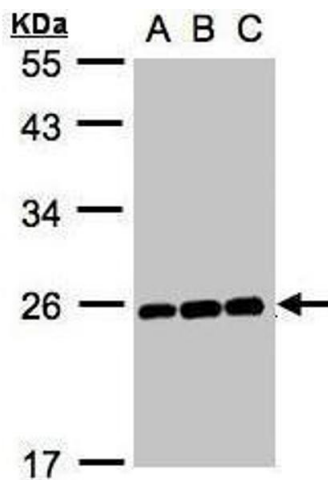
Handling

Format:	Liquid
Concentration:	1 mg/mL
Buffer:	1XPBS, 40 % Glycerol (pH 7). 0.01 % Thimerosal was added as a preservative.
Preservative:	Thimerosal (Merthiolate)
Precaution of Use:	This product contains Thimerosal (Merthiolate): a POISONOUS AND HAZARDOUS SUBSTANCE which should be handled by trained staff only.
Storage:	-20 °C
Storage Comment:	Keep as concentrated solution. Aliquot and store at -20°C or below. Avoid multiple freeze-thaw cycles.



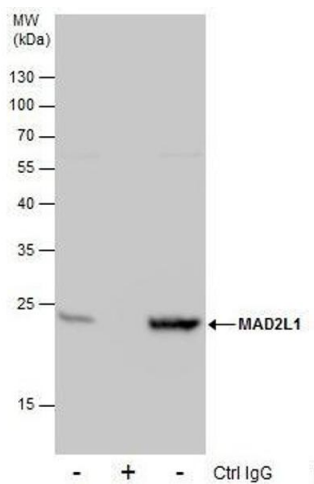
Immunohistochemistry

Image 1. IHC-P Image MAD2L1 antibody [C2C3], C-term detects MAD2L1 protein at cytoplasm and nucleus in human A549 xenograft by immunohistochemical analysis. Sample: Paraffin-embedded human A549 xenograft. MAD2L1 antibody [C2C3], C-term , diluted at 1:250.



Western Blotting

Image 2. WB Image Sample (30µg whole cell lysate) A:Hep G2 , B:MOLT4 , C:Raji , 12% SDS PAGE antibody diluted at 1:1000



Immunoprecipitation

Image 3. IP Image Immunoprecipitation of MAD2L1 protein from 293T whole cell extracts using 5 µg of MAD2L1 antibody [C2C3], C-term, Western blot analysis was performed using MAD2L1 antibody [C2C3], C-term, EasyBlot anti-Rabbit IgG was used as a secondary reagent.

Please check the [product details page](#) for more images. Overall 6 images are available for ABIN2855897.