



[Go to Product page](#)

Datasheet for ABIN2855903

anti-RPL37 antibody

3 Images

Overview

Quantity:	100 µL
Target:	RPL37
Reactivity:	Human
Host:	Rabbit
Clonality:	Polyclonal
Conjugate:	This RPL37 antibody is un-conjugated
Application:	Western Blotting (WB), Immunocytochemistry (ICC), Immunofluorescence (IF)

Product Details

Immunogen:	Carrier-protein conjugated synthetic peptide encompassing a sequence within the center region of human RPL37. The exact sequence is proprietary.
Isotype:	IgG
Cross-Reactivity:	Human
Characteristics:	Rabbit polyclonal antibody to RPL37 (ribosomal protein L37) RPL37 antibody
Purification:	Purified by antigen-affinity chromatography.

Target Details

Target:	RPL37
Alternative Name:	ribosomal protein L37 (RPL37 Products)

Target Details

Background: Ribosomes, the organelles that catalyze protein synthesis, consist of a small 40S subunit and a large 60S subunit. Together these subunits are composed of 4 RNA species and approximately 80 structurally distinct proteins. This gene encodes a ribosomal protein that is a component of the 60S subunit. The protein belongs to the L37E family of ribosomal proteins. It is located in the cytoplasm. The protein contains a C2C2-type zinc finger-like motif. As is typical for genes encoding ribosomal proteins, there are multiple processed pseudogenes of this gene dispersed through the genome.

Molecular Weight: 11 kDa

Gene ID: 6167

UniProt: [P61927](#)

Application Details

Application Notes: WB: 1:500-1:3000. ICC/IF: 1:100-1:1000. Optimal dilutions/concentrations should be determined by the researcher. Not tested in other applications.

Comment: Positive Control: 293T , HeLa , Jurkat , Raji , NCI-H929

Restrictions: For Research Use only

Handling

Format: Liquid

Concentration: 1 mg/mL

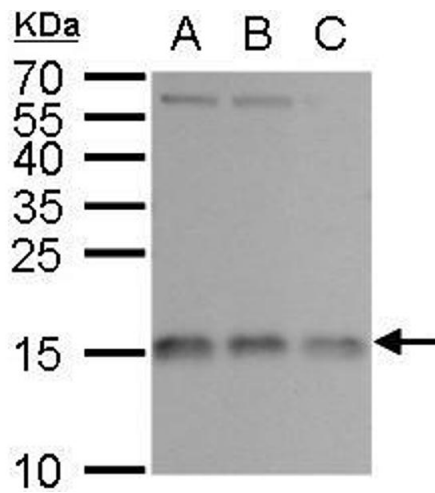
Buffer: 1XPBS (pH 7), 1 % BSA, 20 % Glycerol, 0.01 % Thimerosal

Preservative: Thimerosal (Merthiolate)

Precaution of Use: This product contains Thimerosal (Merthiolate): a POISONOUS AND HAZARDOUS SUBSTANCE which should be handled by trained staff only.

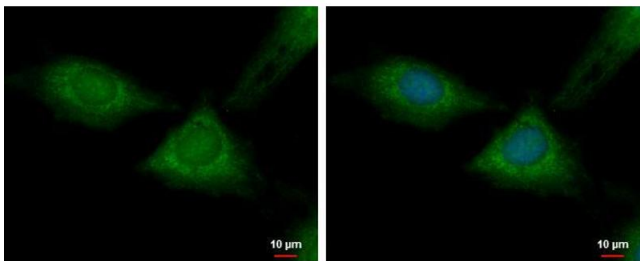
Storage: 4 °C,-20 °C

Storage Comment: Store as concentrated solution. Centrifuge briefly prior to opening vial. For short-term storage (1-2 weeks), store at 4°C. For long-term storage, aliquot and store at -20°C or below. Avoid multiple freeze-thaw cycles.



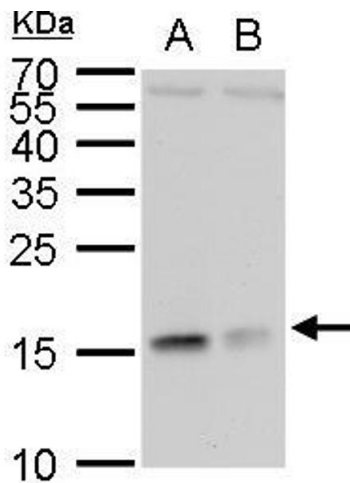
Western Blotting

Image 1. WB Image RPL37 antibody detects RPL37 protein by western blot analysis. A. 30 μ g Jurkat whole cell lysate/extract B. 30 μ g Raji whole cell lysate/extract C. 30 μ g NCI-H929 whole cell lysate/extract 15 % SDS-PAGE RPL37 antibody , dilution: 1:1000



Immunofluorescence

Image 2. ICC/IF Image RPL37 antibody detects RPL37 protein at cytoplasm by immunofluorescent analysis. Sample: HeLa cells were fixed in 4% paraformaldehyde at RT for 15 min. Green: RPL37 protein stained by RPL37 antibody , diluted at 1:500. Blue: Hoechst 33342 staining.



Western Blotting

Image 3. WB Image RPL37 antibody detects RPL37 protein by western blot analysis. A. 30 μ g 293T whole cell lysate/extract B. 30 μ g HeLa whole cell lysate/extract 15 % SDS-PAGE RPL37 antibody , dilution: 1:1000