

Datasheet for ABIN2855907
anti-DCXR antibody (C-Term)[Go to Product page](#)

1 Image

Overview

Quantity:	100 µL
Target:	DCXR
Binding Specificity:	C-Term
Reactivity:	Human
Host:	Rabbit
Clonality:	Polyclonal
Conjugate:	This DCXR antibody is un-conjugated
Application:	Western Blotting (WB)

Product Details

Immunogen:	Carrier-protein conjugated synthetic peptide encompassing a sequence within the C-terminus region of human DCXR. The exact sequence is proprietary.
Isotype:	IgG
Cross-Reactivity:	Mouse (Murine), Guinea Pig
Cross-Reactivity (Details):	Mouse (83 %), Guinea pig (83 %)
Characteristics:	Rabbit polyclonal antibody to DCXR (dicarbonyl/L-xylulose reductase) DCXR antibody [C2C3], C-term
Purification:	Purified by antigen-affinity chromatography.

Target Details

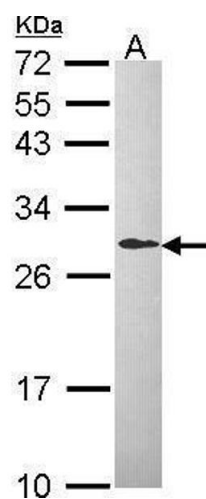
Target:	DCXR
Alternative Name:	L-Xylulose Reductase (DCXR Products)
Background:	DCXR is an enzyme that has both diacetyl reductase (EC 1.1.1.5) and L-xylulose reductase (EC 1.1.1.10) activities (Nakagawa et al., 2002 [PubMed 11882650]).[supplied by OMIM] Cellular Localization: Membrane, Peripheral membrane protein , Membrane
Molecular Weight:	26 kDa
Gene ID:	51181
Pathways:	Glycosaminoglycan Metabolic Process , Monocarboxylic Acid Catabolic Process

Application Details

Application Notes:	Suggested dilution Reference Western blot 1:500-1:3000* Not tested in other applications. *Optimal dilutions/concentrations should be determined by the researcher.Suggested dilutionReferenceWestern blot1:500-1:3000*
Comment:	Positive Control: HepG2
Restrictions:	For Research Use only

Handling

Format:	Liquid
Concentration:	1 mg/mL
Buffer:	1XPBS, 40 % Glycerol (pH 7). 0.01 % Thimerosal was added as a preservative.
Preservative:	Thimerosal (Merthiolate)
Precaution of Use:	This product contains Thimerosal (Merthiolate): a POISONOUS AND HAZARDOUS SUBSTANCE which should be handled by trained staff only.
Storage:	-20 °C
Storage Comment:	Keep as concentrated solution. Aliquot and store at -20°C or below. Avoid multiple freeze-thaw cycles.



Western Blotting

Image 1. WB Image Sample (30 ug of whole cell lysate) A:
Hep G2 , 12% SDS PAGE antibody diluted at 1:1000