



[Go to Product page](#)

Datasheet for ABIN2855908
anti-PPIA antibody (C-Term)

4 Images

Overview

Quantity:	100 µL
Target:	PPIA
Binding Specificity:	C-Term
Reactivity:	Human
Host:	Rabbit
Clonality:	Polyclonal
Conjugate:	This PPIA antibody is un-conjugated
Application:	Western Blotting (WB), Immunocytochemistry (ICC), Immunohistochemistry (Paraffin-embedded Sections) (IHC (p)), Immunofluorescence (IF)

Product Details

Immunogen:	Carrier-protein conjugated synthetic peptide encompassing a sequence within the C-terminus region of human Cyclophilin A. The exact sequence is proprietary.
Isotype:	IgG
Cross-Reactivity:	Hamster, Human, Mouse, Rat
Characteristics:	Rabbit Polyclonal antibody to Cyclophilin A (peptidylprolyl isomerase A (cyclophilin A)) Cyclophilin A antibody [C1C3]
Purification:	Purified by antigen-affinity chromatography.
Grade:	KO Validated

Target Details

Target:	PPIA
Alternative Name:	peptidylprolyl isomerase A (PPIA Products)
Background:	<p>This gene encodes a member of the peptidyl-prolyl cis-trans isomerase (PPIase) family. PPIases catalyze the cis-trans isomerization of proline imidic peptide bonds in oligopeptides and accelerate the folding of proteins. The encoded protein is a cyclosporin binding-protein and may play a role in cyclosporin A-mediated immunosuppression. The protein can also interact with several HIV proteins, including p55 gag, Vpr, and capsid protein, and has been shown to be necessary for the formation of infectious HIV virions. Multiple pseudogenes that map to different chromosomes have been reported.</p>
Molecular Weight:	18 kDa
Gene ID:	5478
UniProt:	P62937

Application Details

Application Notes:	WB: 1:5000-1:20000. ICC/IF: 1:100-1:1000. IHC-P: 1:100-1:1000. Optimal dilutions/concentrations should be determined by the researcher. Not tested in other applications.
Comment:	Positive Control: Raji , HepG2 , mouse brain , 293T Validation: KO/KD, Orthogonal
Restrictions:	For Research Use only

Handling

Format:	Liquid
Concentration:	1 mg/mL
Buffer:	0.1M Tris-Glycine (pH 7), 20 % Glycerol, 0.01 % Thimerosal
Preservative:	Thimerosal (Merthiolate)
Precaution of Use:	This product contains Thimerosal (Merthiolate): a POISONOUS AND HAZARDOUS SUBSTANCE which should be handled by trained staff only.
Storage:	4 °C,-20 °C

Handling

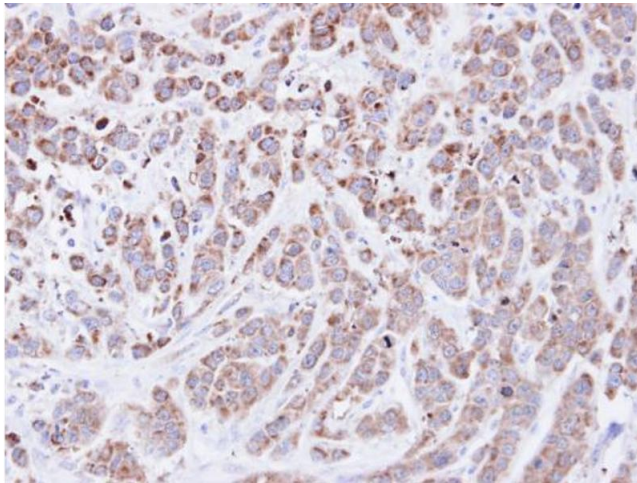
Storage Comment: Store as concentrated solution. Centrifuge briefly prior to opening vial. For short-term storage (1-2 weeks), store at 4°C. For long-term storage, aliquot and store at -20°C or below. Avoid multiple freeze-thaw cycles.

Images



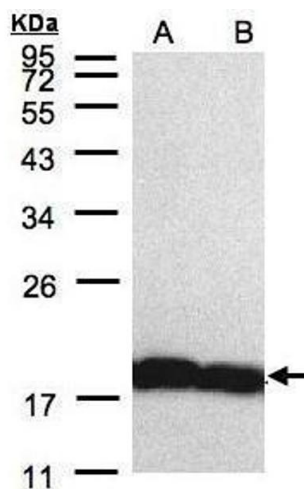
Immunofluorescence

Image 1. ICC/IF Image Immunofluorescence analysis of methanol-fixed HeLa, using Cyclophilin A, antibody at 1:200 dilution.



Immunohistochemistry

Image 2. IHC-P Image Immunohistochemical analysis of paraffin-embedded MDA-MB-468 xenograft, using Cyclophilin A, antibody at 1:500 dilution.



Western Blotting

Image 3. WB Image Sample(30 µg of whole cell lysate) A:H1299 B:HeLa S3, 12% SDS PAGE antibody diluted at 1:5000

Please check the [product details page](#) for more images. Overall 4 images are available for ABIN2855908.