

Datasheet for ABIN2855912
anti-Stathmin 1 antibody (C-Term)

6 Images

[Go to Product page](#)

Overview

Quantity:	100 µL
Target:	Stathmin 1 (STMN1)
Binding Specificity:	C-Term
Reactivity:	Human
Host:	Rabbit
Clonality:	Polyclonal
Conjugate:	This Stathmin 1 antibody is un-conjugated
Application:	Western Blotting (WB), Immunofluorescence (IF), Immunohistochemistry (Paraffin-embedded Sections) (IHC (p)), Immunocytochemistry (ICC), Immunohistochemistry (Frozen Sections) (IHC (fro))

Product Details

Immunogen:	Carrier-protein conjugated synthetic peptide encompassing a sequence within the C-terminus region of human Stathmin 1. The exact sequence is proprietary.
Isotype:	IgG
Cross-Reactivity:	Human, Mouse, Rat
Characteristics:	Rabbit Polyclonal antibody to Stathmin 1 (stathmin 1) Stathmin 1 antibody
Purification:	Purified by antigen-affinity chromatography.
Grade:	KO Validated

Target Details

Target:	Stathmin 1 (STMN1)
Alternative Name:	stathmin 1 (STMN1 Products)
Background:	<p>This gene belongs to the stathmin family of genes. It encodes a ubiquitous cytosolic phosphoprotein proposed to function as an intracellular relay integrating regulatory signals of the cellular environment. The encoded protein is involved in the regulation of the microtubule filament system by destabilizing microtubules. It prevents assembly and promotes disassembly of microtubules. Multiple transcript variants encoding different isoforms have been found for this gene.</p> <p>Cellular Localization: Membrane</p>
Molecular Weight:	17 kDa
Gene ID:	3925
UniProt:	P16949
Pathways:	MAPK Signaling , Microtubule Dynamics

Application Details

Application Notes:	WB: 1:500-1:20000. ICC/IF: 1:100-1:1000. IHC-P: 1:100-1:1000. IHC-Fr: 1:100-1:1000. Optimal dilutions/concentrations should be determined by the researcher. Not tested in other applications.
Comment:	Positive Control: PC-12 , Rat2 , 293T , A431 , H1299 , mouse brain , rat brain , HeLa Validation: KO/KD
Restrictions:	For Research Use only

Handling

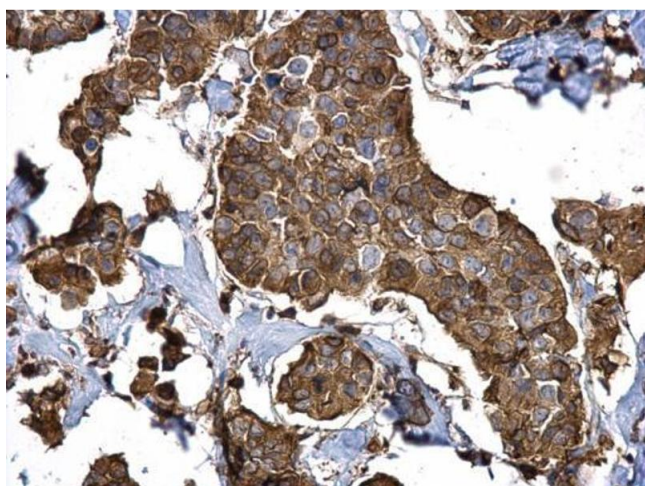
Format:	Liquid
Concentration:	1 mg/mL
Buffer:	1XPBS (pH 7), 10 % Glycerol, 0.01 % Thimerosal
Preservative:	Thimerosal (Merthiolate)
Precaution of Use:	This product contains Thimerosal (Merthiolate): a POISONOUS AND HAZARDOUS SUBSTANCE which should be handled by trained staff only.

Handling

Storage: 4 °C, -20 °C

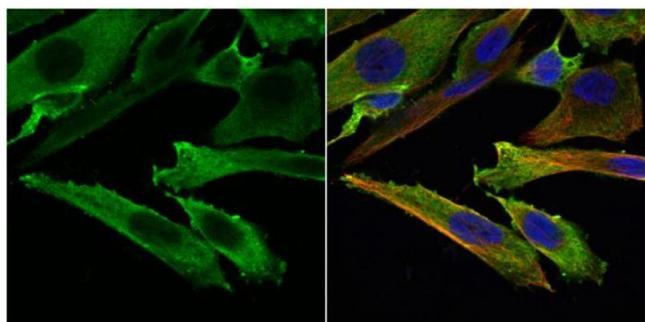
Storage Comment: Store as concentrated solution. Centrifuge briefly prior to opening vial. For short-term storage (1-2 weeks), store at 4°C. For long-term storage, aliquot and store at -20°C or below. Avoid multiple freeze-thaw cycles.

Images



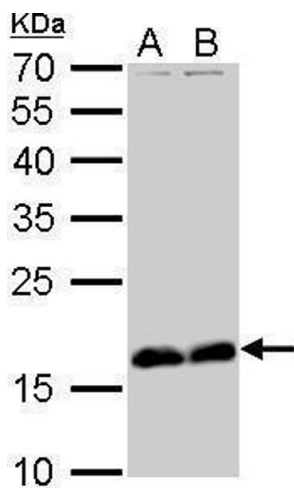
Immunohistochemistry

Image 1. IHC-P Image Stathmin 1 antibody detects Stathmin 1 protein at cytosol on human breast carcinoma by immunohistochemical analysis. Sample: Paraffin-embedded human breast carcinoma. Stathmin 1 antibody, dilution: 1:500.



Immunofluorescence

Image 2. ICC/IF Image Stathmin 1 antibody detects Stathmin 1 protein at cytoplasm by immunofluorescent analysis. Sample: SK-N-SH cells were fixed in 4% paraformaldehyde at RT for 15 min. Green: Stathmin 1 protein stained by Stathmin 1 antibody, diluted at 1:500. Red: alpha Tubulin, a cytoskeleton marker, stained by alpha Tubulin antibody [GT114], diluted at 1:1000. Blue: Hoechst 33342 staining.



Western Blotting

Image 3. WB Image Stathmin 1 antibody detects STMN1 protein by Western blot analysis. A. 30 µg PC-12 whole cell lysate/extract B. 30 µg Rat2 whole cell lysate/extract 12 % SDS-PAGE Stathmin 1 antibody , dilution: 1:2000

Please check the [product details page](#) for more images. Overall 6 images are available for ABIN2855912.