



[Go to Product page](#)

Datasheet for ABIN2855913

anti-MAP4K1 antibody (N-Term)

2 Images

Overview

Quantity:	100 µL
Target:	MAP4K1
Binding Specificity:	N-Term
Reactivity:	Human
Host:	Rabbit
Clonality:	Polyclonal
Conjugate:	This MAP4K1 antibody is un-conjugated
Application:	Western Blotting (WB), Immunohistochemistry (Paraffin-embedded Sections) (IHC (p))

Product Details

Immunogen:	Carrier-protein conjugated synthetic peptide encompassing a sequence within the N-terminus region of human MAP4K1. The exact sequence is proprietary.
Isotype:	IgG
Cross-Reactivity:	Human
Characteristics:	Rabbit Polyclonal antibody to MAP4K1 (mitogen-activated protein kinase kinase kinase kinase 1) MAP4K1 antibody [N1], N-term
Purification:	Purified by antigen-affinity chromatography.

Target Details

Target:	MAP4K1
---------	--------

Target Details

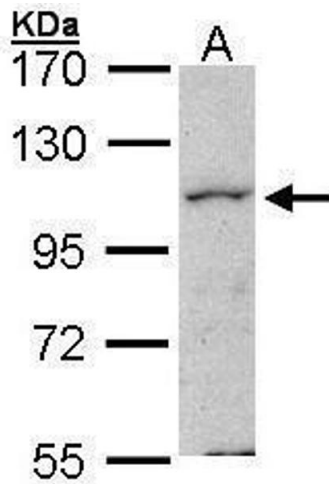
Alternative Name:	mitogen-activated protein kinase kinase kinase kinase 1 (MAP4K1 Products)
Molecular Weight:	91 kDa
Gene ID:	11184
UniProt:	Q92918
Pathways:	TCR Signaling , Signaling of Hepatocyte Growth Factor Receptor

Application Details

Application Notes:	WB: 1:500-1:3000. IHC-P: 1:100-1:1000. Optimal dilutions/concentrations should be determined by the researcher. Not tested in other applications.
Comment:	Positive Control: HeLa
Restrictions:	For Research Use only

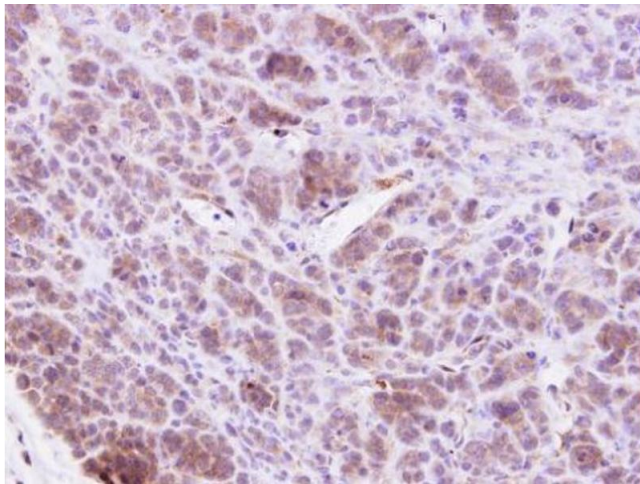
Handling

Format:	Liquid
Concentration:	1 mg/mL
Buffer:	1XPBS (pH 7), 40 % Glycerol, 0.01 % Thimerosal
Preservative:	Thimerosal (Merthiolate)
Precaution of Use:	This product contains Thimerosal (Merthiolate): a POISONOUS AND HAZARDOUS SUBSTANCE which should be handled by trained staff only.
Storage:	4 °C,-20 °C
Storage Comment:	Store as concentrated solution. Centrifuge briefly prior to opening vial. For short-term storage (1-2 weeks), store at 4°C. For long-term storage, aliquot and store at -20°C or below. Avoid multiple freeze-thaw cycles.



Western Blotting

Image 1. WB Image Sample (30 ug of whole cell lysate) A: HeLa 7.5% SDS PAGE antibody diluted at 1:1000



Immunohistochemistry

Image 2. IHC-P Image MAP4K1 antibody [N1], N-term detects MAP4K1 protein at cytosol on BT438 xenograft by immunohistochemical analysis. Sample: Paraffin-embedded BT438 xenograft. MAP4K1 antibody [N1], N-term , dilution: 1:500.