

Datasheet for ABIN2855920
anti-SOCS4 antibody (C-Term)

3 Images

[Go to Product page](#)

Overview

Quantity:	100 µL
Target:	SOCS4
Binding Specificity:	C-Term
Reactivity:	Human
Host:	Rabbit
Clonality:	Polyclonal
Conjugate:	This SOCS4 antibody is un-conjugated
Application:	Western Blotting (WB), Immunofluorescence (IF), Immunohistochemistry (Paraffin-embedded Sections) (IHC (p)), Immunocytochemistry (ICC)

Product Details

Immunogen:	Carrier-protein conjugated synthetic peptide encompassing a sequence within the C-terminus region of human SOCS4. The exact sequence is proprietary.
Isotype:	IgG
Cross-Reactivity:	Human
Characteristics:	Rabbit polyclonal antibody to SOCS4 (suppressor of cytokine signaling 4) SOCS4 antibody [C3], C-term
Purification:	Purified by antigen-affinity chromatography.

Target Details

Target:	SOCS4
---------	-------

Target Details

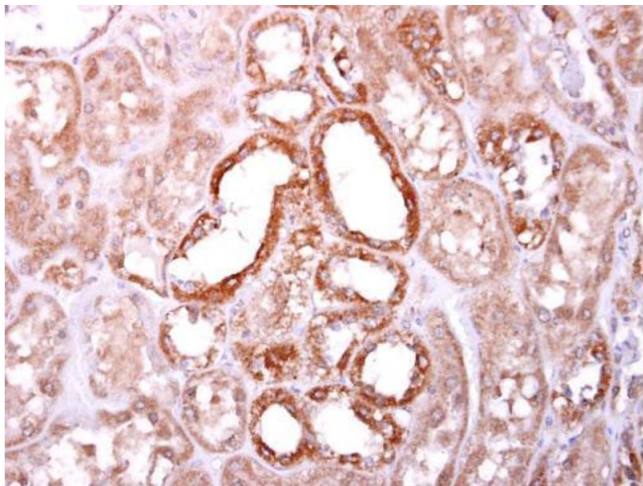
Alternative Name:	suppressor of cytokine signaling 4 (SOCS4 Products)
Background:	The protein encoded by this gene contains a SH2 domain and a SOCS BOX domain. The protein thus belongs to the suppressor of cytokine signaling (SOCS), also known as STAT-induced STAT inhibitor (SSI), protein family. SOCS family members are known to be cytokine-inducible negative regulators of cytokine signaling. Two alternatively spliced transcript variants encoding the same protein have been found for this gene.
Molecular Weight:	51 kDa
Gene ID:	122809
UniProt:	Q8WXH5
Pathways:	JAK-STAT Signaling , EGFR Signaling Pathway

Application Details

Application Notes:	WB: 1:500-1:3000. ICC/IF: 1:100-1:1000. IHC-P: 1:100-1:1000. Optimal dilutions/concentrations should be determined by the researcher. Not tested in other applications.
Comment:	Positive Control: HeLaS3
Restrictions:	For Research Use only

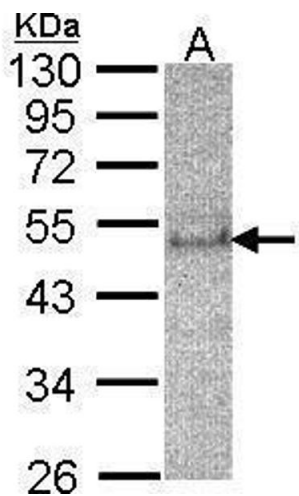
Handling

Format:	Liquid
Concentration:	1 mg/mL
Buffer:	1XPBS (pH 7), 40 % Glycerol, 0.01 % Thimerosal
Preservative:	Thimerosal (Merthiolate)
Precaution of Use:	This product contains Thimerosal (Merthiolate): a POISONOUS AND HAZARDOUS SUBSTANCE which should be handled by trained staff only.
Storage:	4 °C,-20 °C
Storage Comment:	Store as concentrated solution. Centrifuge briefly prior to opening vial. For short-term storage (1-2 weeks), store at 4°C. For long-term storage, aliquot and store at -20°C or below. Avoid multiple freeze-thaw cycles.



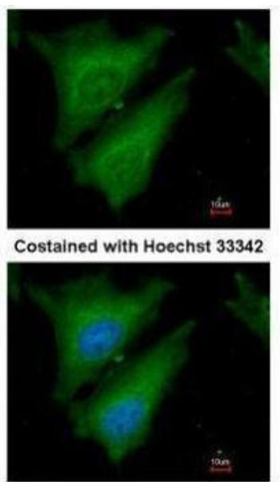
Immunohistochemistry

Image 1. IHC-P Image SOCS4 antibody [C3], C-term detects SOCS4 protein at cytoplasm on human normal kidney by immunohistochemical analysis. Sample: Paraffin-embedded human normal kidney. SOCS4 antibody [C3], C-term , diluted at 1:500.



Western Blotting

Image 2. WB Image Sample(30 µg of whole cell lysate) A:HeLa S3, 12% SDS PAGE antibody diluted at 1:200



Immunofluorescence

Image 3. ICC/IF Image Immunofluorescence analysis of paraformaldehyde-fixed HeLa, using SOCS4, antibody at 1:200 dilution.