

Datasheet for ABIN2855926  
**anti-MAGI2 antibody (C-Term)**[Go to Product page](#)

## 1 Image

## Overview

Quantity:	100 µL
Target:	MAGI2
Binding Specificity:	C-Term
Reactivity:	Human
Host:	Rabbit
Clonality:	Polyclonal
Conjugate:	This MAGI2 antibody is un-conjugated
Application:	Western Blotting (WB)

## Product Details

Immunogen:	Carrier-protein conjugated synthetic peptide encompassing a sequence within the C-terminus region of human MAGI-2. The exact sequence is proprietary.
Isotype:	IgG
Cross-Reactivity:	Human
Characteristics:	Rabbit polyclonal antibody to MAGI-2 (membrane associated guanylate kinase, WW and PDZ domain containing 2) MAGI-2 antibody [C3], C-term
Purification:	Purified by antigen-affinity chromatography.

## Target Details

Target:	MAGI2
---------	-------

## Target Details

Alternative Name:	membrane associated guanylate kinase, WW and PDZ domain containing 2 ( <a href="#">MAGI2 Products</a> )
Background:	<p>The protein encoded by this gene interacts with atrophin-1. Atrophin-1 contains a polyglutamine repeat, expansion of which is responsible for dentatorubral and pallidoluysian atrophy. This encoded protein is characterized by two WW domains, a guanylate kinase-like domain, and multiple PDZ domains. It has structural similarity to the membrane-associated guanylate kinase homologue (MAGUK) family.</p> <p>Cellular Localization: Cell junction , synapse , synaptosome (By similarity) , Cell membrane, Peripheral membrane protein (By similarity)</p>
Molecular Weight:	159 kDa
Gene ID:	9863
UniProt:	<a href="#">Q86UL8</a>
Pathways:	<a href="#">Neurotrophin Signaling Pathway</a>

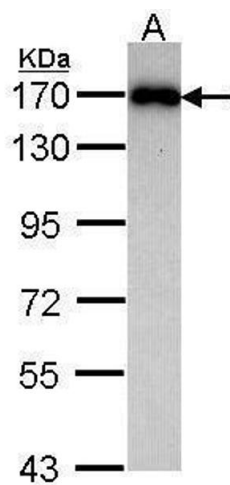
## Application Details

Application Notes:	WB: 1:500-1:3000. Optimal dilutions/concentrations should be determined by the researcher. Not tested in other applications.
Comment:	Positive Control: Raji
Restrictions:	For Research Use only

## Handling

Format:	Liquid
Concentration:	1 mg/mL
Buffer:	1XPBS ( pH 7), 10 % Glycerol, 0.01 % Thimerosal
Preservative:	Thimerosal (Merthiolate)
Precaution of Use:	This product contains Thimerosal (Merthiolate): a POISONOUS AND HAZARDOUS SUBSTANCE which should be handled by trained staff only.
Storage:	4 °C,-20 °C
Storage Comment:	Store as concentrated solution. Centrifuge briefly prior to opening vial. For short-term storage (1-2 weeks), store at 4°C. For long-term storage, aliquot and store at -20°C or below. Avoid

multiple freeze-thaw cycles.



Western Blotting

**Image 1.** WB Image Sample (30 ug of whole cell lysate) A:  
Raji 7.5% SDS PAGE MAGI-2 antibody antibody diluted at  
1:1000