

Datasheet for ABIN2855933
anti-SSX2IP antibody (C-Term)[Go to Product page](#)

2 Images

Overview

Quantity:	100 µL
Target:	SSX2IP
Binding Specificity:	C-Term
Reactivity:	Human
Host:	Rabbit
Clonality:	Polyclonal
Conjugate:	This SSX2IP antibody is un-conjugated
Application:	Western Blotting (WB)

Product Details

Immunogen:	Carrier-protein conjugated synthetic peptide encompassing a sequence within the C-terminus region of human ADIP. The exact sequence is proprietary.
Isotype:	IgG
Cross-Reactivity:	Rhesus Monkey, Cow (Bovine)
Cross-Reactivity (Details):	Rhesus Monkey (92 %), Bovine (92 %)
Characteristics:	Rabbit polyclonal antibody to ADIP (synovial sarcoma, X breakpoint 2 interacting protein) ADIP antibody [C3], C-term
Purification:	Purified by antigen-affinity chromatography.

Target Details

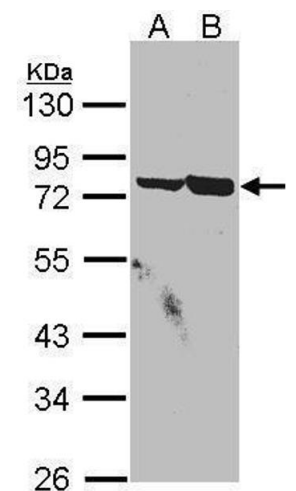
Target:	SSX2IP
Alternative Name:	ADIP (SSX2IP Products)
Background:	<p>This gene encodes a protein that binds the cancer-testis antigen Synovial Sarcoma X breakpoint 2 protein. The encoded protein may regulate the activity of Synovial Sarcoma X breakpoint 2 protein in malignant cells. Alternate splicing results in multiple transcript variants. A pseudogene of this gene is found on chromosome 3.</p> <p>Cellular Localization: Cell junction , adherens junction , Nucleus</p>
Molecular Weight:	71 kDa
Gene ID:	117178

Application Details

Application Notes:	<p>Suggested dilution Reference Western blot 1:500-1:3000* Not tested in other applications.</p> <p>*Optimal dilutions/concentrations should be determined by the researcher.Suggested dilutionReferenceWestern blot1:500-1:3000*</p>
Comment:	Positive Control: A431 , H1299 , HepG2 , 293T , HeLa
Restrictions:	For Research Use only

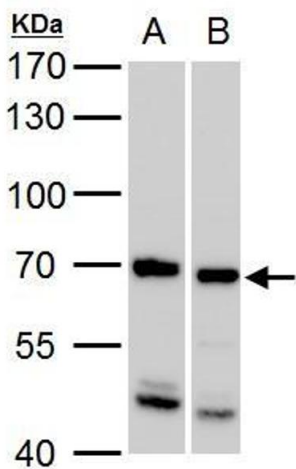
Handling

Format:	Liquid
Concentration:	1 mg/mL
Buffer:	1XPBS, 40 % Glycerol (pH 7). 0.01 % Thimerosal was added as a preservative.
Preservative:	Thimerosal (Merthiolate)
Precaution of Use:	This product contains Thimerosal (Merthiolate): a POISONOUS AND HAZARDOUS SUBSTANCE which should be handled by trained staff only.
Storage:	-20 °C
Storage Comment:	Keep as concentrated solution. Aliquot and store at -20°C or below. Avoid multiple freeze-thaw cycles.



Western Blotting

Image 1. WB Image Sample(30 µg of whole cell lysate)
A:A431, B:H1299 10% SDS PAGE antibody diluted at 1:1500



Western Blotting

Image 2. WB Image ADIP antibody [C3], C-term detects ADIP protein by western blot analysis. A. 30 µg 293T whole cell lysate/extract B. 30 µg HeLa whole cell lysate/extract 7.5 % SDS-PAGE ADIP antibody [C3], C-term , dilution: 1:1000