



[Go to Product page](#)

Datasheet for ABIN2855943
anti-VPS29 antibody (C-Term)

1 Image

Overview

Quantity:	100 µL
Target:	VPS29
Binding Specificity:	C-Term
Reactivity:	Human
Host:	Rabbit
Clonality:	Polyclonal
Conjugate:	This VPS29 antibody is un-conjugated
Application:	Western Blotting (WB)

Product Details

Immunogen:	Carrier-protein conjugated synthetic peptide encompassing a sequence within the C-terminus region of human VPS29. The exact sequence is proprietary.
Isotype:	IgG
Cross-Reactivity:	Mouse (Murine), Rat (Rattus), Zebrafish (Danio rerio), Xenopus laevis, Xenopus tropicalis, Chicken, Cow (Bovine)
Cross-Reactivity (Details):	Mouse (100 %), Rat (100 %), Zebrafish (100 %), Xenopus laevis (100 %), Xenopus Tropicalis (100 %), Chicken (100 %), Bovine (100 %)
Characteristics:	Rabbit polyclonal antibody to VPS29 (vacuolar protein sorting 29 homolog (S. cerevisiae)) VPS29 antibody [C1C3]
Purification:	Purified by antigen-affinity chromatography.

Target Details

Target:	VPS29
Alternative Name:	VPS29 (VPS29 Products)
Background:	<p>This gene belongs to a group of vacuolar protein sorting (VPS) genes that, when functionally impaired, disrupt the efficient delivery of vacuolar hydrolases. The protein encoded by this gene is a component of a large multimeric complex, termed the retromer complex, which is involved in retrograde transport of proteins from endosomes to the trans-Golgi network. This VPS protein may be involved in the formation of the inner shell of the retromer coat for retrograde vesicles leaving the prevacuolar compartment. Alternative splice variants encoding different isoforms, and usage of multiple polyadenylation sites have been found for this gene.</p> <p>Cellular Localization: Cytoplasm , Membrane, Peripheral membrane protein , Endosome membrane, Peripheral membrane protein</p>
Molecular Weight:	21 kDa
Gene ID:	51699

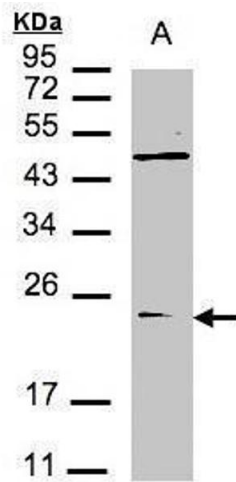
Application Details

Application Notes:	<p>Suggested dilution Reference Western blot 1:500-1:3000* Not tested in other applications. *Optimal dilutions/concentrations should be determined by the researcher.Suggested dilutionReferenceWestern blot1:500-1:3000*</p>
Comment:	Positive Control: 293T
Restrictions:	For Research Use only

Handling

Format:	Liquid
Concentration:	1 mg/mL
Buffer:	1XPBS, 40 % Glycerol (pH 7). 0.01 % Thimerosal was added as a preservative.
Preservative:	Thimerosal (Merthiolate)
Precaution of Use:	This product contains Thimerosal (Merthiolate): a POISONOUS AND HAZARDOUS SUBSTANCE which should be handled by trained staff only.
Storage:	-20 °C
Storage Comment:	Keep as concentrated solution. Aliquot and store at -20°C or below. Avoid multiple freeze-thaw

cycles.



Western Blotting

Image 1. WB Image Sample(30 µg of whole cell lysate)
A:293T 12% SDS PAGE antibody diluted at 1:1500