

Datasheet for ABIN2855949

**anti-ARF3 antibody**

## 4 Images

[Go to Product page](#)

## Overview

Quantity:	100 µL
Target:	ARF3
Reactivity:	Human
Host:	Rabbit
Clonality:	Polyclonal
Conjugate:	This ARF3 antibody is un-conjugated
Application:	Western Blotting (WB), Immunofluorescence (IF), Immunocytochemistry (ICC), Immunohistochemistry (Paraffin-embedded Sections) (IHC (p))

## Product Details

Immunogen:	Carrier-protein conjugated synthetic peptide encompassing a sequence within the center region of human ARF3. The exact sequence is proprietary.
Isotype:	IgG
Cross-Reactivity:	Human, Mouse
Characteristics:	Rabbit Polyclonal antibody to ARF3 (ADP-ribosylation factor 3) ARF3 antibody
Purification:	Purified by antigen-affinity chromatography.

## Target Details

Target:	ARF3
Alternative Name:	ADP ribosylation factor 3 ( <a href="#">ARF3 Products</a> )

## Target Details

**Background:** ADP-ribosylation factor 3 (ARF3) is a member of the human ARF gene family. These genes encode small guanine nucleotide-binding proteins that stimulate the ADP-ribosyltransferase activity of cholera toxin and play a role in vesicular trafficking and as activators of phospholipase D. The gene products include 6 ARF proteins and 11 ARF-like proteins and constitute 1 family of the RAS superfamily. The ARF proteins are categorized as class I (ARF1, ARF2, and ARF3), class II (ARF4 and ARF5) and class III (ARF6) and members of each class share a common gene organization. The ARF3 gene contains five exons and four introns.

Cellular Localization: Golgi apparatus

**Molecular Weight:** 21 kDa

**Gene ID:** 377

**UniProt:** [P61204](#)

**Pathways:** [Inositol Metabolic Process](#), [Cellular Glucan Metabolic Process](#)

## Application Details

**Application Notes:** WB: 1:500-1:3000. ICC/IF: 1:100-1:1000. IHC-P: 1:100-1:1000. Optimal dilutions/concentrations should be determined by the researcher. Not tested in other applications.

**Comment:** Positive Control: Raji

**Restrictions:** For Research Use only

## Handling

**Format:** Liquid

**Concentration:** 0.57 mg/mL

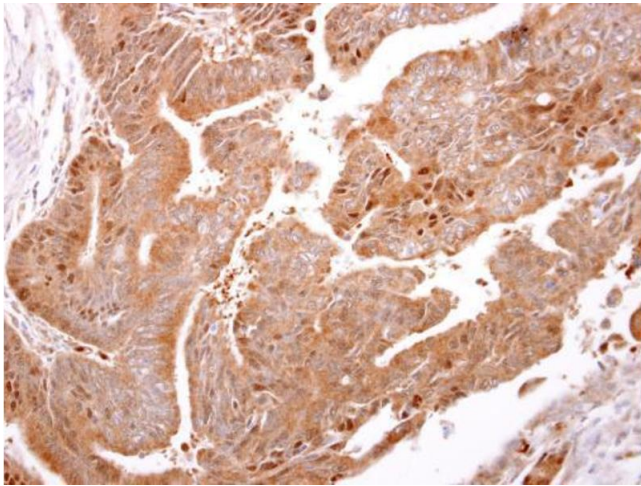
**Buffer:** 0.1M Tris-Glycine ( pH 7), 20 % Glycerol, 0.01 % Thimerosal

**Preservative:** Thimerosal (Merthiolate)

**Precaution of Use:** This product contains Thimerosal (Merthiolate): a POISONOUS AND HAZARDOUS SUBSTANCE which should be handled by trained staff only.

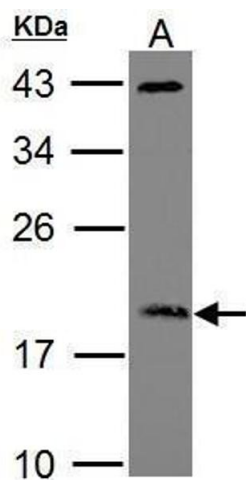
**Storage:** 4 °C, -20 °C

**Storage Comment:** Store as concentrated solution. Centrifuge briefly prior to opening vial. For short-term storage (1-2 weeks), store at 4°C. For long-term storage, aliquot and store at -20°C or below. Avoid multiple freeze-thaw cycles.



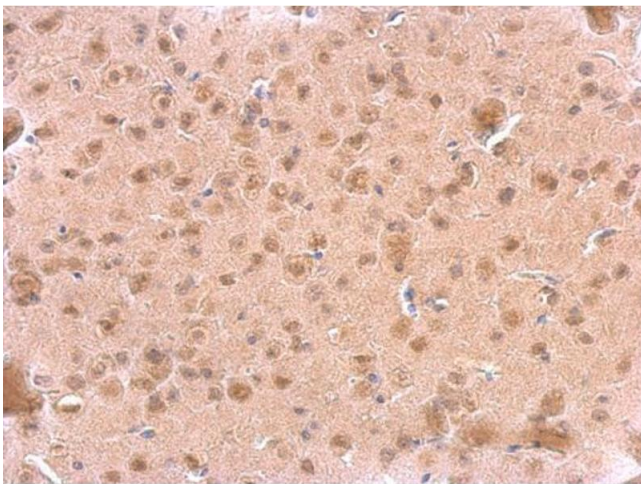
#### Immunohistochemistry

**Image 1.** IHC-P Image ARF3 antibody detects ARF3 protein at cytosol on human colon carcinoma by immunohistochemical analysis. Sample: Paraffin-embedded human colon carcinoma. ARF3 antibody , dilution: 1:500.



#### Western Blotting

**Image 2.** WB Image Sample (30 ug of whole cell lysate) A: Raji 12% SDS PAGE ADP-ribosylation factor 3 antibody antibody diluted at 1:1000



#### Immunohistochemistry

**Image 3.** IHC-P Image ARF3 antibody detects ARF3 protein at cytosol on mouse fore brain by immunohistochemical analysis. Sample: Paraffin-embedded mouse fore brain. ARF3 antibody , dilution: 1:500.

Please check the [product details page](#) for more images. Overall 4 images are available for ABIN2855949.