

Datasheet for ABIN2855951
anti-SIPA1 antibody (C-Term)[Go to Product page](#)

4 Images

Overview

Quantity:	100 µL
Target:	SIPA1
Binding Specificity:	C-Term
Reactivity:	Human
Host:	Rabbit
Clonality:	Polyclonal
Conjugate:	This SIPA1 antibody is un-conjugated
Application:	Western Blotting (WB), Immunohistochemistry (Paraffin-embedded Sections) (IHC (p)), Immunofluorescence (IF), Immunocytochemistry (ICC)

Product Details

Immunogen:	Carrier-protein conjugated synthetic peptide encompassing a sequence within the C-terminus region of human SIPA1. The exact sequence is proprietary.
Isotype:	IgG
Cross-Reactivity:	Human, Mouse
Characteristics:	Rabbit Polyclonal antibody to SIPA1 (signal-induced proliferation-associated 1) SIPA1 antibody [C3], C-term
Purification:	Purified by antigen-affinity chromatography.

Target Details

Target:	SIPA1
---------	-------

Target Details

Alternative Name:	signal-induced proliferation-associated 1 (SIPA1 Products)
Background:	<p>The product of this gene is a mitogen induced GTPase activating protein (GAP). It exhibits a specific GAP activity for Ras-related regulatory proteins Rap1 and Rap2, but not for Ran or other small GTPases. This protein may also hamper mitogen-induced cell cycle progression when abnormally or prematurely expressed. It is localized to the perinuclear region. Two alternatively spliced variants encoding the same isoform have been characterized to date.</p> <p>Cellular Localization: Nucleus , Cytoplasm , perinuclear region , Endomembrane system, Peripheral membrane protein</p>
Molecular Weight:	112 kDa
Gene ID:	6494
UniProt:	Q96FS4
Pathways:	Response to Water Deprivation

Application Details

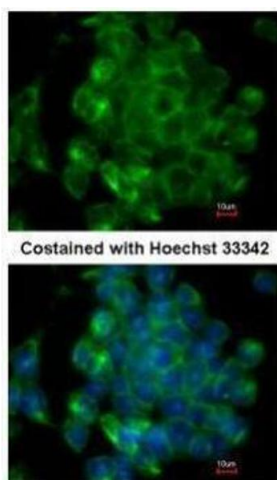
Application Notes:	WB: 1:500-1:3000. ICC/IF: 1:100-1:1000. IHC-P: 1:100-1:1000. Optimal dilutions/concentrations should be determined by the researcher. Not tested in other applications.
Comment:	Positive Control: SIPA1 transfected 293T
Restrictions:	For Research Use only

Handling

Format:	Liquid
Concentration:	1 mg/mL
Buffer:	1XPBS (pH 7), 40 % Glycerol, 0.01 % Thimerosal
Preservative:	Thimerosal (Merthiolate)
Precaution of Use:	This product contains Thimerosal (Merthiolate): a POISONOUS AND HAZARDOUS SUBSTANCE which should be handled by trained staff only.
Storage:	4 °C,-20 °C
Storage Comment:	Store as concentrated solution. Centrifuge briefly prior to opening vial. For short-term storage (1-2 weeks), store at 4°C. For long-term storage, aliquot and store at -20°C or below. Avoid

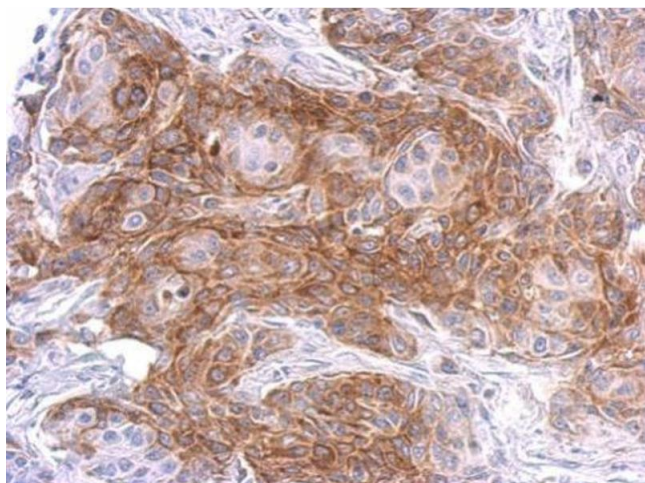
multiple freeze-thaw cycles.

Images



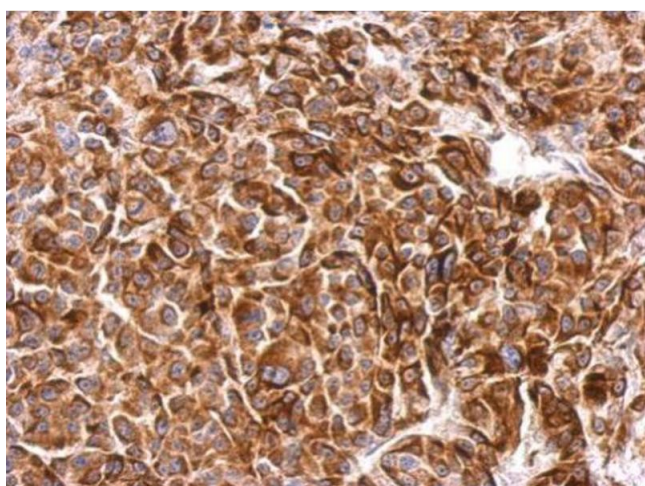
Immunofluorescence

Image 1. ICC/IF Image Immunofluorescence analysis of methanol-fixed mouse ESC, using SIPA1, antibody at 1:200 dilution.



Immunohistochemistry

Image 2. IHC-P Image SIPA1 antibody [C3], C-term detects SIPA1 protein at weak membrane and cytosol on Cal27 xenograft by immunohistochemical analysis. Sample: Paraffin-embedded Cal27 xenograft. SIPA1 antibody [C3], C-term, dilution: 1:500.



Immunohistochemistry

Image 3. IHC-P Image SIPA1 antibody [C3], C-term detects SIPA1 protein at weak membrane and cytosol on HBL435 xenograft by immunohistochemical analysis. Sample: Paraffin-embedded HBL435 xenograft. SIPA1 antibody [C3], C-term, dilution: 1:500.

Please check the [product details page](#) for more images. Overall 4 images are available for ABIN2855951.