



Datasheet for ABIN2855952
anti-Asporin antibody



[Go to Product page](#)

2 Images

Overview

Quantity:	100 µL
Target:	Asporin (ASPN)
Reactivity:	Human
Host:	Rabbit
Clonality:	Polyclonal
Conjugate:	This Asporin antibody is un-conjugated
Application:	Western Blotting (WB), Immunofluorescence (IF), Immunocytochemistry (ICC)

Product Details

Immunogen:	Carrier-protein conjugated synthetic peptide encompassing a sequence within the center region of human Asporin. The exact sequence is proprietary.
Isotype:	IgG
Cross-Reactivity:	Human, Mouse, Rat
Characteristics:	Rabbit Polyclonal antibody to Asporin (asporin) Asporin antibody [N3C1], Internal
Purification:	Purified by antigen-affinity chromatography.

Target Details

Target:	Asporin (ASPN)
Alternative Name:	asporin (ASPN Products)

Target Details

Background: ASPN belongs to a family of leucine-rich repeat (LRR) proteins associated with the cartilage matrix. The name asporin reflects the unique aspartate-rich N terminus and the overall similarity to decorin (MIM 125255) (Lorenzo et al., 2001 [PubMed 11152692]).[supplied by OMIM]

Molecular Weight: 43 kDa

Gene ID: 54829

UniProt: [Q9BXN1](#)

Application Details

Application Notes: WB: 1:500-1:3000. ICC/IF: 1:100-1:1000. Optimal dilutions/concentrations should be determined by the researcher. Not tested in other applications.

Comment: Positive Control: Mouse liver , rat heart

Restrictions: For Research Use only

Handling

Format: Liquid

Concentration: 0.43 mg/mL

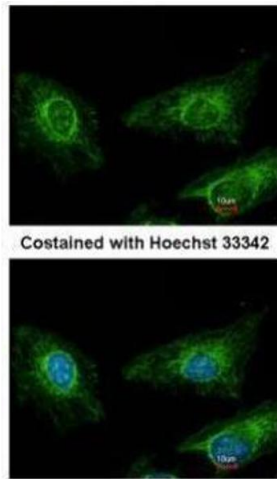
Buffer: 1XPBS (pH 7), 10 % Glycerol, 0.01 % Thimerosal

Preservative: Thimerosal (Merthiolate)

Precaution of Use: This product contains Thimerosal (Merthiolate): a POISONOUS AND HAZARDOUS SUBSTANCE which should be handled by trained staff only.

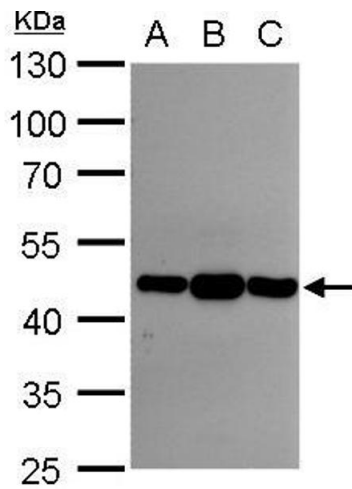
Storage: 4 °C,-20 °C

Storage Comment: Store as concentrated solution. Centrifuge briefly prior to opening vial. For short-term storage (1-2 weeks), store at 4°C. For long-term storage, aliquot and store at -20°C or below. Avoid multiple freeze-thaw cycles.



Immunofluorescence

Image 1. ICC/IF Image Immunofluorescence analysis of methanol-fixed HeLa, using Asporin, antibody at 1:200 dilution.



Western Blotting

Image 2. WB Image Asporin antibody [N3C1], Internal detects Asporin protein by western blot analysis. A. 30 µg A549 whole cell lysate/extract B. 30 µg H1299 whole cell lysate/extract C. 30 µg HCT116 whole cell lysate/extract 10 % SDS-PAGE Asporin antibody [N3C1], Internal , dilution: 1:1000