

Datasheet for ABIN2855957
anti-NR2F1 antibody (N-Term)

3 Images

[Go to Product page](#)

Overview

Quantity:	100 µL
Target:	NR2F1
Binding Specificity:	N-Term
Reactivity:	Human
Host:	Rabbit
Clonality:	Polyclonal
Conjugate:	This NR2F1 antibody is un-conjugated
Application:	Western Blotting (WB), Immunocytochemistry (ICC), Immunohistochemistry (Paraffin-embedded Sections) (IHC (p)), Immunofluorescence (IF)

Product Details

Immunogen:	Carrier-protein conjugated synthetic peptide encompassing a sequence within the N-terminus region of human COUP TF1. The exact sequence is proprietary.
Isotype:	IgG
Cross-Reactivity:	Human, Mouse
Characteristics:	Rabbit Polyclonal antibody to COUP TF1 (nuclear receptor subfamily 2, group F, member 1) COUP TF1 antibody [N1], N-term
Purification:	Purified by antigen-affinity chromatography.

Target Details

Target:	NR2F1
---------	-------

Target Details

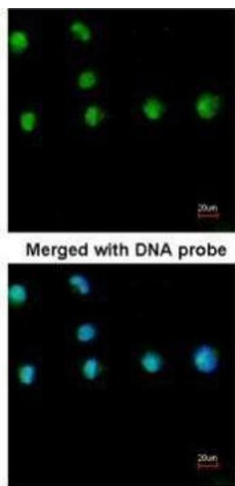
Alternative Name:	nuclear receptor subfamily 2 group F member 1 (NR2F1 Products)
Background:	Coup (chicken ovalbumin upstream promoter) transcription factor binds to the ovalbumin promoter and, in conjunction with another protein (S300-II) stimulates initiation of transcription. Binds to both direct repeats and palindromes of the 5'-AGGTCA-3' motif. Represses transcriptional activity of LHCG.
Molecular Weight:	46 kDa
Gene ID:	7025
UniProt:	P10589
Pathways:	Nuclear Receptor Transcription Pathway , Steroid Hormone Mediated Signaling Pathway

Application Details

Application Notes:	WB: 1:500-1:3000. ICC/IF: 1:100-1:1000. IHC-P: 1:100-1:1000. Optimal dilutions/concentrations should be determined by the researcher. Not tested in other applications.
Comment:	Positive Control: NR2F1-transfected 293T
Restrictions:	For Research Use only

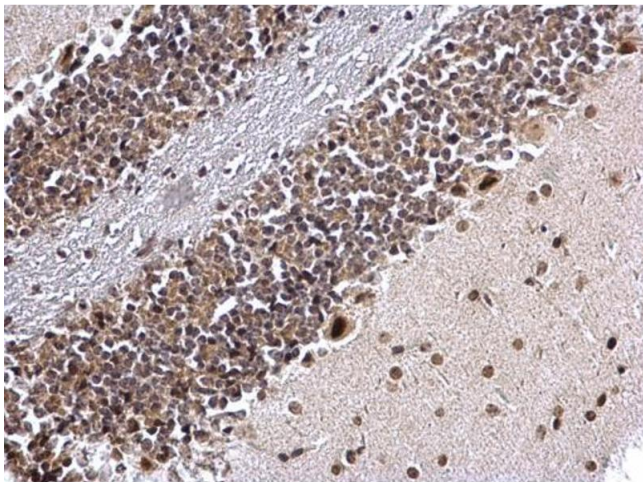
Handling

Format:	Liquid
Concentration:	1 mg/mL
Buffer:	1XPBS (pH 7), 10 % Glycerol, 0.01 % Thimerosal
Preservative:	Thimerosal (Merthiolate)
Precaution of Use:	This product contains Thimerosal (Merthiolate): a POISONOUS AND HAZARDOUS SUBSTANCE which should be handled by trained staff only.
Storage:	4 °C,-20 °C
Storage Comment:	Store as concentrated solution. Centrifuge briefly prior to opening vial. For short-term storage (1-2 weeks), store at 4°C. For long-term storage, aliquot and store at -20°C or below. Avoid multiple freeze-thaw cycles.



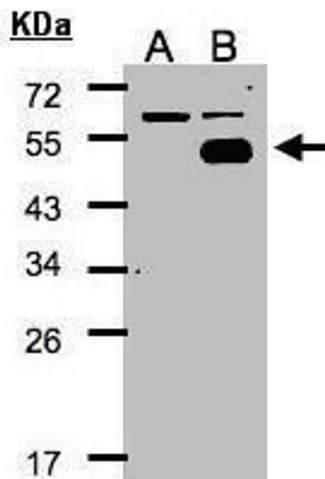
Immunofluorescence

Image 1. ICC/IF Image Immunofluorescence analysis of paraformaldehyde-fixed HeLa, using COUP TF1 , antibody at 1:200 dilution.



Immunohistochemistry

Image 2. IHC-P Image COUP TF1 antibody [N1], N-term detects COUP TF1 protein at nucleus on mouse hind brain by immunohistochemical analysis. Sample: Paraffin-embedded mouse hind brain. COUP TF1 antibody [N1], N-term , diluted at 1:500.



Western Blotting

Image 3. WB Image Western Blot analysis of NR2F1 expression in transfected 293T cell line by NR2F1 polyclonal antibody. A: Non-transfected lysate. B: NR2F1 transfected lysate. 12% SDS PAGE antibody diluted at 1:500