



Datasheet for ABIN2855960
anti-HSPB8 antibody (C-Term)



[Go to Product page](#)

3 Images

Overview

Quantity:	100 µL
Target:	HSPB8
Binding Specificity:	C-Term
Reactivity:	Human
Host:	Rabbit
Clonality:	Polyclonal
Conjugate:	This HSPB8 antibody is un-conjugated
Application:	Western Blotting (WB), Immunofluorescence (IF), Immunocytochemistry (ICC), Immunohistochemistry (Paraffin-embedded Sections) (IHC (p))

Product Details

Immunogen:	Carrier-protein conjugated synthetic peptide encompassing a sequence within the C-terminus region of human HSP22. The exact sequence is proprietary.
Isotype:	IgG
Cross-Reactivity:	Mouse (Murine), Rat (Rattus), Dog (Canine), Rhesus Monkey, Cow (Bovine)
Cross-Reactivity (Details):	Mouse (85 %), Rat (85 %), Dog (100 %), Rhesus Monkey (100 %), Bovine (92 %)
Characteristics:	Rabbit Polyclonal antibody to HSP22 (heat shock 22 kDa protein 8) HSP22 antibody [C2C3], C-term
Purification:	Purified by antigen-affinity chromatography.

Target Details

Target:	HSPB8
Alternative Name:	HSP22 (HSPB8 Products)
Background:	The protein encoded by this gene belongs to the superfamily of small heat-shock proteins containing a conservative alpha-crystallin domain at the C-terminal part of the molecule. The expression of this gene is induced by estrogen in estrogen receptor-positive breast cancer cells, and this protein also functions as a chaperone in association with Bag3, a stimulator of macroautophagy. Thus, this gene appears to be involved in regulation of cell proliferation, apoptosis, and carcinogenesis, and mutations in this gene have been associated with different neuromuscular diseases, including Charcot-Marie-Tooth disease.
Molecular Weight:	22 kDa
Gene ID:	26353

Application Details

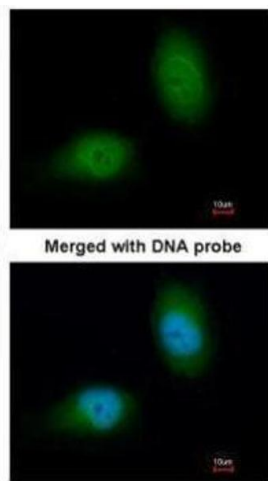
Application Notes:	Suggested dilution Reference ICC/IF 1:100-1:1000* IHC (Formalin-fixed paraffin-embedded sections) 1:100-1:1000* Western blot 1:500-1:3000* Not tested in other applications. *Optimal dilutions/concentrations should be determined by the researcher.Suggested dilutionReference ICC/IF1:100-1:1000* IHC (Formalin-fixed paraffin-embedded sections)1:100-1:1000* Western blot1:500-1:3000*
Comment:	Positive Control: 293T , A431 , H1299 , HeLaS3 , HepG2 , Molt-4 , Raji
Restrictions:	For Research Use only

Handling

Format:	Liquid
Concentration:	1 mg/mL
Buffer:	0.1M Tris, 0.1M Glycine, 10 % Glycerol (pH 7). 0.01 % Thimerosal was added as a preservative.
Preservative:	Thimerosal (Merthiolate)
Precaution of Use:	This product contains Thimerosal (Merthiolate): a POISONOUS AND HAZARDOUS SUBSTANCE which should be handled by trained staff only.
Storage:	-20 °C
Storage Comment:	Keep as concentrated solution. Aliquot and store at -20°C or below. Avoid multiple freeze-thaw

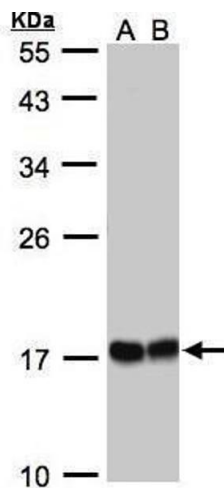
cycles.

Images



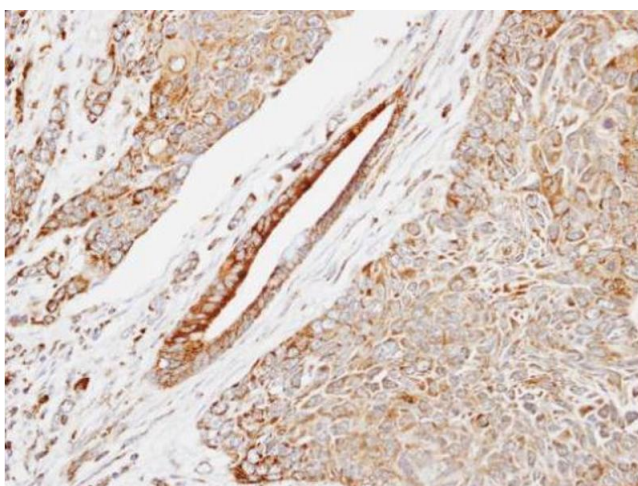
Immunofluorescence

Image 1. ICC/IF Image Immunofluorescence analysis of paraformaldehyde-fixed HeLa, using HSPB8, antibody at 1:200 dilution.



Western Blotting

Image 2. WB Image Sample(30 ug whole cell lysate) A:293T whole cell lysate B:A431, 12% SDS PAGE antibody diluted at 1:1000



Immunohistochemistry

Image 3. IHC-P Image Immunohistochemical analysis of paraffin-embedded human lung SCC, using HSP22, antibody at 1:500 dilution.