

Datasheet for ABIN2855961
anti-AFT7 antibody (C-Term)

2 Images

[Go to Product page](#)

Overview

Quantity:	100 µL
Target:	AFT7
Binding Specificity:	C-Term
Reactivity:	Human
Host:	Rabbit
Clonality:	Polyclonal
Conjugate:	This AFT7 antibody is un-conjugated
Application:	Western Blotting (WB), Immunofluorescence (IF), Immunocytochemistry (ICC)

Product Details

Immunogen:	Carrier-protein conjugated synthetic peptide encompassing a sequence within the C-terminus region of human ATF7. The exact sequence is proprietary.
Isotype:	IgG
Cross-Reactivity:	Human
Characteristics:	Rabbit Polyclonal antibody to ATF7 (activating transcription factor 7) ATF7 antibody [C3], C-term
Purification:	Purified by antigen-affinity chromatography.

Target Details

Target:	AFT7
---------	------

Target Details

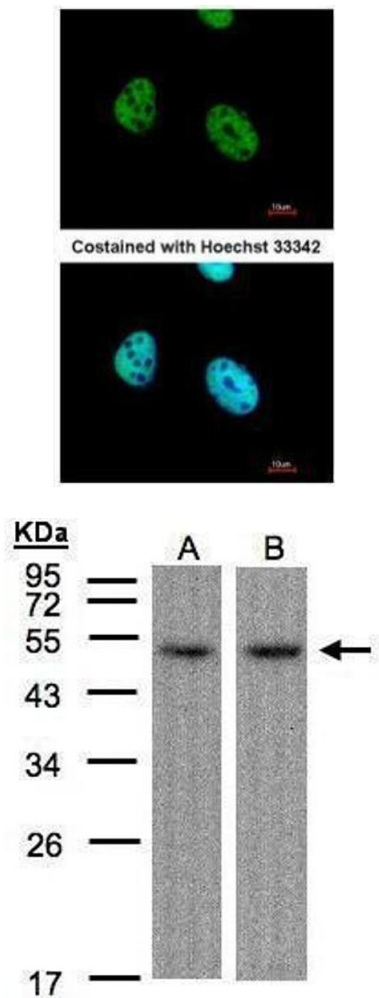
Alternative Name:	activating transcription factor 7 (AFT7 Products)
Background:	Cellular Localization: Nucleus
Molecular Weight:	53 kDa
Gene ID:	11016
UniProt:	P17544

Application Details

Application Notes:	WB: 1:500-1:3000. ICC/IF: 1:100-1:1000. Optimal dilutions/concentrations should be determined by the researcher. Not tested in other applications.
Comment:	Positive Control: HepG2 , Raji
Restrictions:	For Research Use only

Handling

Format:	Liquid
Concentration:	0.88 mg/mL
Buffer:	1XPBS (pH 7), 10 % Glycerol, 0.01 % Thimerosal
Preservative:	Thimerosal (Merthiolate)
Precaution of Use:	This product contains Thimerosal (Merthiolate): a POISONOUS AND HAZARDOUS SUBSTANCE which should be handled by trained staff only.
Storage:	4 °C,-20 °C
Storage Comment:	Store as concentrated solution. Centrifuge briefly prior to opening vial. For short-term storage (1-2 weeks), store at 4°C. For long-term storage, aliquot and store at -20°C or below. Avoid multiple freeze-thaw cycles.



Immunofluorescence

Image 1. ICC/IF Image Immunofluorescence analysis of paraformaldehyde-fixed HeLa, using ATF7, antibody at 1:500 dilution.

Western Blotting

Image 2. WB Image Sample(30 µg of whole cell lysate)
A:Hep G2, B:Raji, 12% SDS PAGE antibody diluted at 1:1500