

Datasheet for ABIN2855962
anti-CREB3L1 antibody (C-Term)[Go to Product page](#)

2 Images

Overview

Quantity:	100 µL
Target:	CREB3L1
Binding Specificity:	C-Term
Reactivity:	Human
Host:	Rabbit
Clonality:	Polyclonal
Conjugate:	This CREB3L1 antibody is un-conjugated
Application:	Western Blotting (WB)

Product Details

Immunogen:	Carrier-protein conjugated synthetic peptide encompassing a sequence within the C-terminus region of human CREB3L1. The exact sequence is proprietary.
Isotype:	IgG
Cross-Reactivity:	Human
Characteristics:	Rabbit Polyclonal antibody to CREB3L1 (cAMP responsive element binding protein 3-like 1) CREB3L1 antibody [C3], C-term
Purification:	Purified by antigen-affinity chromatography.

Target Details

Target:	CREB3L1
---------	---------

Target Details

Alternative Name:	cAMP responsive element binding protein 3 like 1 (CREB3L1 Products)
Background:	<p>Transcription factor that acts during endoplasmic reticulum stress by activating unfolded protein response target genes. Specifically involved in ER-stress response in astrocytes in the central nervous system (By similarity). May play a role in gliosis. In vitro, binds to box-B element, cAMP response element (CRE) and CRE-like sequences, and activates transcription through box-B element but not through CRE.</p> <p>Cellular Localization: Endoplasmic reticulum membrane , Processed cyclic AMP-responsive element-binding protein 3-like protein 1: Nucleus</p>
Molecular Weight:	57 kDa
Gene ID:	90993
UniProt:	Q96BA8
Pathways:	Thyroid Hormone Synthesis , Chromatin Binding

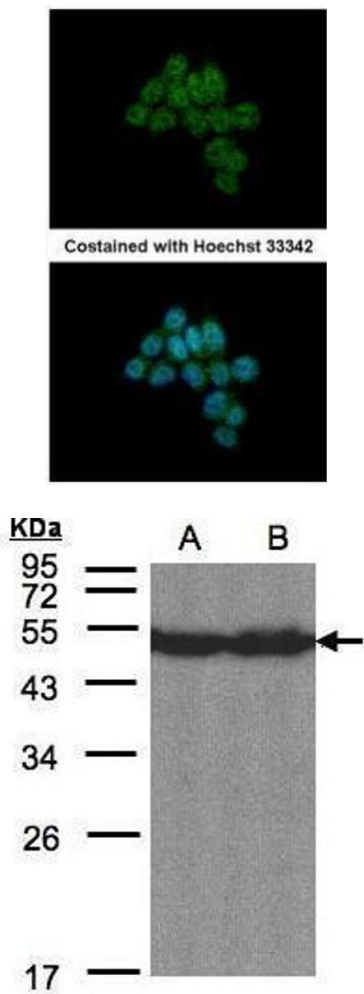
Application Details

Application Notes:	WB: 1:500-1:3000. Optimal dilutions/concentrations should be determined by the researcher. Not tested in other applications.
Comment:	Positive Control: HepG2 , Molt-4 , 293T , A431 , HeLa
Restrictions:	For Research Use only

Handling

Format:	Liquid
Concentration:	1 mg/mL
Buffer:	1XPBS (pH 7), 10 % Glycerol, 0.01 % Thimerosal
Preservative:	Thimerosal (Merthiolate)
Precaution of Use:	This product contains Thimerosal (Merthiolate): a POISONOUS AND HAZARDOUS SUBSTANCE which should be handled by trained staff only.
Storage:	4 °C, -20 °C
Storage Comment:	Store as concentrated solution. Centrifuge briefly prior to opening vial. For short-term storage (1-2 weeks), store at 4°C. For long-term storage, aliquot and store at -20°C or below. Avoid

multiple freeze-thaw cycles.



Immunofluorescence

Image 1. ICC/IF Image Immunofluorescence analysis of paraformaldehyde-fixed HCT116, using CREB3L1, antibody at 1:500 dilution.

Western Blotting

Image 2. WB Image Sample(30 µg of whole cell lysate) A:Hep G2, B:MOLT4 , 12% SDS PAGE antibody diluted at 1:1500