



[Go to Product page](#)

Datasheet for ABIN2855964
anti-TFEC antibody (N-Term)

2 Images

Overview

Quantity:	100 µL
Target:	TFEC
Binding Specificity:	N-Term
Reactivity:	Human
Host:	Rabbit
Clonality:	Polyclonal
Conjugate:	This TFEC antibody is un-conjugated
Application:	Western Blotting (WB), Immunocytochemistry (ICC), Immunofluorescence (IF)

Product Details

Immunogen:	Carrier-protein conjugated synthetic peptide encompassing a sequence within the N-terminus region of human TFEC. The exact sequence is proprietary.
Isotype:	IgG
Cross-Reactivity:	Human
Characteristics:	Rabbit polyclonal antibody to TFEC (transcription factor EC) TFEC antibody [N1], N-term
Purification:	Purified by antigen-affinity chromatography.

Target Details

Target:	TFEC
---------	------

Target Details

Alternative Name:	transcription factor EC (TFEC Products)
Background:	<p>Transcriptional regulator that acts as a repressor or an activator. Acts as a transcriptional repressor on minimal promoter containing element F (that includes an E-box sequence). Binds to element F in an E-box sequence-specific manner. Acts as a transcriptional transactivator on the proximal promoter region of the tartrate-resistant acid phosphatase (TRAP) E-box containing promoter (By similarity). Collaborates with MITF in target gene activation (By similarity). Acts as a transcriptional repressor on minimal promoter containing mu E3 enhancer sequence (By similarity). Binds to mu E3 DNA sequence of the immunoglobulin heavy-chain gene enhancer (By similarity). Binds DNA in a homo- or heterodimeric form.</p> <p>Cellular Localization: Nucleus</p>
Molecular Weight:	39 kDa
Gene ID:	22797
UniProt:	O14948

Application Details

Application Notes:	WB: 1:500-1:3000. ICC/IF: 1:100-1:1000. Optimal dilutions/concentrations should be determined by the researcher. Not tested in other applications.
Comment:	Positive Control: 293T
Restrictions:	For Research Use only

Handling

Format:	Liquid
Concentration:	0.41 mg/mL
Buffer:	0.1M Tris-Glycine (pH 7), 10 % Glycerol, 0.01 % Thimerosal
Preservative:	Thimerosal (Merthiolate)
Precaution of Use:	This product contains Thimerosal (Merthiolate): a POISONOUS AND HAZARDOUS SUBSTANCE which should be handled by trained staff only.
Storage:	4 °C,-20 °C
Storage Comment:	Store as concentrated solution. Centrifuge briefly prior to opening vial. For short-term storage (1-2 weeks), store at 4°C. For long-term storage, aliquot and store at -20°C or below. Avoid

multiple freeze-thaw cycles.

Images

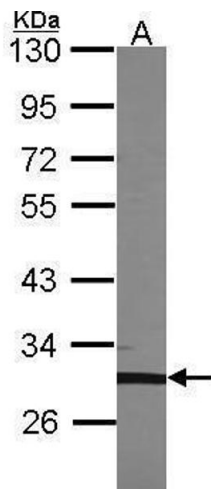
**Western Blotting**

Image 1. WB Image Sample (30 ug of whole cell lysate) A: 293T 10% SDS PAGE TFEC antibody antibody diluted at 1:1000

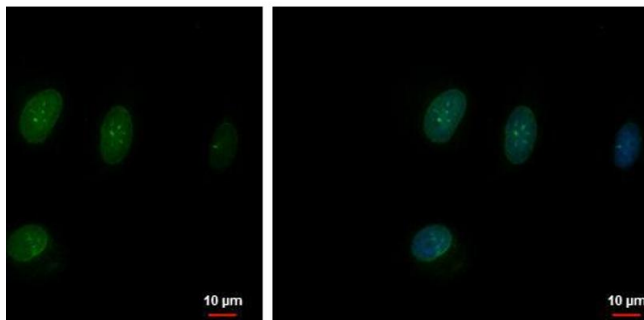
**Immunofluorescence**

Image 2. ICC/IF Image TFEC antibody [N1], N-term detects TFEC protein at nucleus by immunofluorescent analysis. Sample: A549 cells were fixed in 4% paraformaldehyde at RT for 15 min. Green: TFEC protein stained by TFEC antibody [N1], N-term, diluted at 1:500. Blue: Hoechst 33342 staining.