

Datasheet for ABIN2855966
anti-KLF15 antibody (N-Term)[Go to Product page](#)

2 Images

Overview

Quantity:	100 µL
Target:	KLF15
Binding Specificity:	N-Term
Reactivity:	Human
Host:	Rabbit
Clonality:	Polyclonal
Conjugate:	This KLF15 antibody is un-conjugated
Application:	Western Blotting (WB)

Product Details

Immunogen:	Carrier-protein conjugated synthetic peptide encompassing a sequence within the N-terminus region of human KLF15. The exact sequence is proprietary.
Isotype:	IgG
Cross-Reactivity:	Human
Characteristics:	Rabbit polyclonal antibody to KLF15 (Kruppel-like factor 15) KLF15 antibody [N1], N-term
Purification:	Purified by antigen-affinity chromatography.

Target Details

Target:	KLF15
---------	-------

Target Details

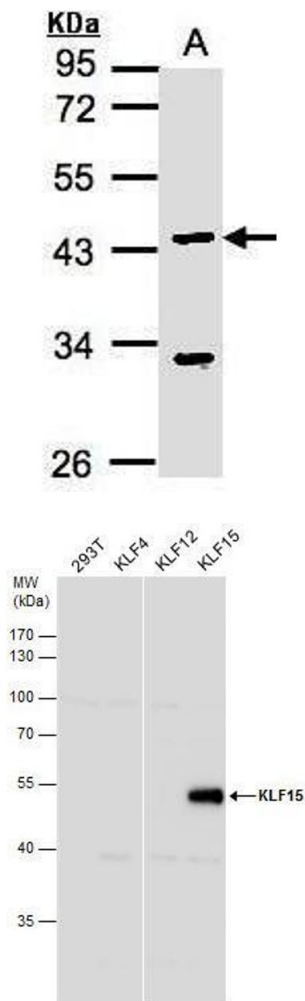
Alternative Name:	Kruppel like factor 15 (KLF15 Products)
Background:	Transcriptional activator. Binds to the GA element of the CLCNKA promoter. Cellular Localization: Nucleus
Molecular Weight:	44 kDa
Gene ID:	28999
UniProt:	Q9UIH9

Application Details

Application Notes:	WB: 1:500-1:3000. Optimal dilutions/concentrations should be determined by the researcher. Not tested in other applications.
Comment:	Positive Control: Molt-4 , human KLF15-transfected 293T Validation: Overexpression
Restrictions:	For Research Use only

Handling

Format:	Liquid
Concentration:	1 mg/mL
Buffer:	0.1M Tris-Glycine (pH 7), 10 % Glycerol, 0.01 % Thimerosal
Preservative:	Thimerosal (Merthiolate)
Precaution of Use:	This product contains Thimerosal (Merthiolate): a POISONOUS AND HAZARDOUS SUBSTANCE which should be handled by trained staff only.
Storage:	4 °C,-20 °C
Storage Comment:	Store as concentrated solution. Centrifuge briefly prior to opening vial. For short-term storage (1-2 weeks), store at 4°C. For long-term storage, aliquot and store at -20°C or below. Avoid multiple freeze-thaw cycles.



Western Blotting

Image 1. WB Image Sample(30 ug whole cell lysate)
A:MOLT4 , 10% SDS PAGE antibody diluted at 1:1000

Western Blotting

Image 2. WB Image KLF15 antibody [N1], N-term detects KLF15 protein by western blot analysis. Non-transfected (-), KLF4-transfected (+), KLF12-transfected (+) and KLF15-transfected (+) 293T whole cell extracts (30 µg) were separated by 10% SDS-PAGE, and the membrane was blotted with KLF15 antibody [N1], N-term , diluted at 1:1000.