



[Go to Product page](#)

Datasheet for ABIN2855968

anti-Forkhead Box K2 antibody (C-Term)

2 Images

Overview

Quantity:	100 µL
Target:	Forkhead Box K2 (FOXK2)
Binding Specificity:	C-Term
Reactivity:	Human
Host:	Rabbit
Clonality:	Polyclonal
Conjugate:	This Forkhead Box K2 antibody is un-conjugated
Application:	Western Blotting (WB), Immunofluorescence (IF), Immunocytochemistry (ICC)

Product Details

Immunogen:	Carrier-protein conjugated synthetic peptide encompassing a sequence within the C-terminus region of human FOXK2. The exact sequence is proprietary.
Isotype:	IgG
Cross-Reactivity:	Human
Characteristics:	Rabbit polyclonal antibody to ILF1 (forkhead box K2) ILF1 antibody [C3], C-term
Purification:	Purified by antigen-affinity chromatography.

Target Details

Target:	Forkhead Box K2 (FOXK2)
---------	-------------------------

Target Details

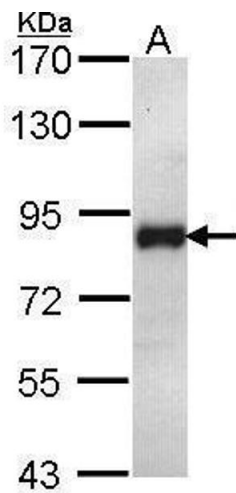
Alternative Name:	forkhead box K2 (FOXK2 Products)
Background:	The protein encoded by this gene contains a fork head DNA binding domain. This protein can bind to the purine-rich motifs of the HIV long terminal repeat (LTR), and to the similar purine-rich motif in the interleukin 2 (IL2) promoter. It may be involved in the regulation of viral and cellular promoter elements. Cellular Localization: Nucleus
Molecular Weight:	69 kDa
Gene ID:	3607
UniProt:	Q01167

Application Details

Application Notes:	WB: 1:500-1:3000. ICC/IF: 1:100-1:1000. Optimal dilutions/concentrations should be determined by the researcher. Not tested in other applications.
Comment:	Positive Control: H1299
Restrictions:	For Research Use only

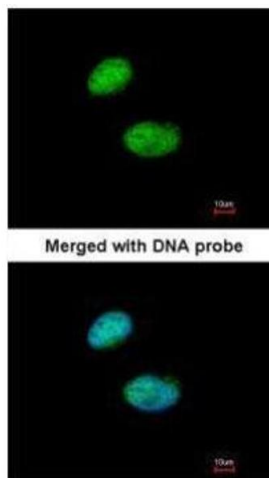
Handling

Format:	Liquid
Concentration:	0.8 mg/mL
Buffer:	1XPBS (pH 7), 10 % Glycerol, 0.01 % Thimerosal
Preservative:	Thimerosal (Merthiolate)
Precaution of Use:	This product contains Thimerosal (Merthiolate): a POISONOUS AND HAZARDOUS SUBSTANCE which should be handled by trained staff only.
Storage:	4 °C, -20 °C
Storage Comment:	Store as concentrated solution. Centrifuge briefly prior to opening vial. For short-term storage (1-2 weeks), store at 4°C. For long-term storage, aliquot and store at -20°C or below. Avoid multiple freeze-thaw cycles.



Western Blotting

Image 1. WB Image Sample (30 ug of whole cell lysate) A:
H1299 7.5% SDS PAGE antibody diluted at 1:1000



Immunofluorescence

Image 2. ICC/IF Image Immunofluorescence analysis of paraformaldehyde-fixed HeLa, using ILF1 , antibody at 1:200 dilution.