



[Go to Product page](#)

Datasheet for ABIN2855970
anti-IRF5 antibody (C-Term)

2 Images

Overview

Quantity:	100 µL
Target:	IRF5
Binding Specificity:	C-Term
Reactivity:	Human
Host:	Rabbit
Clonality:	Polyclonal
Conjugate:	This IRF5 antibody is un-conjugated
Application:	Western Blotting (WB), Immunofluorescence (IF), Immunocytochemistry (ICC)

Product Details

Immunogen:	Carrier-protein conjugated synthetic peptide encompassing a sequence within the C-terminus region of human IRF5. The exact sequence is proprietary.
Isotype:	IgG
Cross-Reactivity:	Human
Characteristics:	Rabbit Polyclonal antibody to IRF5 (interferon regulatory factor 5) IRF5 antibody [C3], C-term
Purification:	Purified by antigen-affinity chromatography.

Target Details

Target:	IRF5
---------	------

Target Details

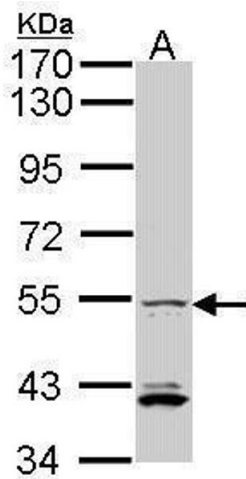
Alternative Name:	interferon regulatory factor 5 (IRF5 Products)
Background:	<p>This gene encodes a member of the interferon regulatory factor (IRF) family, a group of transcription factors with diverse roles, including virus-mediated activation of interferon, and modulation of cell growth, differentiation, apoptosis, and immune system activity. Members of the IRF family are characterized by a conserved N-terminal DNA-binding domain containing tryptophan (W) repeats. Alternative splice variants encoding different isoforms exist.</p> <p>Cellular Localization: Nucleus</p>
Molecular Weight:	56 kDa
Gene ID:	3663
UniProt:	Q13568
Pathways:	TLR Signaling, Autophagy

Application Details

Application Notes:	WB: 1:500-1:3000. ICC/IF: 1:100-1:1000. Optimal dilutions/concentrations should be determined by the researcher. Not tested in other applications.
Comment:	Positive Control: HepG2
Restrictions:	For Research Use only

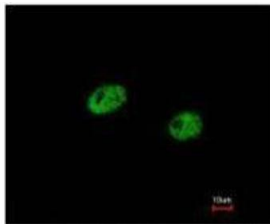
Handling

Format:	Liquid
Concentration:	0.55 mg/mL
Buffer:	1XPBS (pH 7), 10 % Glycerol, 0.01 % Thimerosal
Preservative:	Thimerosal (Merthiolate)
Precaution of Use:	This product contains Thimerosal (Merthiolate): a POISONOUS AND HAZARDOUS SUBSTANCE which should be handled by trained staff only.
Storage:	4 °C, -20 °C
Storage Comment:	Store as concentrated solution. Centrifuge briefly prior to opening vial. For short-term storage (1-2 weeks), store at 4°C. For long-term storage, aliquot and store at -20°C or below. Avoid multiple freeze-thaw cycles.



Western Blotting

Image 1. WB Image Sample (30 ug of whole cell lysate) A:
Hep G2 , 7.5% SDS PAGE antibody diluted at 1:1000



Costained with Hoechst 33342



Immunofluorescence

Image 2. ICC/IF Image Immunofluorescence analysis of
paraformaldehyde-fixed HeLa, using IRF5, antibody at 1:500
dilution.