



[Go to Product page](#)

Datasheet for ABIN2855973
anti-IRF6 antibody (C-Term)

2 Images

Overview

Quantity:	100 µL
Target:	IRF6
Binding Specificity:	C-Term
Reactivity:	Human
Host:	Rabbit
Clonality:	Polyclonal
Conjugate:	This IRF6 antibody is un-conjugated
Application:	Western Blotting (WB), Immunofluorescence (IF), Immunohistochemistry (Paraffin-embedded Sections) (IHC (p)), Immunocytochemistry (ICC)

Product Details

Immunogen:	Carrier-protein conjugated synthetic peptide encompassing a sequence within the C-terminus region of human IRF6. The exact sequence is proprietary.
Isotype:	IgG
Cross-Reactivity:	Human, Mouse, Rat
Characteristics:	Rabbit Polyclonal antibody to IRF6 (interferon regulatory factor 6) IRF6 antibody [C3], C-term
Purification:	Purified by antigen-affinity chromatography.

Target Details

Target:	IRF6
---------	------

Target Details

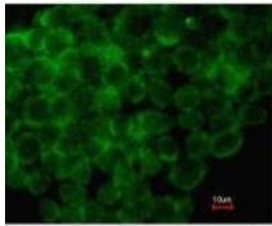
Alternative Name:	interferon regulatory factor 6 (IRF6 Products)
Background:	This gene encodes a member of the interferon regulatory transcription factor (IRF) family. Family members share a highly-conserved N-terminal helix-turn-helix DNA-binding domain and a less conserved C-terminal protein-binding domain. Mutations in this gene can cause van der Woude syndrome and popliteal pterygium syndrome. This protein is involved in palate formation.
Molecular Weight:	53 kDa
Gene ID:	3664
UniProt:	014896

Application Details

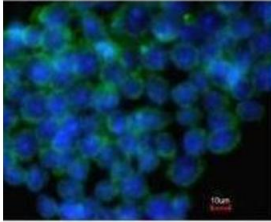
Application Notes:	WB: 1:500-1:3000. ICC/IF: 1:50-1:500. IHC-P: 1:100-1:1000. Optimal dilutions/concentrations should be determined by the researcher. Not tested in other applications.
Comment:	Positive Control: IRF6 transfected 293T
Restrictions:	For Research Use only

Handling

Format:	Liquid
Concentration:	1 mg/mL
Buffer:	1XPBS (pH 7), 10 % Glycerol, 0.01 % Thimerosal
Preservative:	Thimerosal (Merthiolate)
Precaution of Use:	This product contains Thimerosal (Merthiolate): a POISONOUS AND HAZARDOUS SUBSTANCE which should be handled by trained staff only.
Storage:	4 °C, -20 °C
Storage Comment:	Store as concentrated solution. Centrifuge briefly prior to opening vial. For short-term storage (1-2 weeks), store at 4°C. For long-term storage, aliquot and store at -20°C or below. Avoid multiple freeze-thaw cycles.

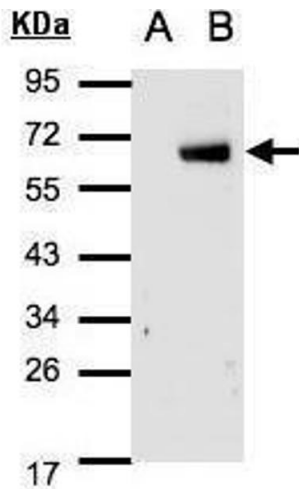


Costained with Hoechst 33342



Immunofluorescence

Image 1. ICC/IF Image Immunofluorescence analysis of methanol-fixed mouse ESC, using IRF6, antibody at 1:100 dilution.



Western Blotting

Image 2. WB Image Western Blot analysis of IRF6 expression in transfected 293T cell line by IRF6 polyclonal antibody. A: Non-transfected lysate. B: IRF6 transfected lysate. 12% SDS PAGE antibody diluted at 1:500