

Datasheet for ABIN2855979  
**anti-KIF4A antibody (C-Term)**[Go to Product page](#)

## 1 Image

## Overview

Quantity:	100 µL
Target:	KIF4A
Binding Specificity:	C-Term
Reactivity:	Human
Host:	Rabbit
Clonality:	Polyclonal
Conjugate:	This KIF4A antibody is un-conjugated
Application:	Western Blotting (WB)

## Product Details

Immunogen:	Carrier-protein conjugated synthetic peptide encompassing a sequence within the C-terminus region of human KIF4A. The exact sequence is proprietary.
Isotype:	IgG
Cross-Reactivity:	Human
Characteristics:	Rabbit polyclonal antibody to KIF4A (kinesin family member 4A) KIF4A antibody [C3], C-term
Purification:	Purified by antigen-affinity chromatography.

## Target Details

Target:	KIF4A
---------	-------

## Target Details

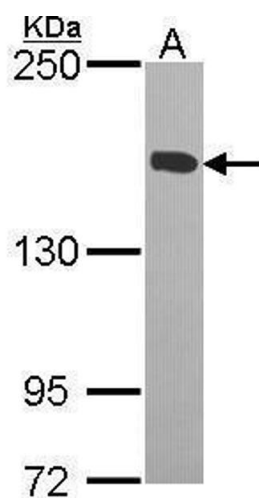
Alternative Name:	kinesin family member 4A ( <a href="#">KIF4A Products</a> )
Background:	Kinesins, such as KIF4A, are microtubule-based motor proteins that generate directional movement along microtubules. They are involved in many crucial cellular processes, including cell division (Zhu and Jiang, 2005 [PubMed 15625105]).[supplied by OMIM]  Cellular Localization: Nucleus matrix
Molecular Weight:	140 kDa
Gene ID:	24137
UniProt:	<a href="#">O95239</a>

## Application Details

Application Notes:	WB: 1:500-1:3000. Optimal dilutions/concentrations should be determined by the researcher. Not tested in other applications.
Comment:	Positive Control: H1299
Restrictions:	For Research Use only

## Handling

Format:	Liquid
Concentration:	1 mg/mL
Buffer:	1XPBS ( pH 7), 10 % Glycerol, 0.01 % Thimerosal
Preservative:	Thimerosal (Merthiolate)
Precaution of Use:	This product contains Thimerosal (Merthiolate): a POISONOUS AND HAZARDOUS SUBSTANCE which should be handled by trained staff only.
Storage:	4 °C,-20 °C
Storage Comment:	Store as concentrated solution. Centrifuge briefly prior to opening vial. For short-term storage (1-2 weeks), store at 4°C. For long-term storage, aliquot and store at -20°C or below. Avoid multiple freeze-thaw cycles.



Western Blotting

**Image 1.** WB Image Sample (30 ug of whole cell lysate) A:  
H1299 5% SDS PAGE antibody diluted at 1:1000