

Datasheet for ABIN2855980
anti-KIF5B antibody (C-Term)

2 Images

[Go to Product page](#)

Overview

Quantity:	100 µL
Target:	KIF5B
Binding Specificity:	C-Term
Reactivity:	Human
Host:	Rabbit
Clonality:	Polyclonal
Conjugate:	This KIF5B antibody is un-conjugated
Application:	Western Blotting (WB), Immunohistochemistry (Paraffin-embedded Sections) (IHC (p))

Product Details

Immunogen:	Carrier-protein conjugated synthetic peptide encompassing a sequence within the C-terminus region of human KIF5B. The exact sequence is proprietary.
Isotype:	IgG
Cross-Reactivity:	Human
Characteristics:	Rabbit Polyclonal antibody to UKHC (kinesin family member 5B) UKHC antibody [C3], C-term
Purification:	Purified by antigen-affinity chromatography.

Target Details

Target:	KIF5B
---------	-------

Target Details

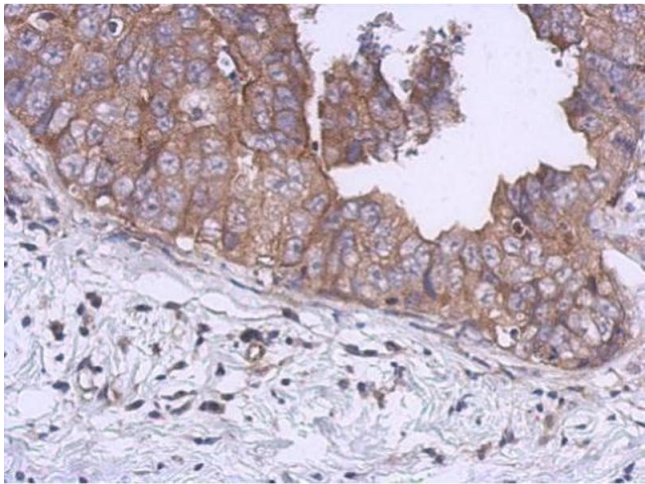
Alternative Name:	kinesin family member 5B (KIF5B Products)
Background:	Cellular Localization: Cytoplasm , cytoskeleton (By similarity)
Molecular Weight:	110 kDa
Gene ID:	3799
UniProt:	P33176
Pathways:	Peptide Hormone Metabolism , Ribonucleoprotein Complex Subunit Organization

Application Details

Application Notes:	WB: 1:500-1:3000. IHC-P: 1:100-1:1000. Optimal dilutions/concentrations should be determined by the researcher. Not tested in other applications.
Comment:	Positive Control: 293T , A431 , H1299
Restrictions:	For Research Use only

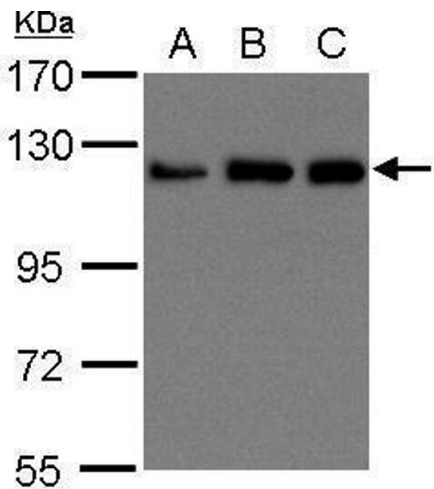
Handling

Format:	Liquid
Concentration:	0.4 mg/mL
Buffer:	1XPBS (pH 7), 10 % Glycerol, 0.01 % Thimerosal
Preservative:	Thimerosal (Merthiolate)
Precaution of Use:	This product contains Thimerosal (Merthiolate): a POISONOUS AND HAZARDOUS SUBSTANCE which should be handled by trained staff only.
Storage:	4 °C, -20 °C
Storage Comment:	Store as concentrated solution. Centrifuge briefly prior to opening vial. For short-term storage (1-2 weeks), store at 4°C. For long-term storage, aliquot and store at -20°C or below. Avoid multiple freeze-thaw cycles.



Immunohistochemistry

Image 1. IHC-P Image Immunohistochemical analysis of paraffin-embedded human breast cancer, using UKHC, antibody at 1:500 dilution.



Western Blotting

Image 2. WB Image Sample (30 ug of whole cell lysate) A: 293T B: A431 , C: H1299 15% SDS PAGE antibody diluted at 1:1500