

Datasheet for ABIN2855982  
**anti-ZBTB7A antibody (C-Term)**[Go to Product page](#)

## 2 Images

## Overview

Quantity:	100 µL
Target:	ZBTB7A
Binding Specificity:	C-Term
Reactivity:	Human
Host:	Rabbit
Clonality:	Polyclonal
Conjugate:	This ZBTB7A antibody is un-conjugated
Application:	Western Blotting (WB), Immunohistochemistry (Paraffin-embedded Sections) (IHC (p))

## Product Details

Immunogen:	Carrier-protein conjugated synthetic peptide encompassing a sequence within the C-terminus region of human Pokemon. The exact sequence is proprietary.
Isotype:	IgG
Cross-Reactivity:	Human
Characteristics:	Rabbit Polyclonal antibody to Pokemon (zinc finger and BTB domain containing 7A) Pokemon antibody [C3], C-term
Purification:	Purified by antigen-affinity chromatography.

## Target Details

Target:	ZBTB7A
---------	--------

## Target Details

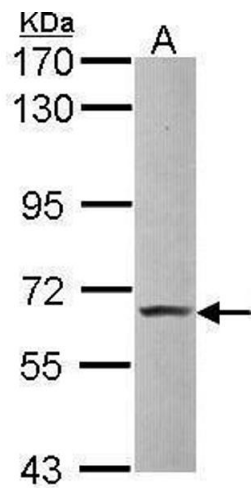
Alternative Name:	zinc finger and BTB domain containing 7A ( <a href="#">ZBTB7A Products</a> )
Background:	Plays a key role in the instruction of early lymphoid progenitors to develop into B lineage by repressing T-cell instructive Notch signals (By similarity). Specifically represses the transcription of the CDKN2A gene. Efficiently abrogates E2F1-dependent CDKN2A transactivation/de-repression. Binds to the consensus sequence 5'-[GA][CA]GACCCCCCCCC-3'.  Cellular Localization: Nucleus
Molecular Weight:	61 kDa
Gene ID:	51341
UniProt:	<a href="#">O95365</a>

## Application Details

Application Notes:	WB: 1:500-1:3000. IHC-P: 1:100-1:1000. Optimal dilutions/concentrations should be determined by the researcher. Not tested in other applications.
Comment:	Positive Control: HepG2
Restrictions:	For Research Use only

## Handling

Format:	Liquid
Concentration:	1 mg/mL
Buffer:	1XPBS ( pH 7), 10 % Glycerol, 0.01 % Thimerosal
Preservative:	Thimerosal (Merthiolate)
Precaution of Use:	This product contains Thimerosal (Merthiolate): a POISONOUS AND HAZARDOUS SUBSTANCE which should be handled by trained staff only.
Storage:	4 °C,-20 °C
Storage Comment:	Store as concentrated solution. Centrifuge briefly prior to opening vial. For short-term storage (1-2 weeks), store at 4°C. For long-term storage, aliquot and store at -20°C or below. Avoid multiple freeze-thaw cycles.



#### Western Blotting

**Image 1.** WB Image Sample (30 ug of whole cell lysate) A: Hep G2 , 7.5% SDS PAGE antibody diluted at 1:1000



#### Immunohistochemistry

**Image 2.** IHC-P Image Immunohistochemical analysis of paraffin-embedded human lung, using Pokemon, antibody at 1:100 dilution.