

Datasheet for ABIN2855985

anti-CLIC4 antibody**2** Images[Go to Product page](#)

Overview

Quantity:	100 µL
Target:	CLIC4
Reactivity:	Human
Host:	Rabbit
Clonality:	Polyclonal
Conjugate:	This CLIC4 antibody is un-conjugated
Application:	Western Blotting (WB), Immunofluorescence (IF), Immunohistochemistry (Paraffin-embedded Sections) (IHC (p)), Immunocytochemistry (ICC)

Product Details

Immunogen:	Recombinant protein encompassing a sequence within the center region of human CLIC4. The exact sequence is proprietary.
Isotype:	IgG
Cross-Reactivity:	Human, Zebrafish (Danio rerio)
Characteristics:	Rabbit Polyclonal antibody to CLIC4 (chloride intracellular channel 4) CLIC4 antibody
Purification:	Purified by antigen-affinity chromatography.

Target Details

Target:	CLIC4
Alternative Name:	chloride intracellular channel 4 (CLIC4 Products)

Target Details

Background: Chloride channels are a diverse group of proteins that regulate fundamental cellular processes including stabilization of cell membrane potential, transepithelial transport, maintenance of intracellular pH, and regulation of cell volume. Chloride intracellular channel 4 (CLIC4) protein, encoded by the CLIC4 gene, is a member of the p64 family, the gene is expressed in many tissues and exhibits a intracellular vesicular pattern in Panc-1 cells (pancreatic cancer cells).

Cellular Localization: Cytoplasm, Cytoplasmic vesicle membrane, Single-pass membrane protein, Nucleus, Cell membrane, Single-pass membrane protein, Cytoplasm, Cytoplasmic vesicle membrane, Nucleus, Cell membrane

Molecular Weight: 29 kDa

Gene ID: 25932

UniProt: [Q9Y696](#)

Application Details

Application Notes: WB: 1:500-1:3000. ICC/IF: 1:100-1:1000. Optimal dilutions/concentrations should be determined by the researcher. Not tested in other applications.

Restrictions: For Research Use only

Handling

Format: Liquid

Concentration: 0.83 mg/mL

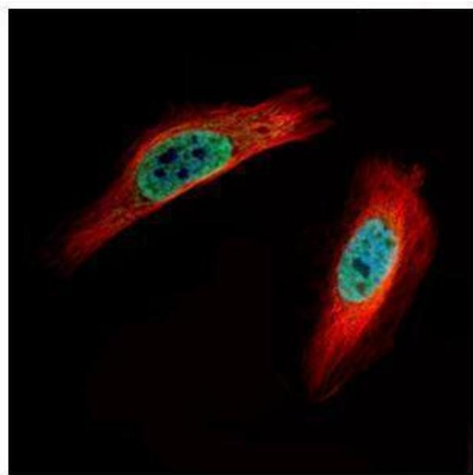
Buffer: 1XPBS (pH 7), 1 % BSA, 20 % Glycerol, 0.01 % Thimerosal

Preservative: Thimerosal (Merthiolate)

Precaution of Use: This product contains Thimerosal (Merthiolate): a POISONOUS AND HAZARDOUS SUBSTANCE which should be handled by trained staff only.

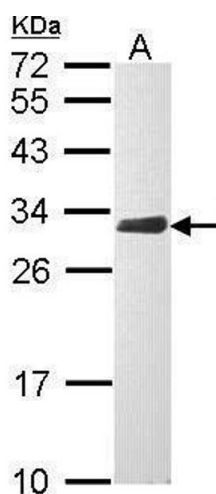
Storage: 4 °C, -20 °C

Storage Comment: Store as concentrated solution. Centrifuge briefly prior to opening vial. For short-term storage (1-2 weeks), store at 4°C. For long-term storage, aliquot and store at -20°C or below. Avoid multiple freeze-thaw cycles.



Immunofluorescence

Image 1. ICC/IF Image Confocal immunofluorescence analysis (Olympus FV10i) of paraformaldehyde-fixed HeLa, using CLIC4, antibody (Green) at 1:500 dilution. Alpha-tubulin filaments were labeled with (Red) at 1:2500.



Western Blotting

Image 2. WB Image Sample (30 ug of whole cell lysate) A: Raji 12% SDS PAGE antibody diluted at 1:1000