

Datasheet for ABIN2855986
anti-CTDSP2 antibody (Center)

3 Images

[Go to Product page](#)

Overview

Quantity:	100 µL
Target:	CTDSP2
Binding Specificity:	Center
Reactivity:	Human, Rat, Mouse
Host:	Rabbit
Clonality:	Polyclonal
Conjugate:	This CTDSP2 antibody is un-conjugated
Application:	Western Blotting (WB)

Product Details

Immunogen:	Recombinant protein encompassing a sequence within the center region of human CTDSP2. The exact sequence is proprietary.
Isotype:	IgG
Cross-Reactivity:	Rhesus Monkey
Cross-Reactivity (Details):	Rhesus Monkey (100 %)
Characteristics:	Rabbit Polyclonal antibody to CTDSP2 (CTD (carboxy-terminal domain, RNA polymerase II, polypeptide A) small phosphatase 2) CTDSP2 antibody
Purification:	Purified by antigen-affinity chromatography.

Target Details

Target:	CTDSP2
Alternative Name:	CTDSP2 (CTDSP2 Products)
Background:	<p>Preferentially catalyzes the dephosphorylation of 'Ser-5' within the tandem 7 residues repeats in the C-terminal domain (CTD) of the largest RNA polymerase II subunit POLR2A. Negatively regulates RNA polymerase II transcription, possibly by controlling the transition from initiation/capping to processive transcript elongation. Recruited by REST to neuronal genes that contain RE-1 elements, leading to neuronal gene silencing in non-neuronal cells. May contribute to the development of sarcomas.</p> <p>Cellular Localization: Nucleus</p>
Molecular Weight:	31 kDa
Gene ID:	10106
Pathways:	ER-Nucleus Signaling

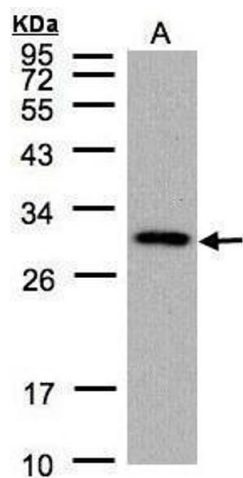
Application Details

Application Notes:	<p>Suggested dilution Reference Western blot 1:500-1:3000* Not tested in other applications.</p> <p>*Optimal dilutions/concentrations should be determined by the researcher.Suggested dilutionReferenceWestern blot1:500-1:3000*</p>
Comment:	Positive Control: 293T , mouse brain , PC-12
Restrictions:	For Research Use only

Handling

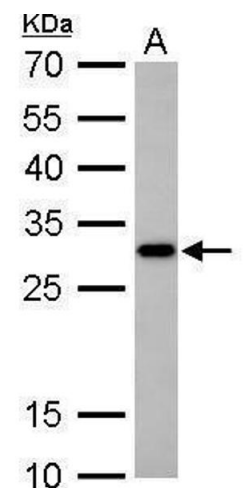
Format:	Liquid
Concentration:	0.96 mg/mL
Buffer:	0.1M Tris, 0.1M Glycine, 10 % Glycerol (pH 7). 0.01 % Thimerosal was added as a preservative.
Preservative:	Thimerosal (Merthiolate)
Precaution of Use:	This product contains Thimerosal (Merthiolate): a POISONOUS AND HAZARDOUS SUBSTANCE which should be handled by trained staff only.
Storage:	-20 °C
Storage Comment:	Keep as concentrated solution. Aliquot and store at -20°C or below. Avoid multiple freeze-thaw

cycles.



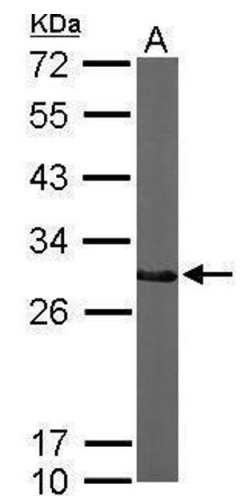
Western Blotting

Image 1. WB Image Sample (30 ug of whole cell lysate) A: 293T 12% SDS PAGE CTDSP2 antibody antibody diluted at 1:1000



Western Blotting

Image 2. WB Image CTDSP2 antibody detects CTDSP2 protein by Western blot analysis. A. 30 µg PC-12 whole cell lysate/extract 12 % SDS-PAGE CTDSP2 antibody , dilution: 1:1000



Western Blotting

Image 3. WB Image Sample (50 ug of whole cell lysate) A: Mouse brain 12% SDS PAGE antibody diluted at 1:1000