

Datasheet for ABIN2855991

anti-PDSS2 antibody**2** Images[Go to Product page](#)

Overview

Quantity:	100 µL
Target:	PDSS2
Reactivity:	Human
Host:	Rabbit
Clonality:	Polyclonal
Conjugate:	This PDSS2 antibody is un-conjugated
Application:	Western Blotting (WB)

Product Details

Immunogen:	Recombinant protein encompassing a sequence within the center region of human PDSS2. The exact sequence is proprietary.
Isotype:	IgG
Cross-Reactivity:	Human, Mouse
Characteristics:	Rabbit Polyclonal antibody to PDSS2 (prenyl (decaprenyl) diphosphate synthase, subunit 2) PDSS2 antibody [N2C3]
Purification:	Purified by antigen-affinity chromatography.

Target Details

Target:	PDSS2
Alternative Name:	decaprenyl diphosphate synthase subunit 2 (PDSS2 Products)

Target Details

Background: The isoprenoid chain of ubiquinone (coenzyme Q) varies in length between species and is determined by trans-polyprenyl diphosphate synthase. Humans possess a heterotetrameric decaprenyl diphosphate synthase composed of DPS1 (PDSS1, MIM 607429) and DLP1 (PDSS2) that produces Q10 ubiquinone (Saiki et al., 2005 [PubMed 16262699]).[supplied by OMIM]

Molecular Weight: 44 kDa

Gene ID: 57107

UniProt: [Q86YH6](#)

Application Details

Application Notes: WB: 1:500-1:3000. Optimal dilutions/concentrations should be determined by the researcher.
Not tested in other applications.

Comment: Positive Control: Mouse brain , A431

Restrictions: For Research Use only

Handling

Format: Liquid

Concentration: 0.54 mg/mL

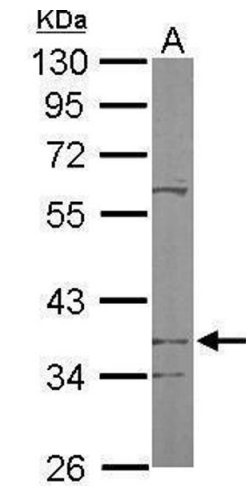
Buffer: 0.1M Tris-Glycine (pH 7), 10 % Glycerol, 0.01 % Thimerosal

Preservative: Thimerosal (Merthiolate)

Precaution of Use: This product contains Thimerosal (Merthiolate): a POISONOUS AND HAZARDOUS SUBSTANCE which should be handled by trained staff only.

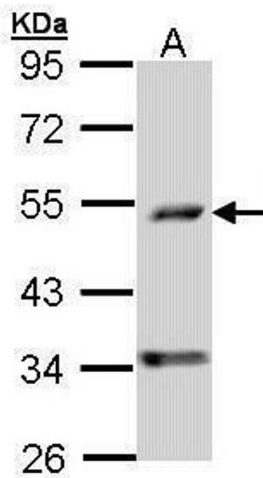
Storage: 4 °C,-20 °C

Storage Comment: Store as concentrated solution. Centrifuge briefly prior to opening vial. For short-term storage (1-2 weeks), store at 4°C. For long-term storage, aliquot and store at -20°C or below. Avoid multiple freeze-thaw cycles.



Western Blotting

Image 1. WB Image Sample (50 ug of whole cell lysate) A:
Mouse brain 10% SDS PAGE antibody diluted at 1:1000



Western Blotting

Image 2. WB Image Sample (30 ug of whole cell lysate) A:
A431 , 10% SDS PAGE antibody diluted at 1:1000