



Datasheet for ABIN2855993
anti-Elastase 3A antibody



[Go to Product page](#)

3 Images

Overview

Quantity:	100 µL
Target:	Elastase 3A (ELA3A)
Reactivity:	Human
Host:	Rabbit
Clonality:	Polyclonal
Conjugate:	This Elastase 3A antibody is un-conjugated
Application:	Western Blotting (WB), Immunohistochemistry (Paraffin-embedded Sections) (IHC (p))

Product Details

Immunogen:	Recombinant protein encompassing a sequence within the center region of human Elastase 3A. The exact sequence is proprietary.
Isotype:	IgG
Cross-Reactivity:	Human
Characteristics:	Rabbit Polyclonal antibody to ELA3A (chymotrypsin-like elastase family, member 3A) ELA3A antibody
Purification:	Purified by antigen-affinity chromatography.

Target Details

Target:	Elastase 3A (ELA3A)
Alternative Name:	chymotrypsin like elastase family member 3A (ELA3A Products)

Target Details

Background: Elastases form a subfamily of serine proteases that hydrolyze many proteins in addition to elastin. Humans have six elastase genes which encode the structurally similar proteins elastase 1, 2, 2A, 2B, 3A, and 3B. Unlike other elastases, elastase 3A has little elastolytic activity. Like most of the human elastases, elastase 3A is secreted from the pancreas as a zymogen and, like other serine proteases such as trypsin, chymotrypsin and kallikrein, it has a digestive function in the intestine. Elastase 3A preferentially cleaves proteins after alanine residues. Elastase 3A may also function in the intestinal transport and metabolism of cholesterol. Both elastase 3A and elastase 3B have been referred to as protease E and as elastase 1.

Molecular Weight: 29 kDa

Gene ID: 10136

UniProt: [P09093](#)

Application Details

Application Notes: WB: 1:500-1:3000. IHC-P: 1:100-1:1000. Optimal dilutions/concentrations should be determined by the researcher. Not tested in other applications.

Comment: Positive Control: PC-3

Restrictions: For Research Use only

Handling

Format: Liquid

Concentration: 1 mg/mL

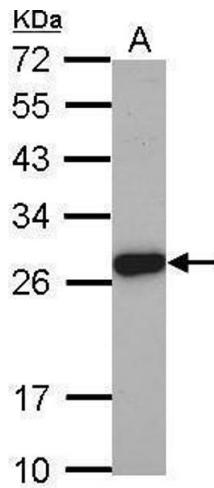
Buffer: 1XPBS (pH 7), 1 % BSA, 20 % Glycerol, 0.01 % Thimerosal

Preservative: Thimerosal (Merthiolate)

Precaution of Use: This product contains Thimerosal (Merthiolate): a POISONOUS AND HAZARDOUS SUBSTANCE which should be handled by trained staff only.

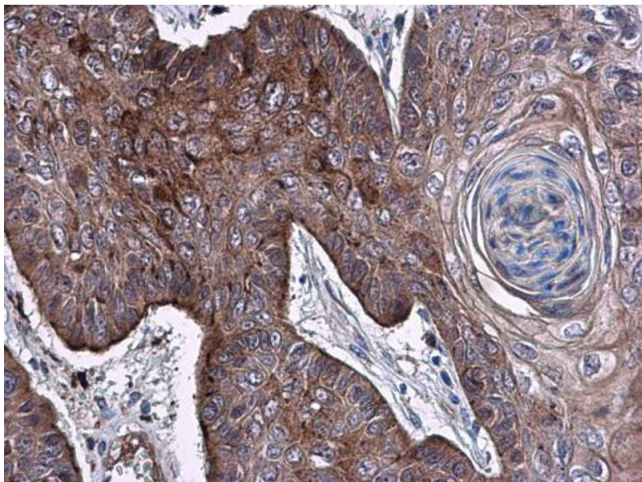
Storage: 4 °C,-20 °C

Storage Comment: Store as concentrated solution. Centrifuge briefly prior to opening vial. For short-term storage (1-2 weeks), store at 4°C. For long-term storage, aliquot and store at -20°C or below. Avoid multiple freeze-thaw cycles.



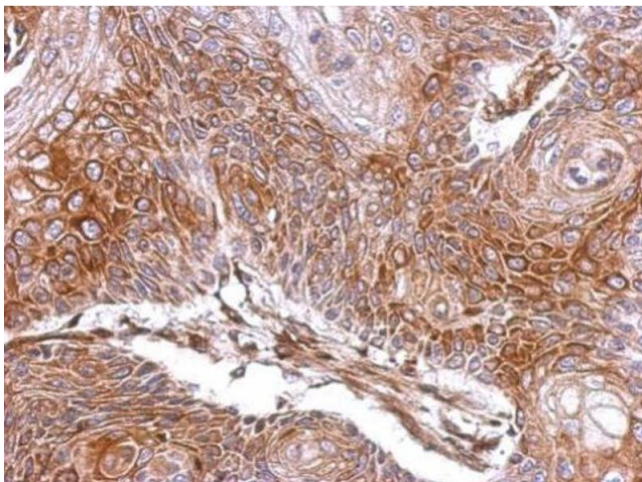
Western Blotting

Image 1. WB Image Sample (30 ug of whole cell lysate) A: PC-3 12% SDS PAGE antibody diluted at 1:2000



Immunohistochemistry

Image 2. IHC-P Image ELA3A antibody detects ELA3A protein at cytoplasm in human esophagus carcinoma by immunohistochemical analysis. Sample: Paraffin-embedded human esophagus carcinoma. ELA3A antibody , diluted at 1:500.



Immunohistochemistry

Image 3. IHC-P Image Immunohistochemical analysis of paraffin-embedded Cal27 xenograft, using ELA3A, antibody at 1:500 dilution.