

Datasheet for ABIN2855996

**anti-INPP5A antibody**[Go to Product page](#)**1** Image

## Overview

|              |                                       |
|--------------|---------------------------------------|
| Quantity:    | 100 µL                                |
| Target:      | INPP5A                                |
| Reactivity:  | Human                                 |
| Host:        | Rabbit                                |
| Clonality:   | Polyclonal                            |
| Conjugate:   | This INPP5A antibody is un-conjugated |
| Application: | Western Blotting (WB)                 |

## Product Details

|                   |   |
|-------------------|---|
| Immunogen:        | Recombinant protein encompassing a sequence within the center region of human INPP5A.<br>The exact sequence is proprietary. |
| Isotype:          | IgG   |
| Cross-Reactivity: | Human   |
| Characteristics:  | Rabbit Polyclonal antibody to INPP5A (inositol polyphosphate-5-phosphatase, 40 kDa)<br>INPP5A antibody [N2C3]               |
| Purification:     | Purified by antigen-affinity chromatography.  |

## Target Details

|                   |  |
|-------------------|--|
| Target:           | INPP5A   |
| Alternative Name: | inositol polyphosphate-5-phosphatase A ( <a href="#">INPP5A Products</a> ) |

## Target Details

**Background:** The protein encoded by this gene is a membrane-associated type I inositol 1,4,5-trisphosphate (InsP3) 5-phosphatase. InsP3 5-phosphatases hydrolyze Ins(1,4,5)P3, which mobilizes intracellular calcium and acts as a second messenger mediating cell responses to various stimulation.

**Molecular Weight:** 48 kDa

**Gene ID:** 3632

**UniProt:** [Q14642](#)

## Application Details

**Application Notes:** WB: 1:500-1:3000. Optimal dilutions/concentrations should be determined by the researcher.  
Not tested in other applications.

**Restrictions:** For Research Use only

## Handling

**Format:** Liquid

**Concentration:** 0.74 mg/mL

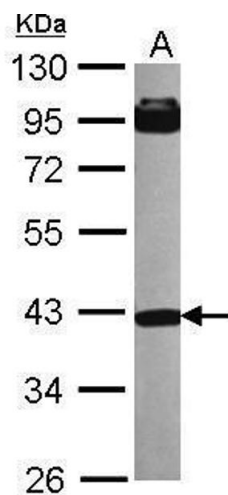
**Buffer:** 0.1M Tris-Glycine ( pH 7), 10 % Glycerol, 0.01 % Thimerosal

**Preservative:** Thimerosal (Merthiolate)

**Precaution of Use:** This product contains Thimerosal (Merthiolate): a POISONOUS AND HAZARDOUS SUBSTANCE which should be handled by trained staff only.

**Storage:** 4 °C, -20 °C

**Storage Comment:** Store as concentrated solution. Centrifuge briefly prior to opening vial. For short-term storage (1-2 weeks), store at 4°C. For long-term storage, aliquot and store at -20°C or below. Avoid multiple freeze-thaw cycles.



Western Blotting

**Image 1.** WB Image Sample (30 ug of whole cell lysate) A:  
NT2D1 10% SDS PAGE antibody diluted at 1:1000