

Datasheet for ABIN2855998

anti-ADAM10 antibody**2** Images[Go to Product page](#)

Overview

Quantity:	100 µL
Target:	ADAM10
Reactivity:	Human
Host:	Rabbit
Clonality:	Polyclonal
Conjugate:	This ADAM10 antibody is un-conjugated
Application:	Western Blotting (WB), Immunofluorescence (IF), Immunocytochemistry (ICC), Immunohistochemistry (Paraffin-embedded Sections) (IHC (p))

Product Details

Immunogen:	Recombinant protein encompassing a sequence within the center region of human ADAM10. The exact sequence is proprietary.
Isotype:	IgG
Cross-Reactivity:	Drosophila melanogaster, Human, Mouse
Characteristics:	Rabbit Polyclonal antibody to ADAM10 (disintegrin and metalloproteinase domain-containing protein 10) ADAM10 antibody [N2C1], Internal
Purification:	Purified by antigen-affinity chromatography.

Target Details

Target:	ADAM10
---------	--------

Target Details

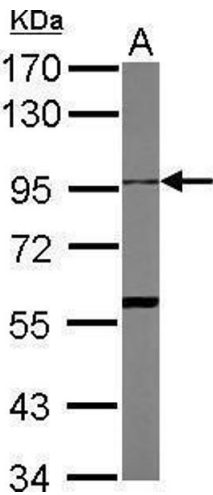
Alternative Name:	ADAM metallopeptidase domain 10 (ADAM10 Products)
Background:	Members of the ADAM family are cell surface proteins with a unique structure possessing both potential adhesion and protease domains. This gene encodes an ADAM family member that cleaves many proteins including TNF-alpha and E-cadherin. Cellular Localization: Cell membrane , Endomembrane system
Molecular Weight:	84 kDa
Gene ID:	102
UniProt:	O14672
Pathways:	Notch Signaling , EGFR Signaling Pathway

Application Details

Application Notes:	WB: 1:500-1:3000. IHC-P: 1:100-1:1000. Optimal dilutions/concentrations should be determined by the researcher. Not tested in other applications.
Comment:	Positive Control: THP-1 Validation: Orthogonal
Restrictions:	For Research Use only

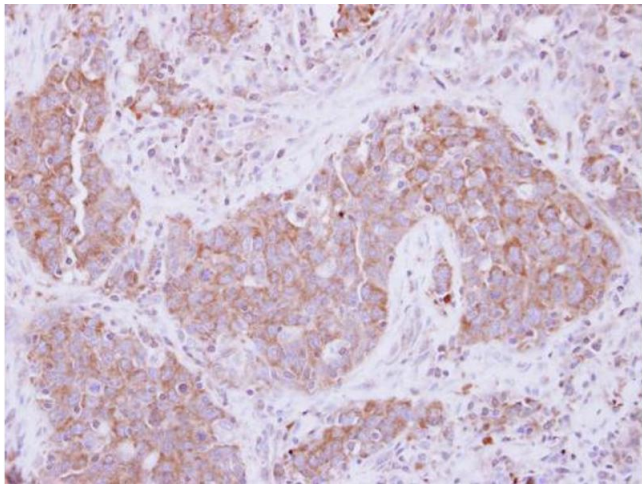
Handling

Format:	Liquid
Concentration:	0.48 mg/mL
Buffer:	0.1M Tris-Glycine (pH 7), 10 % Glycerol, 0.01 % Thimerosal
Preservative:	Thimerosal (Merthiolate)
Precaution of Use:	This product contains Thimerosal (Merthiolate): a POISONOUS AND HAZARDOUS SUBSTANCE which should be handled by trained staff only.
Storage:	4 °C,-20 °C
Storage Comment:	Store as concentrated solution. Centrifuge briefly prior to opening vial. For short-term storage (1-2 weeks), store at 4°C. For long-term storage, aliquot and store at -20°C or below. Avoid multiple freeze-thaw cycles.



Western Blotting

Image 1. WB Image Sample (30 ug of whole cell lysate) A:
THP-1 7.5% SDS PAGE antibody diluted at 1:1000



Immunohistochemistry

Image 2. IHC-P Image Immunohistochemical analysis of
paraffin-embedded human lung Papillary adenocarcinoma,
using ADAM10, antibody at 1:250 dilution.