

Datasheet for ABIN2855999

**anti-RGS2 antibody****3** Images[Go to Product page](#)

## Overview

Quantity:	100 µL
Target:	RGS2
Reactivity:	Human
Host:	Rabbit
Clonality:	Polyclonal
Conjugate:	This RGS2 antibody is un-conjugated
Application:	Western Blotting (WB), Immunofluorescence (IF), Immunohistochemistry (Paraffin-embedded Sections) (IHC (p)), Immunocytochemistry (ICC)

## Product Details

Immunogen:	Recombinant protein encompassing a sequence within the center region of human RGS2. The exact sequence is proprietary.
Isotype:	IgG
Cross-Reactivity:	Human, Mouse, Rat
Characteristics:	Rabbit Polyclonal antibody to RGS2 (regulator of G-protein signaling 2, 24 kDa) RGS2 antibody
Purification:	Purified by antigen-affinity chromatography.

## Target Details

Target:	RGS2
Alternative Name:	regulator of G protein signaling 2 ( <a href="#">RGS2 Products</a> )

## Target Details

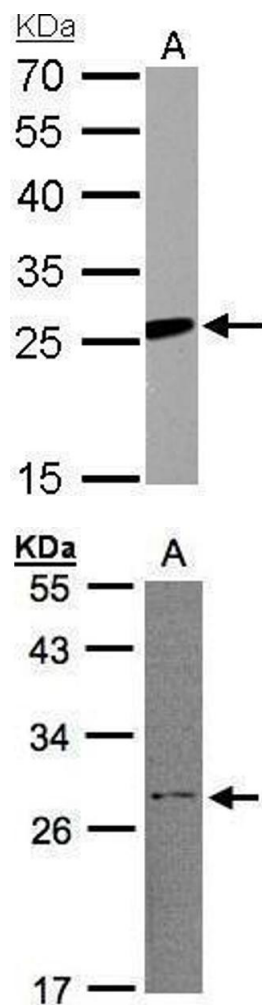
Background:	Regulator of G protein signaling (RGS) family members are regulatory molecules that act as GTPase activating proteins (GAPs) for G alpha subunits of heterotrimeric G proteins. RGS proteins are able to deactivate G protein subunits of the Gi alpha, Go alpha and Gq alpha subtypes. They drive G proteins into their inactive GDP-bound forms. Regulator of G protein signaling 2 belongs to this family. The protein acts as a mediator of myeloid differentiation and may play a role in leukemogenesis.
Molecular Weight:	24 kDa
Gene ID:	5997
UniProt:	<a href="#">P41220</a>
Pathways:	<a href="#">Myometrial Relaxation and Contraction</a> , <a href="#">Regulation of G-Protein Coupled Receptor Protein Signaling</a> , <a href="#">Brown Fat Cell Differentiation</a>

## Application Details

Application Notes:	WB: 1:500-1:3000. ICC/IF: 1:100-1:1000. IHC-P: 1:100-1:1000. Optimal dilutions/concentrations should be determined by the researcher. Not tested in other applications.
Restrictions:	For Research Use only

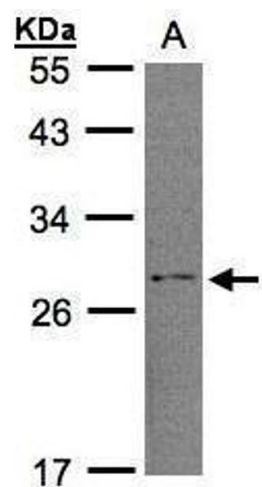
## Handling

Format:	Liquid
Concentration:	1 mg/mL
Buffer:	0.1M Tris-Glycine ( pH 7), 10 % Glycerol, 0.01 % Thimerosal
Preservative:	Thimerosal (Merthiolate)
Precaution of Use:	This product contains Thimerosal (Merthiolate): a POISONOUS AND HAZARDOUS SUBSTANCE which should be handled by trained staff only.
Storage:	4 °C,-20 °C
Storage Comment:	Store as concentrated solution. Centrifuge briefly prior to opening vial. For short-term storage (1-2 weeks), store at 4°C. For long-term storage, aliquot and store at -20°C or below. Avoid multiple freeze-thaw cycles.



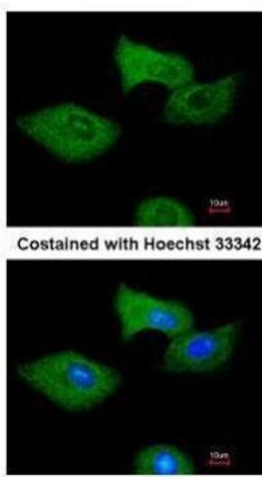
#### Western Blotting

**Image 1.** WB Image RGS2 antibody detects RGS2 protein by Western blot analysis. A. 30  $\mu$ g Neuro2A whole cell lysate/extract 12 % SDS-PAGE RGS2 antibody , dilution: 1:1000



#### Western Blotting

**Image 2.** WB Image Sample (30 $\mu$ g whole cell lysate) A:H1299 12% SDS PAGE antibody diluted at 1:1000



#### Immunofluorescence

**Image 3.** ICC/IF Image Immunofluorescence analysis of methanol-fixed A549, using RGS2, antibody at 1:200 dilution.