

Datasheet for ABIN2856000
anti-PRPF39 antibody



[Go to Product page](#)

3 Images

Overview

Quantity:	100 µL
Target:	PRPF39
Reactivity:	Human
Host:	Rabbit
Clonality:	Polyclonal
Conjugate:	This PRPF39 antibody is un-conjugated
Application:	Western Blotting (WB), Immunohistochemistry (Paraffin-embedded Sections) (IHC (p))

Product Details

Immunogen:	Recombinant protein encompassing a sequence within the center region of human PRPF39. The exact sequence is proprietary.
Isotype:	IgG
Cross-Reactivity:	Human
Characteristics:	Rabbit polyclonal antibody to PRPF39 (PRP39 pre-mRNA processing factor 39 homolog (S. cerevisiae)) PRPF39 antibody [N2C1], Internal
Purification:	Purified by antigen-affinity chromatography.

Target Details

Target:	PRPF39
Alternative Name:	pre-mRNA processing factor 39 (PRPF39 Products)

Target Details

Background: Involved in pre-mRNA splicing.

Cellular Localization: Nucleus

Molecular Weight: 78 kDa

Gene ID: 55015

UniProt: [Q86UA1](#)

Application Details

Application Notes: WB: 1:500-1:10000. IHC-P: 1:100-1:1000. Optimal dilutions/concentrations should be determined by the researcher. Not tested in other applications.

Comment: Positive Control: Raji , human 3xFlag-PRPF39 transfected 293T cells
Validation: Overexpression

Restrictions: For Research Use only

Handling

Format: Liquid

Concentration: 0.67 mg/mL

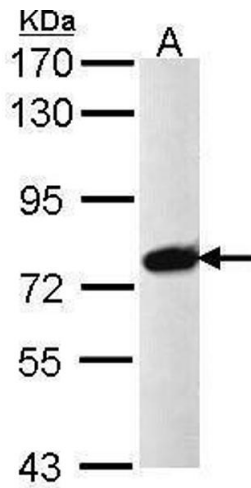
Buffer: 1XPBS (pH 7), 1 % BSA, 20 % Glycerol, 0.01 % Thimerosal

Preservative: Thimerosal (Merthiolate)

Precaution of Use: This product contains Thimerosal (Merthiolate): a POISONOUS AND HAZARDOUS SUBSTANCE which should be handled by trained staff only.

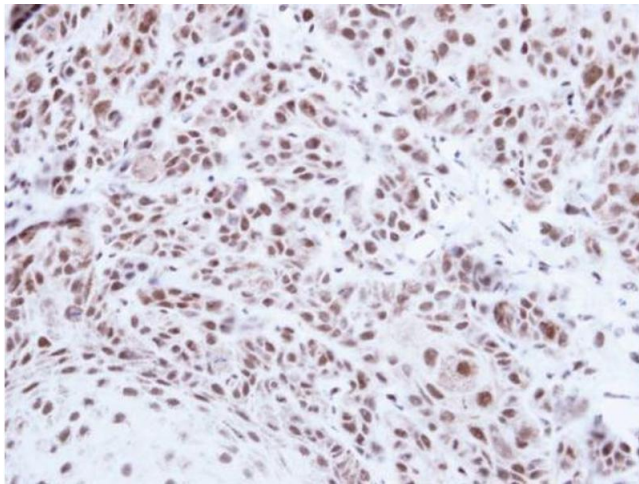
Storage: 4 °C, -20 °C

Storage Comment: Store as concentrated solution. Centrifuge briefly prior to opening vial. For short-term storage (1-2 weeks), store at 4°C. For long-term storage, aliquot and store at -20°C or below. Avoid multiple freeze-thaw cycles.



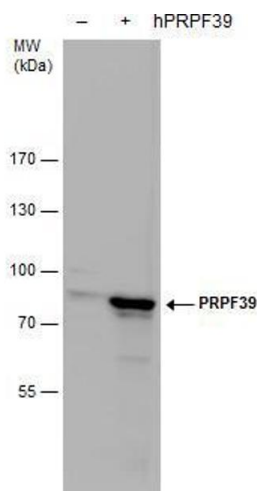
Western Blotting

Image 1. WB Image Sample (30 ug of whole cell lysate) A: Raji 7.5% SDS PAGE antibody diluted at 1:1000



Immunohistochemistry

Image 2. IHC-P Image Immunohistochemical analysis of paraffin-embedded Cal27 xenograft , using PRPF39, antibody at 1:500 dilution.



Western Blotting

Image 3. WB Image PRPF39 antibody detects PRPF39 protein by western blot analysis. Non-transfected (-) and PRPF39-transfected (+, including Flag-tag) 293T whole cell extracts (30 µg) were separated by 7.5% SDS-PAGE, and the membrane was blotted with PRPF39 antibody , diluted by 1:5000.