



Datasheet for ABIN2856001  
**anti-CYP4F12 antibody (Center)**



[Go to Product page](#)

1 Image

Overview

Quantity:	100 µL
Target:	CYP4F12
Binding Specificity:	Center
Reactivity:	Human
Host:	Rabbit
Clonality:	Polyclonal
Conjugate:	This CYP4F12 antibody is un-conjugated
Application:	Western Blotting (WB)

Product Details

Immunogen:	Recombinant protein encompassing a sequence within the center region of human CYP4F12. The exact sequence is proprietary.
Isotype:	IgG
Cross-Reactivity:	Monkey
Cross-Reactivity (Details):	Monkey (94 %)
Characteristics:	Rabbit Polyclonal antibody to CYP4F12 (cytochrome P450, family 4, subfamily F, polypeptide 12) CYP4F12 antibody
Purification:	Purified by antigen-affinity chromatography.

## Target Details

---

Target:	CYP4F12
Alternative Name:	CYP4F12 ( <a href="#">CYP4F12 Products</a> )
Background:	<p>This gene encodes a member of the cytochrome P450 superfamily of enzymes. The cytochrome P450 proteins are monooxygenases which catalyze many reactions involved in drug metabolism and synthesis of cholesterol, steroids and other lipids. This protein likely localizes to the endoplasmic reticulum. When expressed in yeast the enzyme is capable of oxidizing arachidonic acid, however, its physiological function has not been determined. This gene is part of a cluster of cytochrome P450 genes on chromosome 19.</p> <p>Cellular Localization: Endoplasmic reticulum membrane, Multi-pass membrane protein , Microsome membrane, Multi-pass membrane protein , Endoplasmic reticulum membrane , Microsome membrane</p>
Molecular Weight:	60 kDa
Gene ID:	66002
Pathways:	<a href="#">Monocarboxylic Acid Catabolic Process</a>

## Application Details

---

Application Notes:	<p>Suggested dilution Reference Western blot 1:500-1:3000* Not tested in other applications.</p> <p>*Optimal dilutions/concentrations should be determined by the researcher.Suggested dilutionReferenceWestern blot1:500-1:3000*</p>
Comment:	Positive Control: A549 , HepG2
Restrictions:	For Research Use only

## Handling

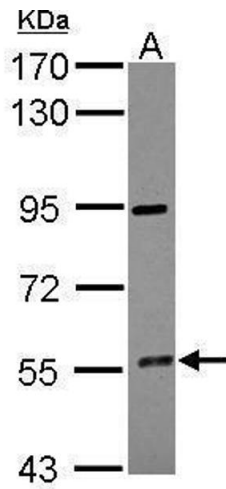
---

Format:	Liquid
Concentration:	1 mg/mL
Buffer:	1XPBS, 1 % BSA, 20 % Glycerol ( pH 7). 0.01 % Thimerosal was added as a preservative.
Preservative:	Thimerosal (Merthiolate)
Precaution of Use:	This product contains Thimerosal (Merthiolate): a POISONOUS AND HAZARDOUS SUBSTANCE which should be handled by trained staff only.
Storage:	-20 °C

## Handling

Storage Comment: Keep as concentrated solution. Aliquot and store at -20°C or below. Avoid multiple freeze-thaw cycles.

## Images



### Western Blotting

**Image 1.** WB Image Sample (30 ug of whole cell lysate) A:  
HepG2 7.5% SDS PAGE antibody diluted at 1:500